

PHILIPS

Hairdryer

ThermoProtect Ionic

2200W

ThermoProtect setting
with massaging volume diffuser
Ionic Care



HP8233/03

Fast dry at a lower temperature with
ThermoProtect
with massaging diffuser & 11mm styling nozzle.

Protect your hair while enjoying fast drying results. This hair dryer has multiple speed and temperature settings. Features include ThermoProtect for fast drying at a constant caring temperature, Ionic Care & TurboBoost.

Easy to use

- Elegant, feminine design emphasising performance and quality
- 1.8 m power cord
- Easy storage hook for convenient storage
- Removeable air flow filter makes cleaning quick and easy

Beautifully styled hair

- Professional 2200W for perfect salon results
- Ultra slim styling nozzle of 11mm for precision styling
- Maximizes volume & boosts curls while gently massaging scalp
- Turbo boost for extra fast drying
- Six flexible speed and temperature settings for full control
- Cool Shot sets your style

Less Hair Damage

- ThermoProtect temperature setting
- Ionic conditioning for shiny, frizz-free hair

Highlights

Premium Design



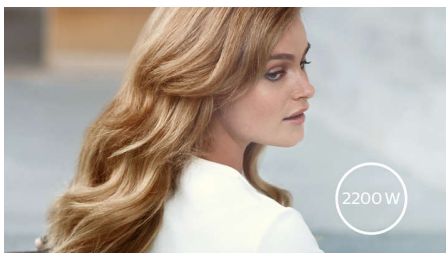
This hairdryer embodies a modern, sophisticated approach to design. Soft, fluid contours and elongated proportions subtly communicate femininity while precision detailing and high quality materials and finishes are evidence of the product's superior performance.

ThermoProtect temperature



The ThermoProtect temperature provides the optimal drying temperature and gives additional protection from overheating the hair. With the same powerful airflow, you will get the best results in a caring way.

Professional 2200W



This 2200W professional hairdryer creates a powerful airflow. The resulting combination of power and speed makes drying and styling your hair quicker and easier.

Ionic conditioning



Give your hair instant care with ionic conditioning. Charged negative ions eliminate static, condition your hair, and smooth the hair cuticles to intensify hair's shine and glossiness. The result is smooth and frizz-free hair with beautiful shine.

Speed and temperature settings



The speed and heat required can be easily adjusted to create the perfect style. Six different settings ensure full control for precise and tailored styling.

Ultra slim styling 11mm nozzle



The ultra thin styling nozzle concentrates the flow of hair through the 11mm nozzle for precision styling on specific areas. Great for touch ups or to set your style.

Turbo boost



The turbo boost button increases the airflow, to dry your hair even quicker.

Asymmetric massaging diffuser



The asymmetric massaging diffuser has a unique asymmetric design that is contoured to the head, making it easier and more intuitive to use. The diffuser spreads the flow of air across the hair, drying hair more healthy, boosting volume and reducing frizz while the addition of massage helps stimulate the scalp and improve hair vitality. For best results, hold close to the crown and root area and let the diffuser's massaging textured pins encourage volume, add bounce and shape curls.

Cool Shot



A must-have professional function for hair stylists. The Cool Shot button provides an intense burst of cold air. It is used after styling to finish and set the style.

Specifications

Technical specifications

Cord length: 1.8 m

Voltage: 220-240 V

Power: 2200 W

Color/finishing: Glossy Black & Purple gradient

Frequency: 50-60 Hz

Wattage: 2200 W

Motor: DC Motor

Housing material: PC

Features

Ceramic coating: Ceramic Element

Foldable handle: No

Cool shot

Diffuser: Massaging volume diffuser

Dual voltage: No

Travel pouch: No

Hanging loop

Ion conditioning

Number of attachments: 2

Nozzle / Concentrator: Ultra slim styling 11mm nozzle

Turbo Boost

Weight & dimensions

A-Box Dimensions: Length = 63cm,

Width = 35cm, Height = 25cm

A-Box Weight: 6.3kg

F-Box Dimensions: Depth = 11cm,

Height = 23cm, Width = 31cm

Product size: Width = 22cm, Height = 31cm,

Length = 10cm

Product weight (excl. pack): 0.6kg

F-Box weight: 1kg

Service

2-year guarantee

Consumer Trade Item

Height: 23

Width: 31

Length: 11

Net Weight: 0.682

Gross Weight: 0.915

GTIN: 08710103619642

Country of origin: CN

Harmonized system code: 85163100

Outer Carton

Height: 24.8

Width: 34

Length: 63.5

Net Weight: 4.092

Gross Weight: 5.96

GTIN: 18710103619649

