



EN User manual  
ZH-HK 用戶手冊

**PHILIPS**



2014 © WOOX Innovations Limited.  
All rights reserved.

This product was brought to the market by WOOX Innovations Limited or one of its affiliates, further referred to in this document as WOOX Innovations, and is the manufacturer of the product. WOOX Innovations is the warrantor in relation to the product with which this booklet was packaged. Philips and the Philips Shield Emblem are registered trademarks of Koninklijke Philips N.V.

AJ3400\_05\_UM\_V3.0

**EN**

## 1 Important

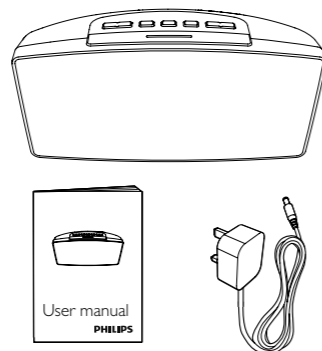
- Read these instructions.
- Heed all warnings.
- Follow all instructions.
- Do not block any ventilation openings. Install in accordance with the manufacturer's instructions.
- Do not install near any heat sources such as radiators, heat registers, stoves, or other apparatus (including amplifiers) that produce heat.
- Protect the power cord from being walked on or pinched, particularly at plugs, convenience receptacles, and the point where they exit from the clock radio.
- Only use attachments/accessories specified by the manufacturer.
- Unplug this clock radio during lightning storms or when unused for long periods of time.
- Refer all servicing to qualified service personnel. Servicing is required when the clock radio has been damaged in any way, such as power-supply cord or plug is damaged, liquid has been spilled or objects have fallen into the clock radio, the clock radio has been exposed to rain or moisture, does not operate normally, or has been dropped.
- Battery usage **CAUTION** – To prevent battery leakage which may result in bodily injury, property damage, or damage to the clock radio:
  - Install the battery correctly, + and - as marked on the clock radio.
  - Remove the battery when the clock radio is not used for a long time.
  - The battery shall not be exposed to excessive heat such as sunshine, fire or the like.
- This clock radio shall not be exposed to dripping or splashing.

- Do not place any sources of danger on the clock radio (e.g. liquid filled objects, lighted candles).
- Where the plug of the Direct Plug-in Adapter is used as the disconnect device, the disconnect device shall remain readily operable.

## 2 Your clock radio

Congratulations on your purchase, and welcome to Philips! To fully benefit from the support that Philips offers, register your product at www.philips.com/welcome.

### What's in the box



## 3 Get started

Always follow the instructions in this chapter in sequence.

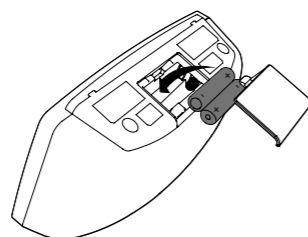
### Install battery

If there is power interruption, the clock memory backup allows your alarm and clock settings to be stored for up to a day. The display backlight will be off.

#### Caution

- Risk of explosion! Keep the battery away from heat, sunshine or fire. Never discard battery in fire.
- The battery contains chemical substances, so it should be disposed of properly.

Insert 2 x 1.5V AAA battery (not supplied) with correct polarity (+/-) as illustrated.



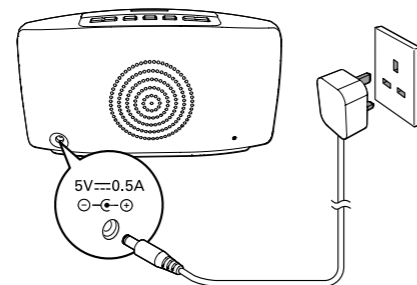
### Connect power

#### Caution

- Risk of product damage! Make sure that the power voltage corresponds to the voltage printed on the back or underside of the clock radio.
- Risk of electric shock! When you unplug the power adapter, always pull the plug from the socket. Never pull the cord.

#### Note

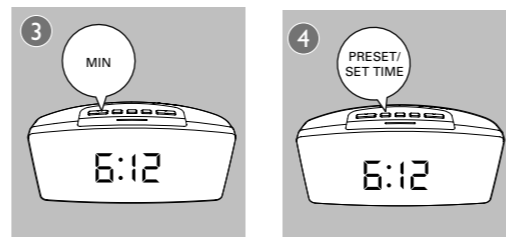
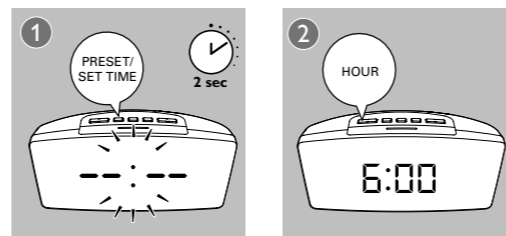
- The type plate is located at the bottom of the clock radio.



### Set time

#### Note

- You can only set time in standby mode.

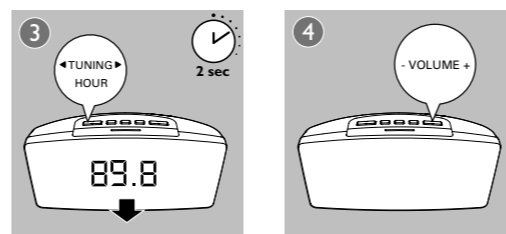
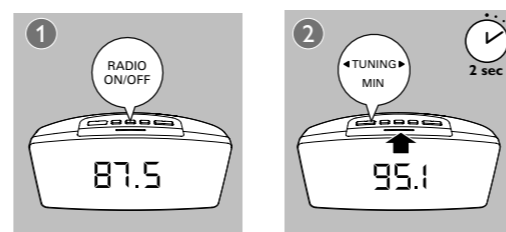


## 4 Listen to FM radio

#### Note

- Keep the clock radio away from other electronic devices to avoid radio interference.
- For better reception, fully extend and adjust the position of the FM antenna.

### Tune to FM radio stations



### Store FM radio stations manually

You can store up to 10 FM radio stations.

- 1 Tune to an FM radio station.
- 2 Press and hold **PRESET** for two seconds.
  - ↳ The preset number begins to blink.
- 3 Press **TUNING** repeatedly to select a number.
- 4 Press **PRESET** again to confirm.
- 5 Repeat steps 1 to 4 to store other stations.

#### Tip

- To remove a pre-stored station, store another station in its place.

### Select a preset radio station

In tuner mode, press **PRESET** repeatedly to select a preset number.

### Adjust volume

While listening, press **- VOLUME +** to adjust volume.
 

- ↳ The volume level (1~15) shows in the display.

## 5 Other features

### Set alarm timer

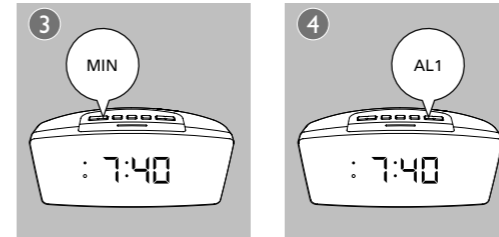
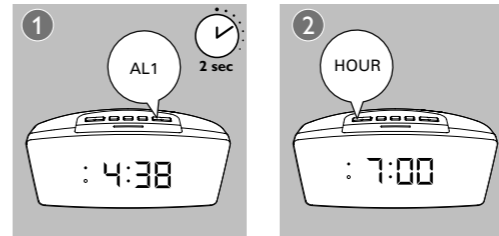
#### Set alarm

#### Note

- You can only set the alarm in standby mode.
- When alarm sounds, volume rises gradually. You cannot adjust the alarm volume manually.
- Make sure that you have set the clock correctly.

Follow the illustration to set the first alarm.

- **AL1**: set the first alarm.
- **AL2**: set the second alarm.



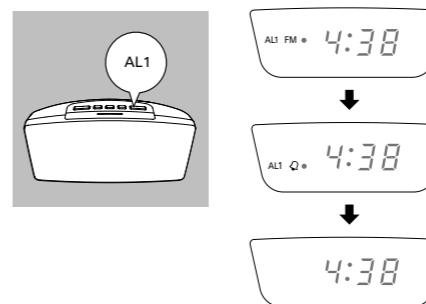
#### Tip

- The clock radio exits alarm setting mode when being idle for 10 seconds.

### Select alarm source

You can select FM radio or buzzer as the alarm source.

- ↳ The corresponding alarm icon lights up.
- The **AL2** setting is the same as **AL1**.



### Activate/deactivate alarm timer

Press **AL1** or **AL2** repeatedly to activate or deactivate the alarm timer.

- ↳ If the alarm timer is deactivated, the alarm indicator turns off.
- ↳ The alarm repeats ringing for the next day.

### Snooze alarm

When alarm sounds, press **SNOOZE**.

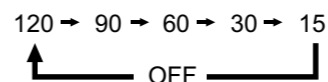
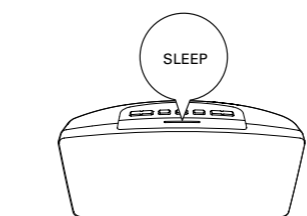
- ↳ The alarm snoozes and repeats ringing nine minutes later.

### Set sleep timer

This clock radio can switch to standby mode automatically after a preset period.

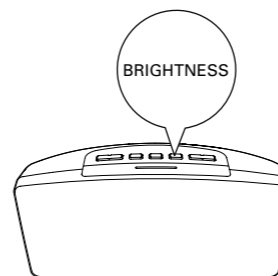
**To deactivate the sleep timer:**

- Press **SLEEP** repeatedly until **[OFF]** appears.



### Adjust brightness

Press **BRIGHTNESS** repeatedly to adjust display brightness.



## 6 Product information

#### Note

- Product information is subject to change without prior notice.

### Specifications

#### Amplifier

Total Output Power 0.4W RMS

#### Tuner (FM)

Tuning range 87.5-108 MHz

Tuning grid 50 KHz

Sensitivity  
- Mono, 26 dB S/N Ratio <22 dBf  
- Stereo, 46 dB S/N Ratio <49.5 dBf

Total Harmonic Distortion <2%

Signal to Noise Ratio >50 dBA

### General information

AC power (power adapter) Brand name: Philips;  
Model: AS030-050-EI050;  
Input: 100-240 V~, 50/60 Hz;  
0.15 A;  
Output: 5.0V = 0.5 A

Operation Power Consumption 1.2 W

Standby Power Consumption <1 W

Dimensions:  
Main Unit (W x H x D) 191 x 104 x 69 mm

Weight: -Main Unit 0.33 kg

## 7 Troubleshooting

#### Warning

- Never remove the casing of this apparatus.

To keep the warranty valid, never try to repair the system yourself. If you encounter problems when using this apparatus, check the following points before requesting service. If the problem remains unsolved, go to the Philips web site (www.philips.com/welcome). When you contact Philips, ensure that the apparatus is nearby and the model number and serial number are available.

#### No power

- Ensure that the AC power plug of the unit is connected properly.
- Ensure that there is power at the AC outlet.

#### No sound

- Adjust the volume.

#### No response from the unit

- Disconnect and reconnect the AC power plug, then turn on the unit again.

#### Poor radio reception

- Increase the distance between the unit and your TV or VCR.
- Fully extend the FM antenna.

#### Alarm does not work

- Set the clock/alarm correctly.

#### Clock/alarm setting erased

- Power has been interrupted or the power plug has been disconnected.
- Reset the clock/alarm.

## 8 Notice

Any changes or modifications made to this device that are not expressly approved by WOOX Innovations may void the user's authority to operate the equipment.



This product complies with the radio interference requirements of the European Community.

### Disposal of your old product



Your product is designed and manufactured with high quality materials and components, which can be recycled and reused.



This symbol on a product means that the product is covered by European Directive 2012/19/EU. Inform yourself about the local separate collection system for electrical and electronic products. Follow local rules and never dispose of the product with normal household waste. Correct disposal of old products helps prevent negative consequences for the environment and human health.



## Environmental information

All unnecessary packaging has been omitted. We have tried to make the packaging easy to separate into three materials: cardboard (box), polystyrene foam (buffer) and polyethylene (bags, protective foam sheet). Your system consists of materials which can be recycled and reused if disassembled by a specialized company. Please observe the local regulations regarding the disposal of packaging materials, exhausted batteries and old equipment.

## ZH-HK

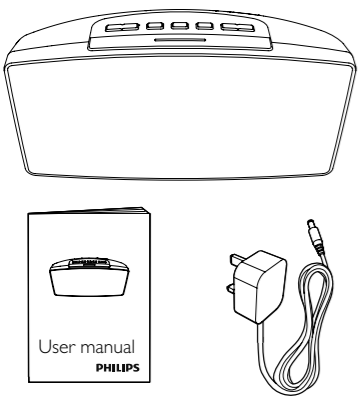
### 1 重要資訊

- 閱讀這些指示。
- 留意所有警告。
- 遵循所有指示。
- 不要阻塞任何通風口。根據製造商說明，安裝設備。
- 不要在任何熱源附近安裝此設備，如發射裝置、熱記錄器、火爐或其他發熱設備（包括放大器）。
- 電源線不可被人踐踩或夾緊，尤其在插頭處、電源插座和接入鬧鐘收音機的位置。
- 僅使用製造商指定的附件/配件。
- 雷電天氣或長時間不使用時，請拔除此鬧鐘收音機的插頭。
- 諮詢所有合格維修服務人員。鬧鐘收音機一旦出現任何形式的損壞，都需要進行維修，如電源線或插頭損壞，液體濺灑至鬧鐘收音機中或物體落入設備，鬧鐘收音機置於雨水或潮濕環境，無法正常運作或墜落受損。
- 電池使用注意事項 – 為避免由於電池漏電而造成身體受傷、財產損失或鬧鐘收音機損壞：
  - 請按照鬧鐘收音機上標示的 + 和 - 位置，以正確的方式安裝電池。
  - 如果長時間不使用鬧鐘收音機，請取出電池。
  - 電池不可暴露於過熱的環境中，例如陽光下、火源或類似場所。
- 鬧鐘收音機不可暴露於滴水或濺水環境下。
- 不可將任何危險源置於鬧鐘收音機上（如盛滿液體的物件和點燃的蠟燭）。
- 如果將直接插入式適配器的插頭用作中斷連接裝置，則該中斷連接裝置仍可隨時進行操作。

### 2 您的時鐘收音機

感謝您購買 Philips 產品，歡迎來到 Philips 世界！要享受 Philips 為您提供的全面支援，請在以下網站 [www.philips.com/welcome](http://www.philips.com/welcome) 註冊您的產品。

#### 包裝盒內含物件



### 3 使用入門

請務必依順序遵循本章指示。

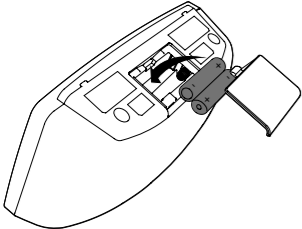
#### 安裝電池

如果電力中斷，鬧鐘記憶備份可讓您還原最多一天的響鬧與時鐘設定。顯示背光會熄滅。

## ！ 注意

- 存在爆炸的危險！保持電池遠離熱源、陽光或火源。切勿將電池丟棄在火中。
- 電池含有化學物質，因此應正確地廢棄。

請按照指示，根據極性 (+/-) 正確插入 2 枚 1.5V AAA 電池（不隨附）。



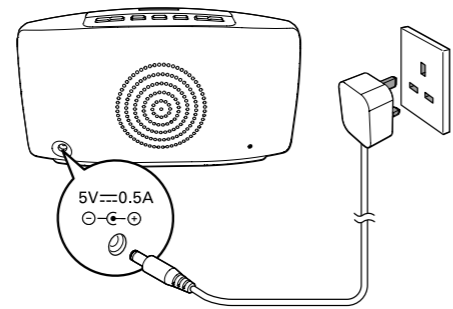
#### 連接電源

## ！ 注意

- 存在損壞產品的風險！確保電源電壓與鬧鐘收音機背面或下方列印的電壓吻合。
- 有觸電危險。拔除電源變壓器時，請務必將插頭從插座拔下。請勿拉扯電源線。

## ≡ 提示

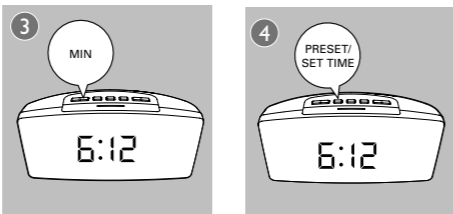
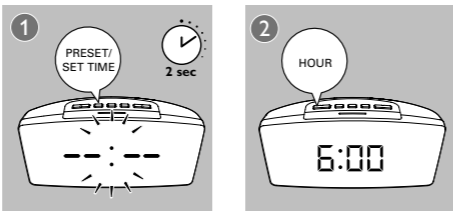
- 字模板位於鬧鐘收音機的底部。



#### 設定時間

## ≡ 提示

- 只有在待機模式中才能設定時間。

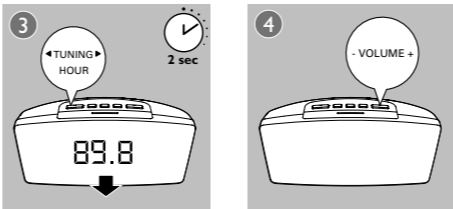
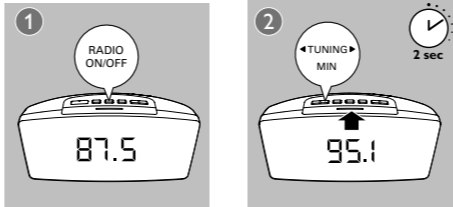


### 4 收聽 FM 收音機

## ≡ 提示

- 保持鬧鐘收音機始終遠離其他電子設備，以避免造成干擾。
- 要取得更好的接收效果，請完全展開 FM 天線並調節其位置。

#### 調諧至 FM 電台



#### 手動儲存收音機電台

您可以儲存多達 10 個 FM 電台。

- 調至 FM 電台。
- 按住 PRESET 兩秒。
  - 預設號碼會開始閃動。
- 重複按 ◀ TUNING 即可選擇號碼。
- 再次按 PRESET 以確認。
- 重複步驟 1 至 4 可儲存其他電台。

## ✳ 貼士

- 如要移除預設電台，在該位置儲存另一個電台即可。

#### 選取預設電台

在調諧器模式，重複按 PRESET 即可選擇預設號碼。

#### 調節音量

聆聽時，按 - VOLUME + 即可調節音量。

- 音量等級 (1~15) 會顯示在顯示屏上。

### 5 其他功能

#### 設定定時響鬧

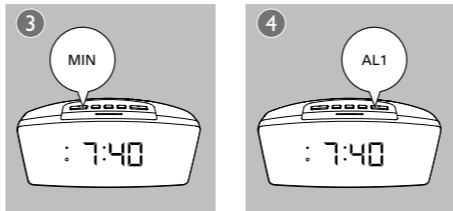
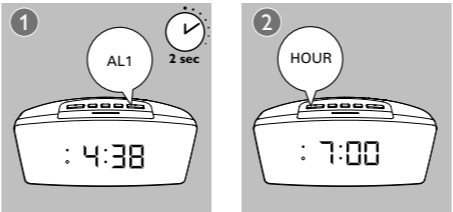
#### 設定響鬧

## ≡ 提示

- 只有在待機模式中才能設定響鬧。
- 響鬧響起時，音量會逐漸提高。您無法手動調節響鬧音量。
- 請確保您已正確設定時鐘。

請按照圖示設定第一個響鬧。

- AL1：設定第一個響鬧。
- AL2：設定第二個響鬧。



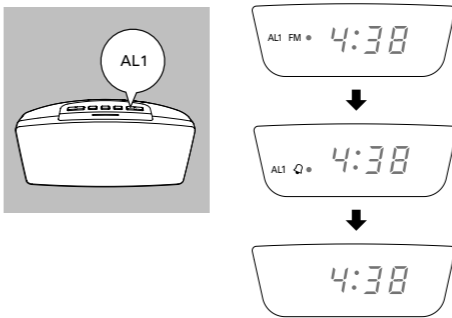
## ✳ 貼士

- 閒置 10 秒後鬧鐘收音機就會退出響鬧設定模式。

#### 選擇響鬧源

您可以選擇 FM 收音機或蜂鳴作為響鬧來源。

- 對應的響鬧圖示就會亮起。
- 鬧鐘收音機的 AL2 設定與 AL1 相同。



#### 啟用 / 停用定時響鬧

重覆按 AL1 或 AL2 即可啟用或停用定時響鬧。

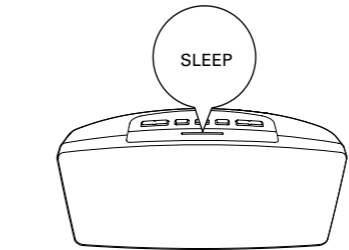
- 如果定時響鬧已經停用，響鬧指示燈就會熄滅。
- 響鬧會在下一天重覆響啼。

#### 小睡響鬧

響鬧響起時，按 SNOOZE。

- 響鬧會暫停並於九分鐘後再度響起。

#### 設定定時睡眠功能



120 → 90 → 60 → 30 → 15



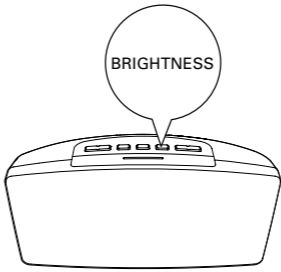
本產品可在預設的一定時間過後自動切換至待機模式。

停用睡眠計時器：

- 重複按 SLEEP，直到 [OFF]（關閉）顯示為止。

#### 調整亮度

重複按 BRIGHTNESS 即可調整顯示亮度。



### 6 產品資訊

## ≡ 提示

- 產品資訊可能會被修改，恕不另行通知。

#### 規格

##### 擴大機

總輸出功率 0.4 瓦 RMS

##### 調諧器 (FM)

調頻範圍 87.5-108 MHz

調頻柵極 50 kHz

敏感度 單聲道，26 dB S/N 比率 <22 dBf

立體聲，46 dB S/N 比率 <49.5 dBf

總諧波失真 < 2%

訊噪比 >50 dBA

#### 一般資料

交流電源（電源變壓器） 品牌名稱：Philips；  
型號：AS030-050-EI050；  
輸入：100-240V~，50/60 Hz；  
輸出：5.0V === 0.5 A

工作消耗功率 1.2 瓦

備用模式消耗功率 <1 瓦

尺寸： 191 x 104 x 69 毫米

主裝置（寬 x 高 x 厚）

重量： - 主裝置 0.33 千克

### 7 疑難排解

## ！ 警告

- 請勿拆開設備外殼。

為保證保固的有效性，請勿自行嘗試修理系統。如果您在使用本設備時碰到任何問題，請在送修前先行檢查下列事項。如果問題仍未解決，請造訪 Philips 網站 ([www.philips.com/welcome](http://www.philips.com/welcome))。與 Philips 聯絡時，請先準備好您的產品、型號與序號。

沒有電力

- 確保將插頭正確插入交流電源。
- 確保交流電源插座已通電。

沒有聲音

- 調節音量。

裝置無響應

- 斷開電源連接，然後重新連接電源，並再次打開裝置。

收音機訊號接收不良

- 將裝置遠離電視或 VCR。

- 完全展開 FM 天線。

響鬧未能運作

- 請正確設定時鐘 / 響鬧。

時鐘 / 響鬧設定被刪除

- 電源受到阻礙或電源插頭被拔去。

- 重設時鐘 / 響鬧。

### 8 注意

未經 WOOX Innovations 明確允許而對裝置進行的任何變更或修改可能會導致用戶喪失使用設備的權限。



此產品符合歐盟無線電干擾之要求。

#### 處理廢棄產品



用以設計和製造產品的高品質材料和元件可供回收並重複使用。



產品上有此符號時，代表產品適用歐洲指令 (European Directive) 2012/19/EU。請取得當地電子與電器產品分類收集系統的相關資訊。請根據當地法規處理，切勿將產品與一般家用廢棄物一併丟棄。正確處理廢棄產品有助於避免對環境和人類健康帶來負面影響。

#### 環境資訊

所有不必要的包裝已不作考慮。我們已嘗試使包裝材料輕鬆分離成三種材料：紙板（紙箱）、泡沫塑料（緩衝器）和聚乙烯（包、保護性泡沫塑料板。）

如果由專門公司拆卸，您的系統由可循環再利用的材料組成。請遵循有關於處理包裝材料、廢棄電池和舊裝置的當地法規。

#### 低功率電波輻射性電機管理辦法

第十二條 經型式認證合格之低功率射頻電機，非經許可，公司、商號或

使用者均不得擅自變更頻率、加大功率或變更原設計之特性及

功能。

第十四條 低功率射頻電機之使用不得影響飛航安全及干擾合法通信；經

發現有干擾現象時，應立即停用，並改善至無干擾時方得繼續

使用。