

Philips
Luceo design cordless
phone

30 min answering machine
1.8" display/ white backlight
Handset speakerphone

M6651CWR



It's your call

Limited edition

Iconic in every way, the Philips Luceo cordless phone conveys sensual lines in a modern design that seamlessly melds with its integrated secondary base display. Precision styling and functions make Luceo a welcome masterpiece in any home.

Exquisite design with high quality execution

- Secondary display on the base shows caller ID and clock
- Guiding side walls on the base ensure secure docking
- Calibrated keys for precise dialing
- Charge handset either way around
- Smart cable management maintains visual appeal at all angles

Ultimate calling experience

- High contrast 4.6cm (1.8") white on black graphical display
- HQ-Sound: high quality acoustic engineering for superb sound
- Handset speakerphone allows you to talk handsfree
- Three-field entries for assigning 3 numbers to one contact
- Privacy settings: call block, silence mode, call barring
- Up to 30 minutes of messages on your answering machine

Eco-conscious product

- Zero power emission when ECO+ mode is activated

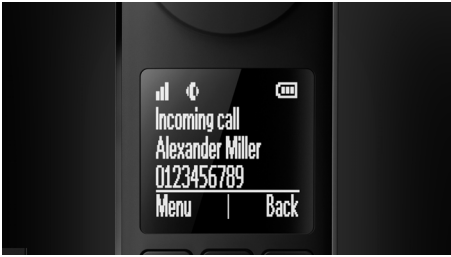
PHILIPS

Luceo design cordless phone
30 min answering machine 1.8" display/ white backlight, Handset speakerphone

M6651CWR/FR

Highlights

4.6cm (1.8") graphical display



A high contrast, white-on-black reverse LCD display ensures easy reading and also melds perfectly with the Philips Luceo's overall sleek design language.

Calibrated keypad



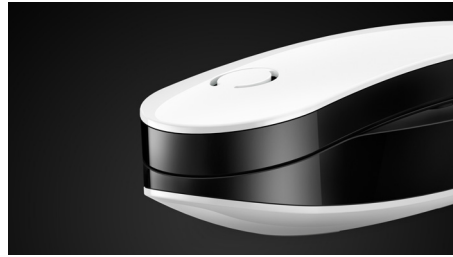
The calibrated and carefully designed keypad ensures precise dialing where you clearly feel every keystroke whether you are dialing a number or entering a phonebook contact. Materials and key structures have undergone extensive user tests to find a perfect balance between pressing force and key response.

ECO+ mode



Philips phones are energy efficient and designed to be respectful to the environment. When ECO mode is activated the emitted radiation is reduced by up to 60%, and up to 95% when the phone is charging. With ECO+ mode activation the radiation drops to zero.

Handset speakerphone



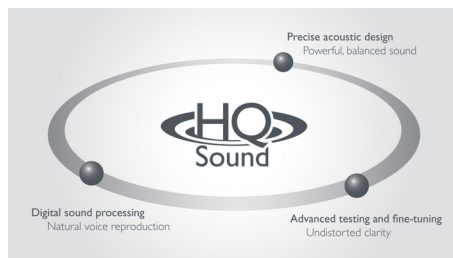
Handsfree mode uses a built-in loud speaker to amplify the voice of the caller, allowing you to speak and listen during a call without holding the phone to your ear. This is especially useful if you want to share the call with others or simply multitask.

Hassle-free charging



For reliability and convenience the handset can be charged in both directions of the docking station.

HQ-Sound



HQ-Sound: high quality acoustic engineering for superb sound reproduction. We build upon decades of experience and breakthrough innovations in developing Hi-Fi audio products and high-end headphones to deliver excellent voice clarity on our DECT phones. When it comes to improving sound quality, our acoustics engineers and architects have

thought of everything – high quality components, digital signal processing, precise acoustic design, advanced testing and fine-tuning. The result is sound that is crisp, clear and authentic. Sound so good and natural, it is almost like being there in person.

Multiple privacy settings



Black list restricts receiving calls from specific numbers or starting with certain digits, keeping you away from unwanted calls. You can block 4 sets of numbers. Each set of numbers can consist between 1 to 24 digits. When there is an incoming call that starts with one of these numbers or being one of 4 exact Caller numbers, the phone will not ring. With silence mode you can disable the ringtones for specific times to enjoy peace and silence. Thanks to Call barring you can avoid expensive phone bill surprises by blocking calls to specific numbers starting with certain digits.

Secondary display on the base



The Philips Luceo's high contrast white-on-black display seamlessly and stylishly integrates with its base. The display shows the caller ID when there is an incoming call and the time when in idle mode. You can choose to turn off the base display – so as not to be disturbed by any light – at any time.

Specifications

Accessories

- Exchangable handset covers: 2

Sound

- Sound Profile: MySound
- Volume control on handset
- Ringtones on handset: 10 polyphonic
- HQ-Sound

Picture/Display

- Backlight: Yes
- Backlight color: White
- Handset display size: 4.6cm / 1.8"
- Handset display type: Reversed dot matrix
- Base display size: 7.0cm / 2.77"
- Base display type: Reversed dot matrix

Answering Machine

- Recording time capacity: Up to 30 minutes
- Pre-recorded OGM
- Answering machine control: From handset only

Convenience

- Menu structure in the handset: List menu
- Speakerphone - talk handsfree
- Personalization: Silent mode
- Call barring: Restrict the phone from making specific outgoing calls
- Block callers/ Blacklist*: Restrict the phone from ringing on specific incoming numbers
- Signal strength indicator: 3-bar indicator
- Battery level indicator: 3-bar battery icon
- Date / Time display
- Alarm Clock
- Programmable hot keys: Key 1
- Call Management: Call Waiting*, Caller ID*, Microphone mute, Missed Calls, Received Calls, Dialed calls
- Keypad lock
- Key tone on/off
- Auto hang up
- Multi handset capability: Up to 4
- Number of keys: 20
- Backlit keypad: White
- Illuminated keypad
- Enlarge dialing digit
- Base Station keys: Paging key

- Up to 16 hrs talk time
- Up to 250 hrs standby time
- Charge time: 8 hours
- Line cord length: 1.8m
- Power cord length: 1.8m
- Range: Open field <300m; indoor <50m
- Family Notes
- Event notifications: For missed calls and answering machine messages

Memory Capacity

- Phonebook: 100 names and numbers
- Redial List Capacity: 20 last numbers
- Call log entries: 50 entries
- Phonebook store in the base
- Multiple phonebook entries: Up to 3 numbers

Power

- Battery capacity: 550 mAh
- Battery type: AAA NiMH Rechargeable
- Mains power: AC 100-240V ~50/60Hz
- Power Consumption: <0.65W (display off), <1.4W (display on)

Security

- Transmission encryption : Yes

Network Features

- Compatible: GAP

SAR Value

- Philips handsets: <0.1 W/kg

Eco Design

- EcoMode: Automatic & manual
- Eco+

Packaging dimensions

- EAN: 48 95185 61278 2
- Packaging dimensions (W x H x D): 31.8 x 9.5 x 8.1 cm
- Gross weight: 0.6525 kg
- Nett weight: 0.478 kg
- Number of products included: 1
- Packaging type: Carton
- Tare weight: 0.1745 kg
- Type of shelf placement: Laying



Issue date 2015-09-04

Version: 1.1.3

12 NC: 8670 001 27817
EAN: 48 95185 61278 2

© 2015 Koninklijke Philips N.V.
All Rights reserved.

Specifications are subject to change without notice.
Trademarks are the property of Koninklijke Philips N.V.
or their respective owners.

www.philips.com

**This feature requires additional subscription of Caller ID service.
Please check with your local network operator for details.