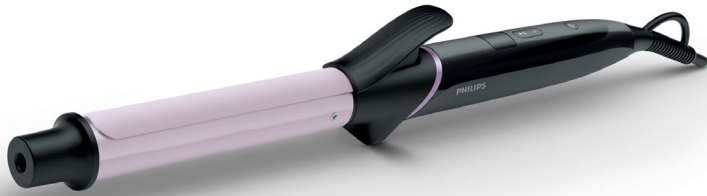


Philips StyleCare
Curler

25mm medium barrel
Tourmaline ceramic
Digital temperature settings



BHB864/00



One wrap away from perfect curls

Easily create perfect, classic curls with our new curler. Tourmaline ceramic coated barrel makes sure your hair is protected, frizz-free and shine with perfection. 200°C high heat allows you to create beautiful curls in one wrap.

Beautifully styled hair

- Tourmaline ceramic for ultimate smoothness and shine
- Up to 200°C for perfect results
- 25mm medium barrel for classic curls

Less hair damage

- 8 digital temperature settings for absolute control

Ease of use

- 30% more styling space on the barrel for long or thick hair
- Cool tip for easier and safer use
- Safety stand for ease of use
- Fast heat up time, ready to use in 60 sec
- Key-lock function to avoid unintentional switching
- Swivel cord to prevent tangled wires
- Auto shut-off for safe usage
- 1.8 m power cord

PHILIPS

Highlights

Tourmaline ceramic



The smooth ceramic barrel prevents damage to your hair during styling. It is infused with tourmaline to give your curls ultimate smoothness and shine.

Digital temperature settings

Digital display with 8 temperature settings gives you absolute control to adjust temperature to your hair type for damage prevention.

Up to 200°C



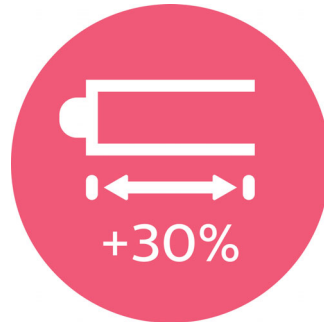
High temperature enables you to change the shape of your hair and get the curly look you want.

25mm medium barrel



25mm medium barrel for classic curls

30% more styling space



Increased styling space on the barrel for easier curling even long or thick hair.

Cool tip



The tip of the styler is made from a special heat insulating material to keep it cool; you can safely hold it while you're styling for optimal ease of use.

Safety stand



The safety stand enables you to put the curler down safely during use

Fast heat up time



This styler has a fast heat up time, being ready to use in 60 seconds.

Key-lock function



You are always in control. No more accidental temperature change with the key-lock function.

Swivel cord



Useful swivel cord technology rotates the cord to prevent tangled wires.

Specifications

Technical specifications

- Barrel size: 25mm
- Barrel coating: Tourmaline Ceramic
- Temperature range: 130 °C - 200 °C
- Number of heat settings: 8
- Type of temperature control: LCD
- Heat-up time: 60 sec
- Cord length: 1.8 m
- Voltage: Worldwide V

Features

- Auto shut-off: after 60 min
- Key lock
- Resting stand
- Swivel cord

Service

- 2-year worldwide guarantee



Issue date 2016-12-27

Version: 1.2.1

© 2016 Koninklijke Philips N.V.
All Rights reserved.

Specifications are subject to change without notice.
Trademarks are the property of Koninklijke Philips N.V.
or their respective owners.

www.philips.com