



LED-backlit LCD monitor with SmartImage

- S Line
- 27" (68.6 cm)
- Quad HD (2560 x 1440)

272S4LPJCB/00

Essential features, efficient performance

for maximum productivity

The Philips LED display using 25% recycled materials and PVC, BFR free housing is ideal for eco-friendly productivity

Benefits

Great performance

- Crystal clear images with Quad HD 2560 x 1440 pixels
- Less eye fatigue with Flicker-Free technology
- MultiView enables active dual connect and view at the same time
- SmartImage pre-sets for easy optimised image settings

Designed for people

- SmartErgoBase enables user-friendly ergonomic adjustments
- Built-in stereo speakers for multimedia

Features

CrystalClear images

These latest Philips screens deliver CrystalClear, Quad HD 2560x1440 or 2560x1080 pixel images. Utilising high-performance panels with a high-density pixel count, enabled by high-bandwidth sources like DisplayPort, HDMI, Dual link DVI, these new displays will make your images and graphics come alive. Whether you are a demanding professional requiring extremely detailed

- SmartConnect with HDMI, MHL, DisplayPort, DVI and VGA
- MHL technology for enjoying mobile content on a big screen
- Low bezel-to-table height for maximum reading comfort

Sustainable Eco-design

- LED Technology ensures low power and natural colours
- PowerSensor saves up to 80% energy costs

information for CAD-CAM solutions, using 3D graphic applications or a financial wizard working on huge spreadsheets, Philips displays will give you CrystalClear images.

PHILIPS

Flicker-Free technology

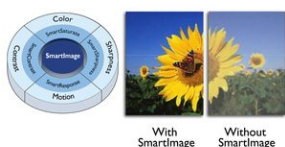


Due to the way brightness is controlled on LED-backlit screens, some users experience flicker on their screen which causes eye fatigue. Philips Flicker-Free technology applies a new solution to regulate brightness and reduce flicker for more comfortable viewing.

MultiView technology

With the ultra-high resolution Philips MultiView display you can now experience a world of connectivity in comfort whether at the office or at home. MultiView enables active dual connect and view so that you can work with multiple devices like a PC and Notebook side-by-side simultaneously, making complex multi-tasking work a breeze. Watching live football feeds from your set-top box on the right-hand side, while browsing the Internet from your notebook on the left is now easy. You may want to keep an eye on the live news feed with audio in the small window, while working on your latest blog.

SmartImage



SmartImage is an exclusive leading edge Philips technology that analyses the content displayed on your screen and optimises your display performance. This user-friendly interface allows you to select various modes, like Office, Photo, Movie, Game, Economy etc., to fit the application in use. Based on the selection, SmartImage dynamically optimises the contrast, colour saturation and sharpness of images and videos for ultimate display performance. The Economy mode option offers you major power savings. All in real time at the touch of a single button!

SmartErgoBase



The SmartErgoBase is a monitor base that delivers ergonomic display comfort and provides cable management. The user-friendly height, swivel, tilt and rotation angle adjustments of the base allow the monitor to be positioned for maximum comfort to help ease the physical strains of a long workday. In addition, cable management reduces cable clutter and keeps the workspace neat and professional.

Built-in stereo speakers

A pair of high-quality stereo speakers built into a display device. They may be visible front firing, or invisible down firing, top firing, rear firing etc. depending on model and design.

Specifications

Please note that this is a pre-sales leaflet. The contents of this leaflet reflect the best of our knowledge per date and country mentioned above. The contents of this leaflet are subject to change without notice. Philips does not accept any liability as to the contents of this leaflet.

Picture/Display

LCD panel type TFT-LCD

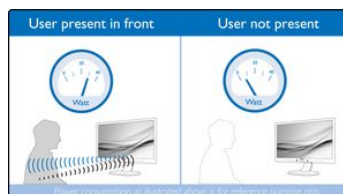
SmartConnect

With a plethora of connectivity, these Philips displays come equipped with multiple connections like VGA, DVI-D, DisplayPort, universal HDMI connector and MHL, enabling you to enjoy high-resolution uncompressed video and audio content. Regardless of what source you use, you can rest assured that this Philips display will ensure your investment is not made obsolete any time soon!

LED Technology

White LED's are solid state devices which light up to full, consistent brightness faster saving startup time. LED's are free from mercury content, which allows for eco-friendly recycling and disposal process. LED's allow for better dimming control of the LCD backlight, resulting in a super high contrast ratio. It also gives superior colour reproduction thanks to consistent brightness across the screen.

PowerSensor



PowerSensor is a built-in 'people sensor' that transmits and receives harmless infrared signals to determine if the user is present and then automatically reduces monitor brightness when then user steps away from the desk, cutting energy costs by up to 80 percent and prolonging monitor life

MHL technology



Mobile High-Definition Link (MHL) is a mobile audio/video interface for directly connecting mobile phones and other portable devices to high-definition displays. An optional MHL cable allows you to simply connect your MHL-capable mobile device to this large Philips MHL display and watch your HD videos come to life with full digital sound. Now not only can you enjoy your mobile games, photos, movies or other apps on its big screen, you can simultaneously charge your mobile device so you never run out of power halfway.

Low bezel-to-table height



Thanks to its advanced SmartErgoBase, the Philips monitor can be lowered down almost to desk level for a comfortable viewing angle. Low bezel-to-table height is the perfect solution if you use bifocals, trifocals or progressive lens glasses for your computing work. Additionally, it allows users of different heights to use the monitor at their preferred angle and height settings, helping them to reduce fatigue and strain.

Backlight type W-LED system
Panel Size 27 inch/68.6 cm

data subject to change
2017, November 2

Effective viewing area	596.7 (H) x 335.7 (V)
Aspect ratio	16:9
Optimum resolution	2560 x 1440 @ 60Hz
Response time (typical)	2 ms (Grey to Grey)*
Brightness	350 cd/m ²
Contrast ratio (typical)	1000:1
SmartContrast	20,000,000:1
Pixel pitch	0.233 x 0.233 mm
Viewing angle	170° (H)/160° (V) @ C/R > 10
Picture enhancement	SmartImage
Display colours	16.7 M
Scanning Frequency	30 - 83 kHz (H) / 56 - 76 Hz (V)
MHL	1080P @ 60 Hz
sRGB	Yes

Connectivity

Signal Input	DVI-D (digital, HDCP) VGA (Analogue) DisplayPort MHL-HDMI (digital, HDCP)
Sync Input	Separate Sync Sync on Green
Audio (In/Out)	PC audio-in Headphone out

Convenience

Built-in Speakers	2 W x 2
User convenience	SmartImage Multi-view User Menu Power On/Off
Control software	SmartControl
OSD Languages	Brazil Portuguese Czech Dutch English Finnish French German Greek Hungarian Italian Japanese Korean Polish Portuguese Russian Simplified Chinese Spanish Swedish Traditional Chinese Turkish Ukrainian
Other convenience	Kensington lock VESA mount (100 x 100 mm)
Plug and Play Compatibility	DDC/CI Mac OS X sRGB Windows 10 / 8.1 / 8 / 7

Stand

Height adjustment	120 mm
Pivot	90 degree
Swivel	-65/65 degree
Tilt	-5/20 degree

Power

ECO mode	22 W (typ.)
On mode	47 W (typ.)

Standby mode	<0.5 W (typ.)
Off mode	<0.3 W (typ.)
Power LED indicator	Operation - White Standby mode - White (flashing)
Power supply	Built-in 100-240 VAC, 50-60 Hz

Dimensions

Product with stand (mm)	639 x 540 x 244 mm
Product without stand (mm)	639 x 405 x 68 mm
Packaging in mm (W x H x D)	740 x 490 x 299 mm

Weight

Product with stand (kg)	6.72 kg
Product without stand (kg)	4.40 kg
Product with packaging (kg)	10.60 kg

Operating conditions

Temperature range (operation)	0°C to 40°C °C
Temperature range (storage)	-20°C to 60°C °C
Relative humidity	20%–80% %
Altitude	Operation: +12,000 ft (3658 m), Non-operation: +40,000 ft (12,192 m) 70,000 hrs (excluded backlight)
MTBF (demonstrated)	

Sustainability

Environmental and energy	PowerSensor RoHS
Recyclable packaging material	100 %
Recycled material	25%
Specific Substances	PVC/BFR free housing Mercury free Lead free

Compliance and standards

Regulatory Approvals	CE Mark FCC Class B CU-EAC TUV/GS TUV Ergo cETLus BSMI EPA PSB C-tick SEMKO WEEE TCO certified
----------------------	--

Cabinet

Front bezel	Black
Rear cover	Black
Foot	Black
Finish	Texture

What's in the box?

Monitor with stand	yes
Cables	VGA, DVI, DP, Audio, Power
User Documentation	yes

- * This Philips display is MHL-certified. However, if your MHL device does not connect or work correctly, check with your MHL device FAQ or vendor directly for instructions. The policy of your device manufacturer may require you to purchase its brand-specific MHL cable or adapter in order for it to work
- * Requires optional MHL-certified mobile device and MHL cable (not included). Please check with your MHL device vendor for compatibility.
- * Standby/Off energy saving of ErP is not applicable for the MHL charging functionality
- * For a complete list of MHL-enabled products, refer to www.mhlconsortium.org
- * Response time value equal to SmartResponse



data subject to change
2017, November 2

Version: 5.0.2
EAN: 8712581729042

© 2017 Koninklijke Philips N.V.
All rights reserved.

Specifications are subject to change without notice. Trademarks are the property of Koninklijke Philips N.V. or their respective owners.

www.philips.com