

PHILIPS

Pro clipper

Hairclipper series 5000

Copper motor coil

Durable, steel blades

2.8 m cord

7 click-on combs



HC5100/13



Professional clipper

More performance, less bumps

The Philips Pro hair clipper is designed to give you a quality cut or shave. The strong steel blades, a durable, linear copper motor coil, extra-long cord and various click-on combs are designed to give you a sharp cut, time after time.

Performance

- Durable, linear motor runs up to 4 times longer*
- Sharp blades for a close, precise cut

Built to last

- Strong steel blades last up to 4 times longer*
- 2 year guarantee

Precision and control

- Adjustable blades with close precision from 0.5 mm to 3 mm
- Textured handle for easy, non-slip grip
- Extra-long 2.8 m cord
- Click-on hair combs for the best clipping results

Skin comfort

- Specially designed blade tips for less cuts
- Special blades for less skin damage

Highlights

Durable linear motor



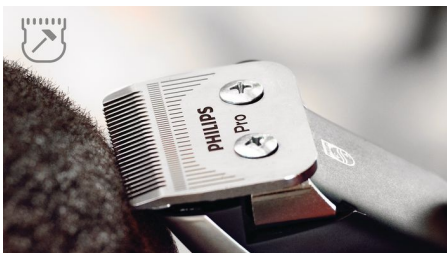
The Philips hair clipper is designed with a linear motor for constant, durable cutting power; performing up to 4 times longer*.

Sharp blades



The sharpened, stainless steel blades cut the hair at skin level, giving a close cut.

Stainless steel blades



Philips Pro steel blades are designed to withstand chips and cracks, lasting up to 4 times longer*.

2-year worldwide guarantee



All of our grooming products are built to last. They come with a two year worldwide warranty.

Adjustable blades



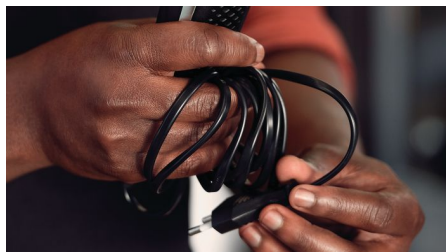
With a convenient thumb lever adjustment, the blades can be set to achieve a bold cut as well as trim stubble without using a comb. Additional combs will give you additional freedom to play with multiple hair styles.

Non-slip grip



A smart textured handle for a comfortable grip.

Extra-long cord



The extra-long cord gives you a greater reach to easily move around while clipping.

Less cuts



The tips of the Philips blades are designed to reduce the risk of cuts while clipping your hair or beard.

Less bumps



The Philips clipper is designed to ensure less bumps while creating your own unique style. Making you feel proud and confident.

7 click-on hair combs



The clipper comes with 7 click-on hair combs. Select a desired length with each different comb and achieve a consistent smooth, even trim, time after time.

Specifications

Cutting system

Cutter width: 41 mm

Cutting element: Stainless steel blades

Length selection: Thumb lever

Accessories

Attachments: 7 hair combs

Barber tools: Styling comb and scissors

Maintenance: Cleaning brush, Lubrication oil

Power cord: Extra long 2.8 m

Power system

Motor: Copper motor coil

Operation: Corded only

Service

2-year worldwide guarantee

