

PHILIPS

Sonic electric
toothbrush

3100 series

Sonic technology

Pressure sensor

QuadPacer and SmarTimer

Slim ergonomic design



HX3673/11



Goodbye manual toothbrush. Hello Sonic technology.

Up to 3x better plaque removal*

Sonic technology combined with our brush action gently removes plaque up to 3x better* than a manual toothbrush.

Provides superior clean

- Our unique technology brings you a powerful yet gentle clean
- Up to 3x better plaque removal vs a manual toothbrush*

Protects your gums

- Built-in pressure sensor protects your teeth & gums

Optimize your brushing

- Optimize your brushing with SmarTimer and QuadPacer

Designed around you

- Always know when to replace your brush heads
- 14-day long lasting battery life
- Makes traveling easier for you
- Use less. Reuse more

Easy transition to Sonicare

- Easy-Start to ease the transition

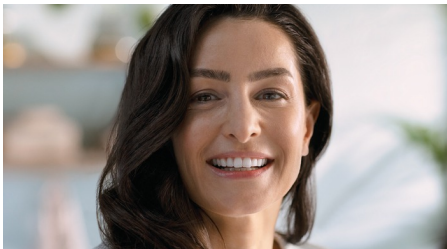
Highlights

Advanced Sonic Technology



Powerful bristle vibrations drive microbubbles deep between your teeth and along your gum line for a refreshing experience. You will get two month's worth of manual brushing in just 2 minutes.** 31000 brush strokes per minute gently clean your teeth, break up plaque, and sweep it away for an exceptional daily clean.

Removes plaque 3x better*



The Sonicare electric toothbrush with advanced sonic technology is clinically proven to remove plaque up to 3X better* than a manual toothbrush. It removes plaque from your teeth and along the gum line while protecting your gums.

Protects your gums



Built-in pressure sensor automatically detects pressure you apply, warns you, and reduces the toothbrush vibrations automatically to help protect your gums. The toothbrush will make a

pulsing sound as a reminder to ease off the pressure. 7 out of 10 people found this feature helped them become better brushers.

SmartTimer and QuadPacer



2 minute SmartTimer and 30-second QuadPacer guide you to brush for the recommended time in all areas of your mouth to ensure a complete clean.

BrushSync replacement reminder



All brush heads wear out over time, so you'll want to keep an eye on yours to make sure you're still getting a great clean. Our BrushSync technology tracks how long you've been using your brush head for, and how hard you've been brushing. The BrushSync replacement reminder on your handle and a short beep gives you a heads up when it's time to replace it.

Easy-Start



Our Easy-Start program gives you the option of a gradual, gentle increase in brushing power the first 14 times you use your new toothbrush.

Long lasting battery life



Battery life lasts up to 14 days so you can go long periods without charging.

Slim travel case



Our premium travel case lets you store your toothbrush hygienically, while our compact USB charging base keeps you topped up when you are on the go. You do get two weeks of regular use from a single full charge, but the charger's just the ticket for longer trips.

Goodbye adapter. Hello USB.

Power adapters may seem small, but added together, their plastics make a huge impact on the environment. By switching to USB charger in our Philips Sonicare 1000-4000 Series alone, we can use up to 189,210 kg less plastic every year. That's powerful, right?

Specifications

Modes

Clean: For exceptional everyday clean

Items included

Handle: 1 3100 Series

Brush head: 1 C1 ProResults standard

Travel case: 1 USB charging case

Charger: 1

Design and finishing

Color: Sugar rose

Cleaning performance

Speed: Up to 31000 brush movement/min

Performance: Removes up to 3x more plaque*

Pressure feedback: Vibrates handle to alert user

Timer: Quadpacer and SmartTimer

Smart sensor technology

BrushSync Replacement Reminder: Always know when to, replace brush heads

Pressure sensor: Alerts when brushing too hard

Ease of use

Handle: Slim ergonomic design

Battery indicator: Light shows battery status

Brush head system: Easy click-on brush

heads

BrushSync Replacement Reminder:

Replacement reminder, Always know when to, replace brush heads, Reminder icon lights up, to always ensure best results

Technical specifications

Battery: Rechargeable

Battery type: Lithium ION

Operating time (full to empty): 14 days****

Power

Voltage: DC5V

Service

Warranty: 2-year limited warranty

