

# PHILIPS

IPL - Hair removal device

Lumea Prestige

2 intelligent attachments

Body, face

With SenseIQ technology

BRI945/00



## Enjoy 6 months\* of hair-free smoothness

### Intelligent attachments designed for best results

Philips Lumea Prestige, our most powerful IPL yet, designed for your body's curves and the easiest at-home experience. Uniquely curved, intelligent attachments perfectly fit your curves and adapt the treatment programmes for each body area.

#### Maximum freedom, minimum hassle

- With SmartSkin sensor
- FREE Lumea App for a personal coach at your fingertips
- No replacement parts, no hidden costs

#### Long-lasting smooth skin with Lumea IPL technology

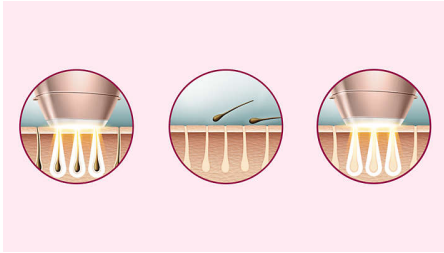
- Expert IPL technology at-home, developed with dermatologists
- Proven safe and effective treatment
- Suitable for a wide variety of hair and skin types
- SenseIQ technology for personalized hair removal

#### Specialised treatment of different body areas

- Precision face attachment with extra filter
- Intelligent attachments adapt programmes for each body area
- Body attachment with curved-in design

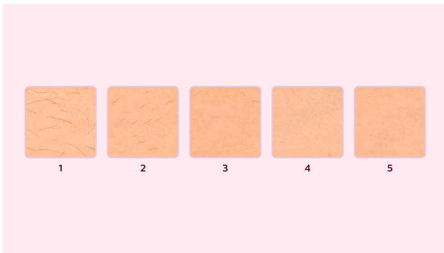
# Highlights

## Lumea prevents hair regrowth\*



IPL stands for Intense Pulsed Light. Philips Lumea applies gentle pulses of light to the hair root, putting the follicle into a resting phase. As a consequence, the amount of hair your body grows gradually decreases. Repeating the treatment leaves your skin beautifully hair free and touchably smooth. Treatment to prevent hair regrowth is safe and gentle, even on sensitive areas. Philips Lumea is clinically tested and developed with dermatologists for easy and effective treatment, from the comfort of your own home.

## Proven effectiveness



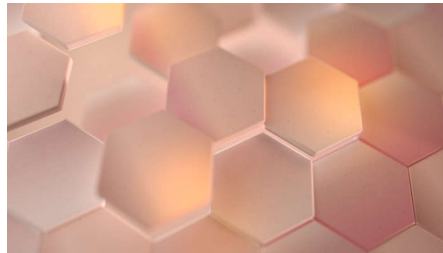
Objective studies show up to 92% hair reduction in as little as 3 treatments\*\*. The first 4 treatments must be carried out every 2 weeks, after which you should already be able to see the desired results. To maintain your results, simply touch up every 4 weeks. After just 8 touch up treatments you can be hair-free for 6 months\* To enlarge this picture, please click on the image in the image gallery at the top of this page.

## Suitable hair and skin types



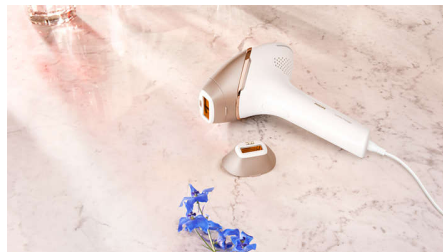
Philips Lumea Prestige works effectively, easily and safely on a wide variety of hair and skin types. It works on naturally dark blonde, brown and black colored hairs and on skin tones from very white to dark brown. As with other IPL based treatments, Philips Lumea cannot be used to treat white / grey, light blonde or red hair and is not suitable for very dark skin. This is due to the high contrast required between the pigment in hair color and pigment in the skin tone.

## SenseIQ technology



Senses. Lumea's SmartSkin sensor detects your skin tone and indicates the most comfortable light setting for you. Adapts. Intelligent attachments adapt programs tailored for each body area. Cares. Co-developed with dermatologists and inspired by you for gentle, long-lasting hair removal, even on sensitive areas\*\*\*.

## Treatment of body areas



Your body is unique. And its skin, curves and contours should be treated uniquely too. Lumea's total-body attachments are shaped to

perfectly fit every curve and will adapt programmes tailored to each body area. Treatment windows are designed to maximise contact with your skin to ensure light doesn't escape, enabling effective and gentle treatments even on delicate or sensitive areas.

## Body attachment



The intelligent body attachment has our largest treatment window at 4.1 cm<sup>2</sup> so it's perfect for fast treatment of larger body areas like legs, arms and stomach. The curved-in design closely follows your body's contours for maximum skin contact. The click-on attachment adapts a tailored programme specifically for your body areas. 83% of women were satisfied with hair reduction on legs\*\*\*\*.

## Face attachment



The face attachment has been thoughtfully designed to have a small, flat 2 cm<sup>2</sup> window so you can effectively and gently treat hair on your face. Ideal for your upper lip, chin or jawline, the attachment also has an extra integrated filter. When added to the device, the intelligent attachment automatically adapts the light treatment for your face. 84% of women were satisfied with hair reduction on face\*\*\*\*.

# Specifications

## Technical specs. attachments

**Body treatment attachment:** Window size: 4.1 cm<sup>2</sup>, Shape: Convex curved, Tailored treatment for body

**Face treatment attachment:** Window size: 2 cm<sup>2</sup>, extra filter, Shape: Flat, Tailored treatment for face

## Power

**Voltage:** 100-240 V

## Service

**Warranty:** 2-year global warranty + 1 extra year of warranty upon product registration within 90 days

## Technical specifications

**High performance lamp:** Delivers 450,000 flashes

## Application areas

**Body areas:** Arms, Legs, Stomach

**Sensitive areas:** Underarms, Bikini

**Face areas:** Chin, Upper lip, Jawline

## Items included

**Instructions for use:** User manual

**Storage:** Luxurious pouch

**Adapter:** 19.5 V / 4000 mA

## Safety and adjustable settings

**Integrated UV filter:** Protects skin from UV light  
**5 light energy settings:** Adjustable to your skin type

**Integrated safety system:** Prevent unintentional flashing

**Skin Tone sensor:** Detects your skin tone

**SmartSkin sensor:** The right setting on demand

## Application time

**Face areas:** 1.5 min

**Lower legs:** 8.5 min

## Application mode

**Slide and Flash:** For quick application

**Corded/cordless use:** Corded

**Stamp and Flash:** For treatment on small areas

## Consumer Trade Item

**Height:** 14

**Width:** 26.5

**Length:** 19

**Net Weight:** 1.029

**Gross Weight:** 1.64

**GTIN:** 08710103827153

**Country of origin:** SI

**Harmonized system code:** 85437090

## Outer Carton

**Height:** 20

**Width:** 27.4

**Length:** 28.8

**Net Weight:** 2.058

**Gross Weight:** 3.472

**GTIN:** 18710103827150

