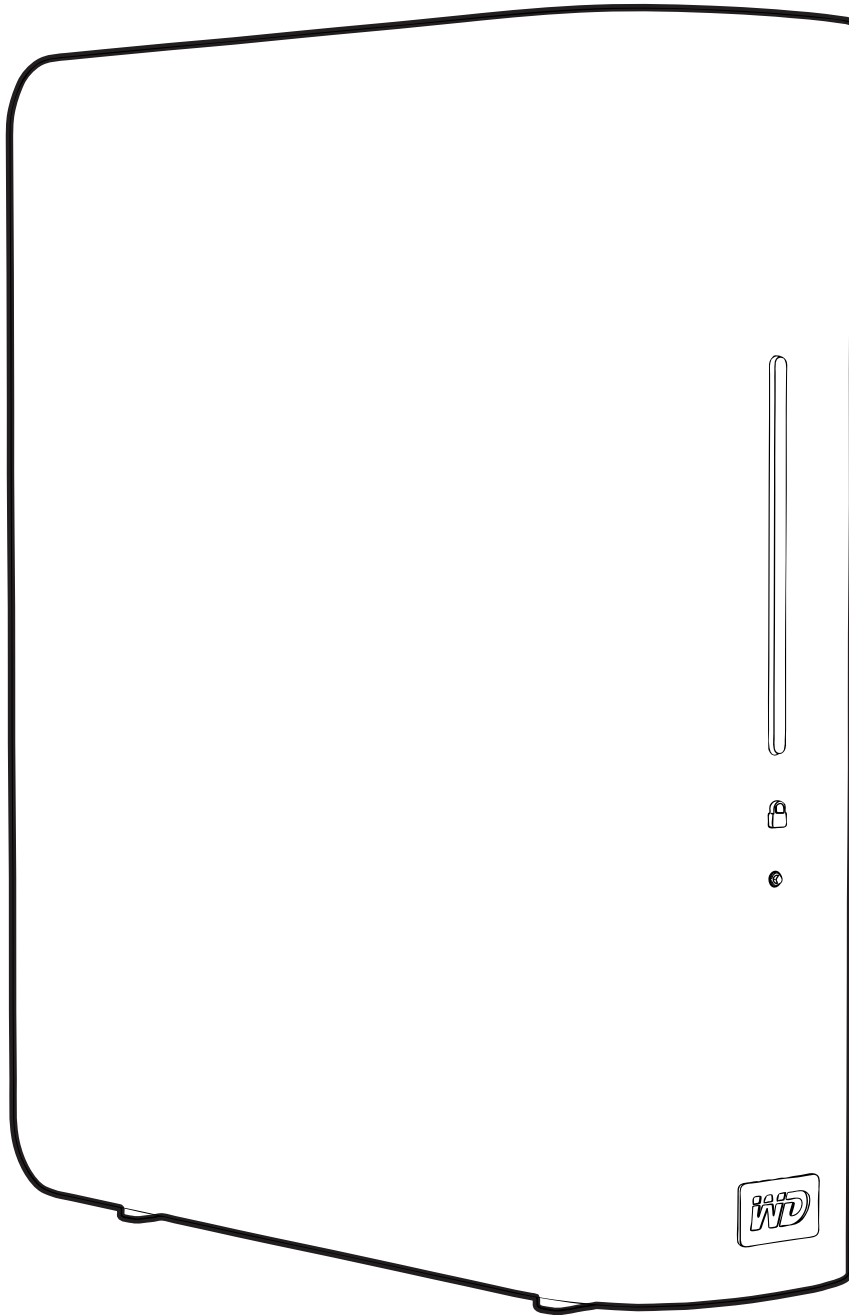


# My Book<sup>®</sup>

For Mac<sup>®</sup>

User Manual



## WD Service and Support

Should you encounter any problem, please give us an opportunity to address it before returning this product. Most technical support questions can be answered through our knowledge base or e-mail support service at <http://support.wdc.com>. If the answer is not available or if you prefer, please contact WD® at the best telephone number shown below.

Your product includes 30 days of free telephone support during the warranty period. This 30-day period starts on the date of your first telephone contact with WD Technical Support. E-mail support is free for the entire warranty period and our extensive knowledge base is available 24/7. To help us keep you informed of new features and services, remember to register your product online at <http://register.wdc.com>.

### Accessing Online Support

Visit our product support website at <http://support.wdc.com> and choose from these topics:

- **Downloads**—Download drivers, software, and updates for your WD product.
- **Registration**—Register your WD product to get the latest updates and special offers.
- **Warranty & RMA Services**—Get warranty, product replacement (RMA), RMA status, and data recovery information.
- **Knowledge Base**—Search by keyword, phrase, or answer ID.
- **Installation**—Get online installation help for your WD product or software.

### Contacting WD Technical Support

When contacting WD for support, have your WD product serial number, system hardware, and system software versions available.

North America		Asia Pacific	
English	800.ASK.4WDC (800.275.4932)	Australia	1 800 42 9861
Spanish	800.832.4778	China	800 820 6682/+65 62430496
		Hong Kong	+800 6008 6008
		India	1 800 11 9393 (MNTL)/1 800 200 5789 (Reliance) 011 26384700 (Pilot Line)
<b>Europe (toll free)*</b>	00800 ASK4 WDEU (00800 27549338)	Indonesia	+803 852 9439
		Japan	00 531 650442
		Korea	02 703 6550
<b>Europe</b>	+31 880062100	Malaysia	+800 6008 6008/1 800 88 1908/+65 62430496
<b>Middle East</b>	+31 880062100	Philippines	1 800 1441 0159
<b>Africa</b>	+31 880062100	Singapore	+800 6008 6008/+800 608 6008/+65 62430496
		Taiwan	+800 6008 6008/+65 62430496

\* Toll free number is available in the following countries: Austria, Belgium, Denmark, France, Germany, Ireland, Italy, Netherlands, Norway, Spain, Sweden, Switzerland, United Kingdom.

# Table of Contents

WD Service and Support . . . . .	ii
Accessing Online Support . . . . .	ii
Contacting WD Technical Support . . . . .	ii
<b>1 About Your WD Drive . . . . .</b>	<b>1</b>
Features . . . . .	1
Kit Contents . . . . .	2
Optional Accessories . . . . .	2
Operating System Compatibility . . . . .	3
Disk Drive Format . . . . .	3
Physical Description . . . . .	3
Illuminated Capacity Gauge . . . . .	4
Lock Indicator LED . . . . .	4
Power/Activity LED . . . . .	4
Power Button . . . . .	5
USB 2.0 Interface . . . . .	5
Kensington® Security Slot . . . . .	5
Registering the Drive . . . . .	5
Handling Precautions . . . . .	5
<b>2 Connecting the Drive and Getting Started . . . . .</b>	<b>6</b>
Connecting the Drive . . . . .	6
Enhancing Performance with WD +TURBO . . . . .	7
Getting Started with the WD SmartWare Software . . . . .	9
WD SmartWare Software Overview . . . . .	11
WD SmartWare Home Screen . . . . .	12
Viewing the Info/Online Help Topics . . . . .	13
<b>3 Backing Up Your Computer Files . . . . .</b>	<b>14</b>
About Backing Up Your Computer Files . . . . .	14
Backing It All Up . . . . .	16
Advanced Backup Capabilities . . . . .	17
Selecting Specific Files to Back Up . . . . .	17
Changing the Backup Software Settings . . . . .	18
<b>4 Retrieving Backed Up Files . . . . .</b>	<b>21</b>
About Retrieving Files . . . . .	21
Retrieving Files or Folders . . . . .	21
<b>5 Locking and Unlocking the Drive . . . . .</b>	<b>25</b>
Password Protecting the Drive . . . . .	25
Unlocking the Drive . . . . .	26
Unlocking the Drive with the WD SmartWare Software . . . . .	27
Unlocking the Drive Without the WD SmartWare Software . . . . .	28
Changing Your Password . . . . .	29
Turning Off the Drive Lock Feature . . . . .	30

<b>6</b>	<b>Managing and Customizing Your Drive</b> .....	<b>31</b>
	Using the WD SmartWare Icon. ....	31
	Opening the WD SmartWare Software. ....	31
	Checking Drive Status .....	32
	Safely Dismounting the Drive .....	32
	Customizing Your Software Settings .....	34
	Specifying a Different Retrieve Folder .....	34
	Setting the Preferences Options .....	35
	Customizing Your Drive Settings .....	35
	Registering the Drive .....	36
	Setting the Drive Sleep Timer. ....	37
	Erasing the Drive .....	38
	Uninstalling the WD SmartWare Software .....	40
	Restoring the WD SmartWare Software and Disk Image .....	41
<b>7</b>	<b>Checking Drive Health</b> .....	<b>42</b>
<b>8</b>	<b>Using the Drive with Windows</b> .....	<b>44</b>
	Reformatting the Drive .....	44
	Restoring the WD SmartWare Software and Disk Image .....	44
	Connecting the Drive .....	44
	Getting Started with the WD SmartWare Software .....	46
	Using the WD SmartWare Icon. ....	51
	Opening the WD SmartWare Software. ....	51
	Checking Drive Status .....	52
	Monitoring Icon Alerts .....	52
	Safely Disconnecting the Drive. ....	52
	Enabling the Backup and Retrieve Functions. ....	53
	Unlocking the Drive .....	53
	Unlocking the Drive with the WD SmartWare Software .....	54
	Unlocking the Drive Without the WD SmartWare Software .....	55
	Uninstalling the WD SmartWare Software .....	55
	Uninstalling on Windows XP Computers .....	55
	Uninstalling on Windows Vista or Windows 7 Computers .....	56
	Getting Started Without the WD SmartWare Software. ....	56
<b>9</b>	<b>Troubleshooting</b> .....	<b>57</b>
	Installing, Partitioning, and Formatting the Drive .....	57
	Frequently Asked Questions. ....	57
<b>A</b>	<b>Installing the SES Driver.</b> .....	<b>59</b>
	Installing on Windows XP Computers .....	59
	Installing the Driver Automatically .....	59
	Installing the Driver Manually .....	61
	Installing on Windows Vista Computers .....	62
	Installing the Driver Automatically .....	63
	Installing the Driver Manually .....	64
	Installing on Windows 7 Computers. ....	66

<b>B</b>	<b>Compliance and Warranty Information . . . . .</b>	<b>68</b>
	Regulatory Compliance . . . . .	68
	FCC Class B Information . . . . .	68
	ICES/NMB-003 Compliance. . . . .	68
	Safety Compliance . . . . .	68
	CE Compliance For Europe . . . . .	68
	GS Mark (Germany only) . . . . .	68
	KCC Notice (Republic of Korea only) . . . . .	69
	Environmental Compliance (China). . . . .	69
	Warranty Information . . . . .	69
	Obtaining Service . . . . .	69
	Limited Warranty . . . . .	70
	GNU General Public License (“GPL”). . . . .	70
	<b>Index . . . . .</b>	<b>71</b>

## About Your WD Drive

Welcome to your My Book® for Mac® external hard drive, an elegant, high-capacity storage solution for all the chapters of your digital life. Our latest edition features visual, easy-to-use, automatic, continuous backup software, and drive lock security protection.

WD's best-selling My Book for Mac USB external hard drive features WD SmartWare software that backs up your data automatically and continuously, shows your backup as it happens, and brings back lost files effortlessly.

This chapter includes the following topics:

- [Features](#)
- [Kit Contents](#)
- [Optional Accessories](#)
- [Operating System Compatibility](#)
- [Disk Drive Format](#)
- [Physical Description](#)
- [Registering the Drive](#)
- [Handling Precautions](#)

### Features

Major features of the My Book for Mac drive include:

**Smaller, sleeker, more streamlined design**—We've made these award-winning drives even smaller, sleeker, and more elegant. As always, the book-like shape takes up less space on your desk and allows two or more My Book drives to nestle neatly together like volumes on a shelf.

**WD SmartWare™ software**—An easy-to-use backup solution that gives you the power to:

- Protect your data automatically - Relax! Your data is secure. Automatic, continuous backup will instantly make a second copy whenever you add or change a file.
- See your backup as it happens—Seeing is believing. Visual backup organizes and displays your content into categories and shows the progress of your backup.
- Bring back lost files effortlessly—Retrieve your valuable data to its original location whether you've lost all your data, deleted a file, or just overwritten an important file.
- Take control—Customize your backup, set drive security, run diagnostics, manage the power settings, and more from the WD SmartWare control center.
- Drive lock—Gain peace of mind knowing that your data is protected from unauthorized access or theft with password protection and 256-bit hardware-based encryption.

**Illuminated capacity gauge**—See at a glance how much space is available on your drive.

**USB 2.0 interface**—A simple connection that offers convenience and compatibility among multiple computers.

**Power miser**—My Book external drives are designed to save energy. WD GreenPower Technology™ lowers internal drive power consumption by up to 30%, a sleep mode reduces power during idle times, and a power-saving feature turns the drive on and off with your computer.

**Planet friendly**—We designed a small box from recycled materials to minimize waste. We encourage you to recycle it.

**Ready to plug-and-play with Mac computers**—HFS+J-formatted for compatibility with all Mac OS X operating systems.

**Support for multiple drives**—One installation of the software supports up to three WD drives (My Book or My Passport drives with WD SmartWare software).

---

**Important:** For the latest WD product information and news, visit our website at [www.westerndigital.com](http://www.westerndigital.com). For the latest software, firmware, and product documentation and information, go to <http://support.wdc.com/downloads>.

---

## Kit Contents

As shown in Figure 1, your My Book for Mac disk drive kit includes the following:

- My Book for Mac external hard drive
- USB cable
- AC adapter (configuration varies, depending on region)
- Quick Install Guide
- WD SmartWare software (included on the drive)

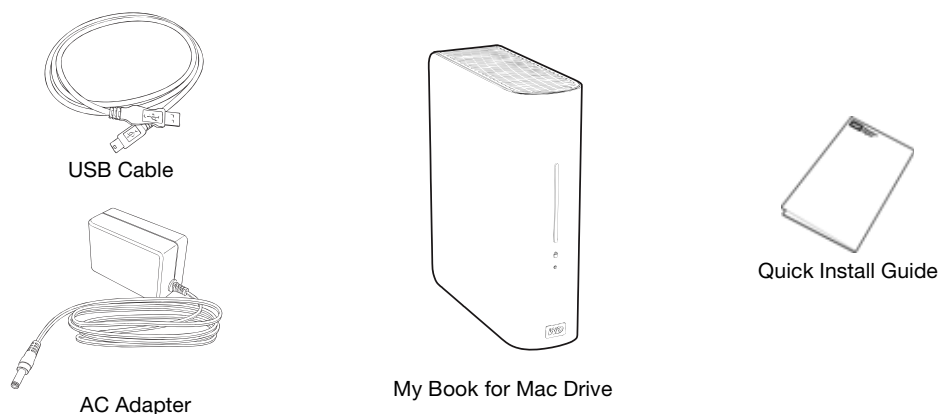


Figure 1. My Book Drive Kit Components

## Optional Accessories

For information about optional accessories for this product, visit:

US	<a href="http://www.shopwd.com">www.shopwd.com</a> or <a href="http://www.wdstore.com">www.wdstore.com</a>
Canada	<a href="http://www.shopwd.ca">www.shopwd.ca</a> or <a href="http://www.wdstore.ca">www.wdstore.ca</a>
Europe	<a href="http://www.shopwd.eu">www.shopwd.eu</a> or <a href="http://www.wdstore.eu">www.wdstore.eu</a>
All others	Contact WD Technical Support in your region. For a list of Technical Support contacts, visit <a href="http://support.wdc.com">http://support.wdc.com</a> and see Knowledge Base Answer ID 1048.

## Operating System Compatibility

Your My Book for Mac drive and the WD SmartWare software are compatible with the following operating systems:

### Mac® OS X®

- Tiger®
- Leopard®
- Snow Leopard™

### Windows®

- Windows XP
- Windows Vista®
- Windows 7

Compatibility can vary, depending on hardware configuration and operating system.

For highest performance and reliability, always install the latest software update and service pack (SP). For Mac computers, go to the **Apple** menu and select **Software Update**. For Windows computers, go to the **Start** menu and select **Windows Update**.

## Disk Drive Format

Your My Book for Mac drive is preformatted as a single HFS+J partition for Mac OS X operating systems. If you want to use this drive with a Windows system, see “Reformatting the Drive” on page 44 and “Troubleshooting” on page 57.

## Physical Description

As shown in Figure 2 and Figure 3 on page 4, the My Book for Mac drive has:

- Indicators on the front
- The power connector and button, interface port, and a security slot on the back

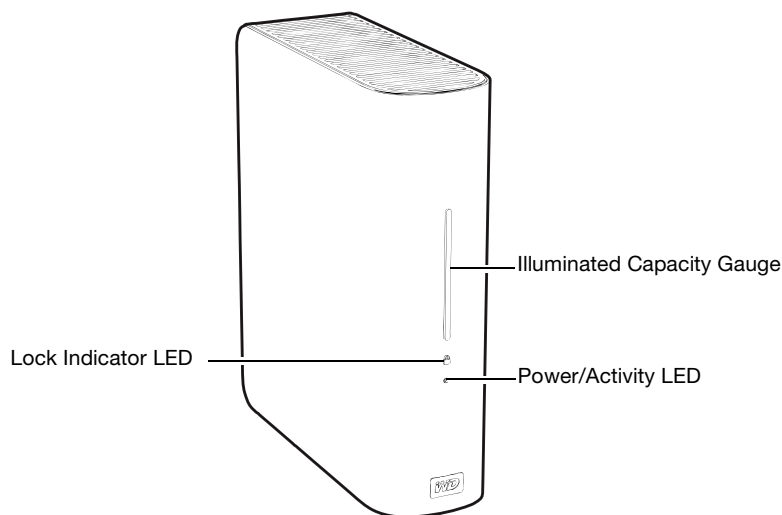


Figure 2. Front of the My Book for Mac Drive



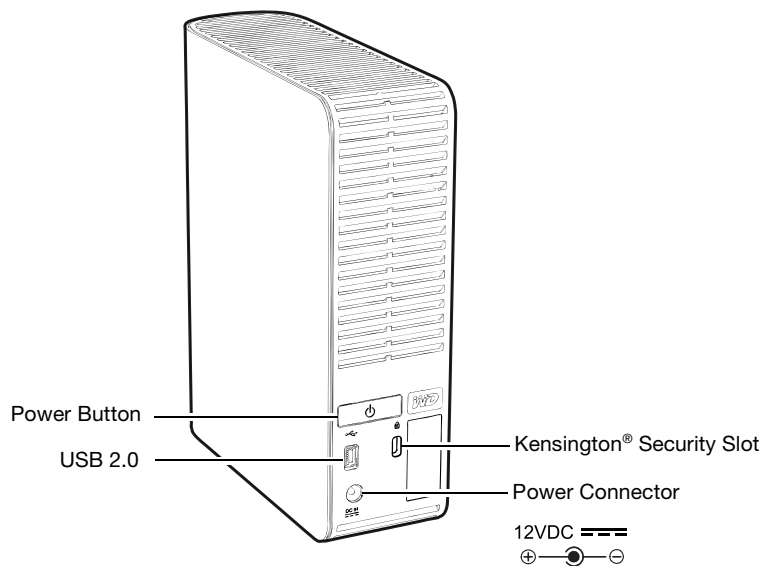


Figure 3. Back of the My Book for Mac Drive

## Illuminated Capacity Gauge

The capacity gauge has four segments that illuminate from bottom to top to indicate space used on the drive during the power-on state. Each segment represents approximately 25 percent of drive capacity:

Segment	Percent Used
4	75 to 100
3	50 to 74.99
2	25 to 49.99
1	0 to 24.99

The illuminated capacity gauge only works when the WD SmartWare software is installed on your computer.

## Lock Indicator LED

The lock indicator LED shows whether the drive is password protected. It is turned off only when you remove the password from the drive or the drive loses power.

## Power/Activity LED

The power/activity LED shows the drive's power state and activity as follows:

LED Appearance	Power State/Activity
On steady	Idle
Fast flashing, approximately 3 times per second	Activity
Slow flashing, approximately every 2.5 seconds	System standby

## Power Button

Use the power button to safely power down the drive and avoid data loss or damage to the drive. The power button only works when the WD SmartWare software is installed on your computer.

*Note:* If you disconnect the drive after using the power button to turn it off, when you reconnect it to your running computer, the drive automatically powers on. If you leave the drive connected to your computer after using the power button to turn it off, you must press the power button again to turn it back on.

## USB 2.0 Interface

The Hi-Speed USB 2.0 supports data transfer rates up to 480 Mb/s. USB 2.0 is backward-compatible with USB 1.1. Connection to a USB 1.1 port transfers data at USB 1.1 speed (up to 12 Mb/s).

## Kensington® Security Slot

For drive security, the Kensington security slot accepts a standard Kensington security cable (sold separately). For more information about the Kensington security slot and available products, visit [www.kensington.com](http://www.kensington.com).

## Registering the Drive

Always register your My Book for Mac drive to get the latest updates and special offers. You can easily register your drive using WD SmartWare software, as described in “Registering the Drive” on page 36. Another way is to register online at <http://register.wdc.com>.

## Handling Precautions

WD products are precision instruments and must be handled with care during unpacking and installation. Drives can be damaged by rough handling, shock, or vibration. Observe the following precautions when unpacking and installing your external storage product:

- Do not drop or jolt the drive.
- Do not move the drive during activity.
- Do not use this product as a portable drive.
- To allow proper ventilation, do not block any of the enclosure’s air slots.

2

## Connecting the Drive and Getting Started

This chapter provides instructions for connecting the drive to your computer and installing the WD SmartWare software. It includes the following topics:

- [Connecting the Drive](#)
- [Enhancing Performance with WD +TURBO](#)
- [Getting Started with the WD SmartWare Software](#)

### Connecting the Drive

To connect the My Book drive to your Mac computer:

1. Depending on your region, if required, change the power adapter as follows:



2. Turn on your computer.
3. Connect the My Book drive as shown in Figure 4.

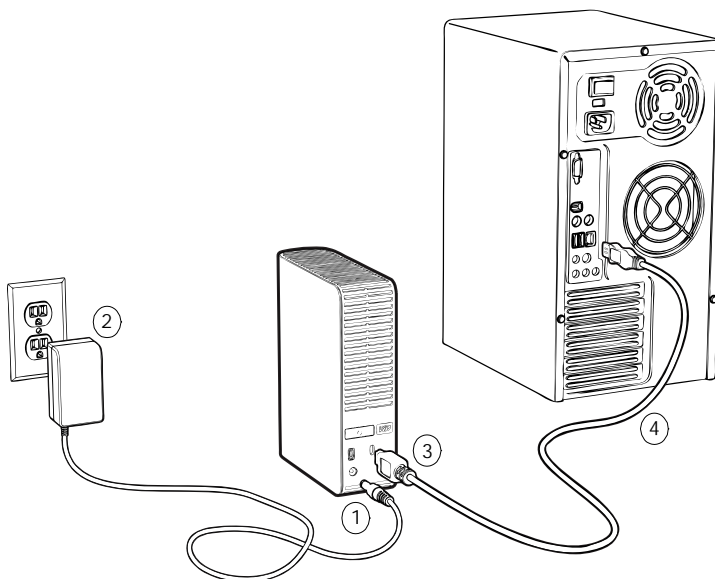


Figure 4. Connecting the My Book Drive

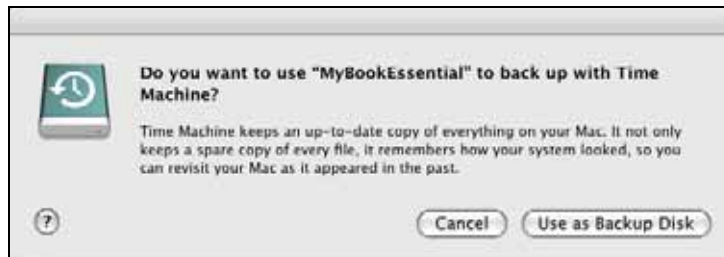
*Note:* If you have reformatted the drive for use on a Windows computer, skip the rest of this procedure and see “Connecting the Drive” on page 44 instead.

4. Verify that the My Book icon displays on your desktop:



MY BOOK

5. For Mac OS X Leopard and Snow Leopard only, the first time you connect your My Book drive to your computer, a message asks if you want to use the drive to back up with Time Machine:



WD SmartWare software is fully compatible with Apple's Time Machine software. When using Time Machine, you can still use the WD SmartWare software for password protecting the drive, registering the drive, and running drive diagnostics.

- a. If you *do not* want to use the Time Machine backup software, click **Cancel**.
- b. If you *do* want to use the Time Machine backup software, click **Use as Backup Disk**. The My Book icon now displays as:



My Book

Your My Book drive is now ready to use as an external storage device. You can enhance its performance by installing the following software that is on the drive:

- WD +TURBO utility (see “Enhancing Performance with WD +TURBO” in the next section)
- WD SmartWare software (see “Getting Started with the WD SmartWare Software” on page 9)

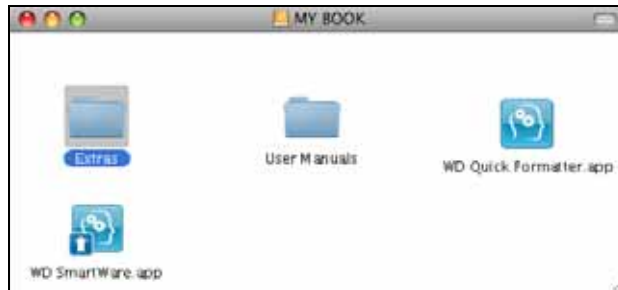
## Enhancing Performance with WD +TURBO

WD +TURBO is a utility on the My Book drive that you can install to improve the performance of the drive on a Mac computer.

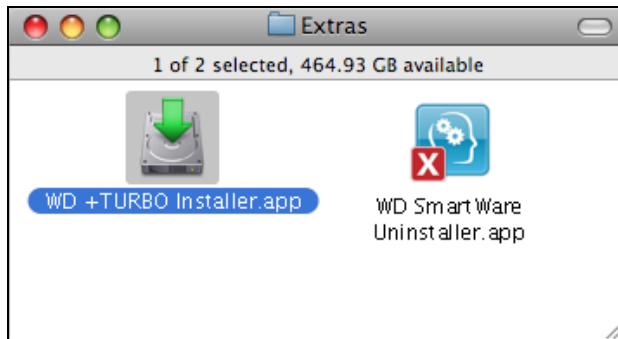
If you are going to install the WD SmartWare software, you do not need to install the WD +TURBO utility yourself—the WD SmartWare software will install it for you. If you are not going to install the WD SmartWare software, install WD +TURBO to enhance the performance of your My Book drive.

To install WD +TURBO:

1. Double-click the My Book icon and then double-click the Extras folder on the screen that displays:



2. Double-click the WD +TURBO Installer icon:



3. Click **Install** on the WD +TURBO Driver Installer screen:

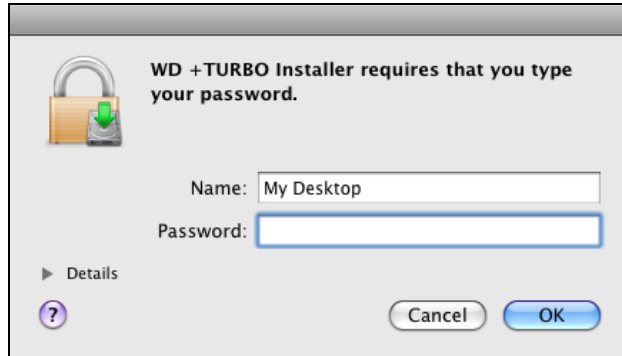


4. Read the license agreement and click **Accept** to continue.
5. A message informs you that installing the drivers requires you to restart your computer to make them active:

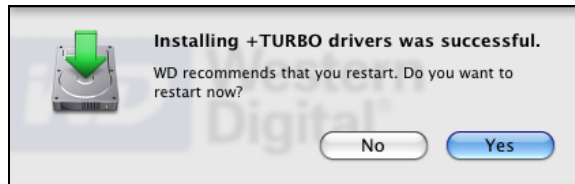


Click **Yes** to continue.

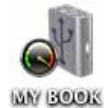
6. Type the password that you use to access the computer in the **Password** box and click **OK**:



7. When the installation completes, click **Yes** to restart the computer:



8. When the computer restarts, the My Book icon looks like this:

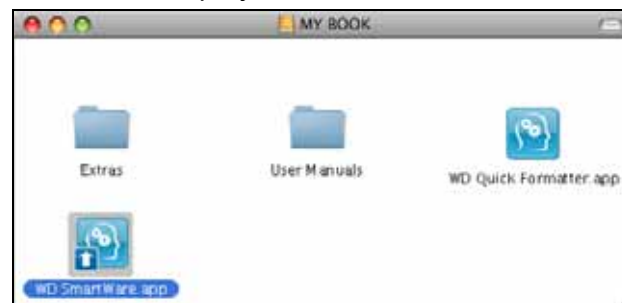


Your My Book drive is now ready to use as an enhanced-performance external storage device.

## Getting Started with the WD SmartWare Software

To install the WD SmartWare software:

1. Double-click the My Book icon and then double-click the WD SmartWare icon on the screen that displays:



- The WD SmartWare Software Installer screen displays:



- Click **Continue to Install** and the installer utility detects that the WD SmartWare software is not installed:



- Click **Install WD SmartWare** to begin the installation.
- Read the license agreement and click **Accept** to continue.
- Type the password that you use to access the computer in the **Password** box and click **OK**:



- Wait for the installation to complete. This could take several minutes:



- When the installation completes, the WD SmartWare Home screen displays (see Figure 5 on page 11).



Figure 5. WD SmartWare Home Screen

## WD SmartWare Software Overview

The WD SmartWare software is an easy-to-use tool that gives you the power to:

- Secure your drive—In drive settings, create a password to protect your drive from unauthorized access or data theft.
- Protect your data automatically—Automatic, continuous backup instantly makes a copy whenever you add or change a file.

*Note:* Automatic backup protection is continuous for as long as your My Book drive is connected to your computer. Then, whenever you disconnect and reconnect the drive to your computer, the WD SmartWare software rescans your computer for new or changed files and resumes automatic, continuous backup as before.

- See your backup as it happens—Seeing is believing. Visual backup organizes and displays your content into categories and shows the progress of your backup.
- Retrieve lost files effortlessly—Bring back your valuable data to its original location whether you've lost all your data or just overwritten an important file.



## WD SmartWare Home Screen

The WD SmartWare Home screen has four tab-selected options:

- **Home**—Provides a Content Gauge with the capacity of each hard drive in or connected to your computer (see Figure 5 on page 11)
- **Backup**—Manages existing backups or creates new backups of your important data, including movies, music, documents, e-mail, and photos (see Figure 6 on page 15)
- **Retrieve**—Brings back valuable data that has been lost or overwritten (see Figure 9 on page 22)
- **Settings**—Manages security, diagnostics, power settings, and backup parameters (see Figure 7 on page 18)

On the WD SmartWare Home screen, you can modify the primary drive being categorized with the drop-down selection box under the name of your computer. After you select a different drive, the WD SmartWare software identifies the categories of files on that drive. Then click the:

- **Backup** tab to back up files from the selected drive to your My Book drive
- **Retrieve** tab to retrieve backed up files from your My Book drive to any location on your computer

In the Content Gauge for your computer's hard drive, all of your files that are available for backup are shown against a blue background in categories that are based on the following folders on your computer:

- **Music**
- **Movies**
- **Pictures**
- **Mail**
- **Documents**
- **Other**

Each category includes all of the files in the represented folder except the **Other** category, which includes all of the files in all other folders on your computer.


Note that:

- The **System** category, shown against a dark gray background, includes all of your operating system files that are not available for backup. Files that are not backed up include system files, program files, applications, working files, and *any* files that are stored in a Temp folder.
- The **Retrieved** category, also shown against a dark gray background, includes the files that you have retrieved from a prior backup. They, too, are not available for backup.
- Hovering the pointer over a category shows the number of files in the category.

In the Content Gauge for your My Book drive, the **Additional Files** category includes all of the files shown in the used space portion of your drive properties. This space is not available for backups.

*Note:* The small number of files that are shown in the **Additional Files** category when you first install the WD SmartWare software—before performing your first backup—represents the system and hidden files that your computer’s operating system put there when you installed the drive.

## Viewing the Info/Online Help Topics

Each WD SmartWare screen provides easy access to online help information to quickly guide you through your backup, retrieve, and settings tasks. Whenever you are uncertain about what to do, just click the info/online help icon  in the upper-right corner of any screen:



To close the info/help screen after reading the online help, click the red X button in the upper-left corner of the screen.

## Backing Up Your Computer Files

This chapter includes the following topics:

- [About Backing Up Your Computer Files](#)
- [Backing It All Up](#)
- [Advanced Backup Capabilities](#)

### About Backing Up Your Computer Files

The WD SmartWare software automatically and continuously backs up all your important files to the My Book drive—music, movies, photos, documents, e-mail, and other files.

*Note:* One installation of the WD SmartWare software supports up to three backup drives that are configured with WD SmartWare software.

After the WD SmartWare software categorizes the different types of files on the selected hard drive, clicking the **Run Backup** button backs all of them up. Or you can select specific types of files to back up.

If your computer has more than one hard drive, you must select and back up each one to protect all of the files on your computer.

After performing a backup, the WD SmartWare software protects your files by backing up any:

- New file that is created on or copied to your hard drive
- Existing file that is changed in any way

This protection is automatic—the WD SmartWare software does it for you without any action on your part—just make sure to leave your My Book drive connected to your computer.

*Note:* Automatic backup protection is continuous for as long as your My Book drive is connected to your computer. Then, whenever you disconnect and reconnect the drive to your computer, the WD SmartWare software rescans your computer for new or changed files and resumes automatic, continuous backup as before.

Additionally, the Backup screen (see Figure 6 on page 15) provides:

- Content Gauges for your computer's disk drives so you can see the number of files and the storage size for each content category
- An **Update Gauges** button for rescanning the drive and verifying accurate Content Gauge counts after adding or changing files on your computer
- A **Detailed View** content box that you can use to select specific categories of files or folders to back up, with **Apply** and **Revert** buttons for implementing or disregarding your selections
- **Run Backup** and **Pause Backup** buttons for controlling backups

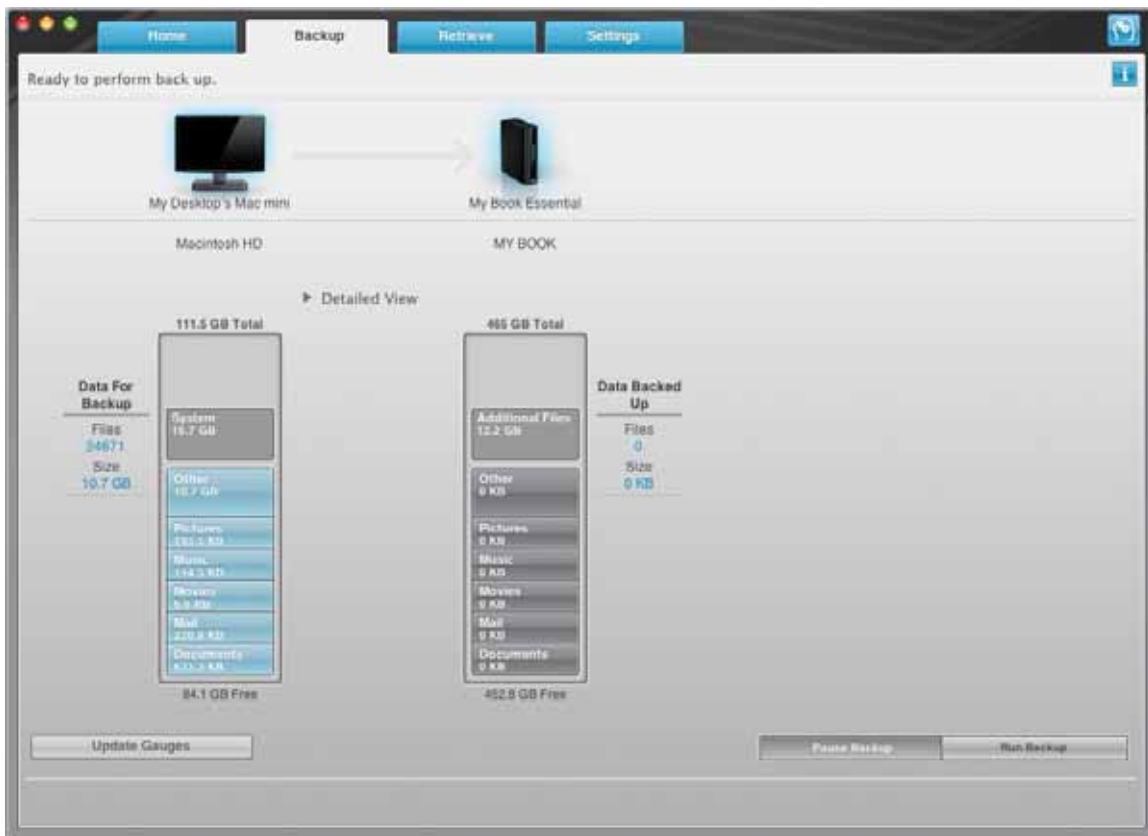


Figure 6. Backup Screen

In the Content Gauges for your computer's disk drives, the categories of files that would be included in the backup if you click **Run Backup** are shown where a:

- Light blue background in the Content Gauge for your computer's hard drive represents the original files that are available for backup.
- Gray background in the Content Gauge for your My Book drive represents the potential backup copies of the original files.
- Dark blue background identifies categories of files that have been backed up

In the Content Gauge for your My Book drive, the **Additional Files** category includes all of the files shown in the used space portion of your drive properties. This space is not available for backups.

In the Content Gauges and the **Detailed View** content box, the file categories are based on the following folders on your computer:

- **Music**
- **Movies**
- **Pictures**
- **Mail**
- **Documents**
- **Other**

Each category includes all of the files in the represented folder except the **Other** category, which includes all of the files in all other folders on your computer.

Note that:

- The **System** category, shown against a dark gray background, includes all of your operating system files that are not available for backup. Files that are not backed up include system files, program files, applications, working files, and *any* files that are stored in a Temp folder.
- The **Retrieved** category, also shown against a dark gray background, includes the files that you have retrieved from a prior backup. They, too, are not available for backup.
- Hovering the pointer over a category displays the number of files in the category.

To back up other internal hard drives, click the **Home** tab and select the drive.

## Backing It All Up

To back up all of your computer files:

1. If your computer has more than one hard drive, select the drive that you want to back up first from the drop-down menu under the graphic representation and name of your computer on the WD SmartWare Home screen.
2. Click the **Backup** tab to display the Backup screen (see Figure 6 on page 15).
3. Click **Run Backup** to back up all of your files.
4. During the backup:
  - The Backup screen displays a progress bar and a message indicating the amount of data that has been backed up.
  - The blue background in the Content Gauge for your computer's hard drive changes to yellow/amber for all of the files that have not yet been backed up.
  - The gray background in the Content Gauge for your My Book drive changes to blue for each category as the backup completes.
  - You can continue to set up your drive or perform any other functions because the WD SmartWare software will back up all of your files in the background.
  - A **Pause Backup** button is available for stopping the backup.
5. Appearance of a backup successfully finished message means that the backup completed normally.

If any files could not be backed up, their representations remain yellow/amber in the Content Gauge for your computer's hard drive and the WD SmartWare software displays a:

- Caution message indicating the number of files involved
- **View** link that you can click to see a list of the files and the reasons they were not backed up

Some applications and running processes can keep files from being backed up. If you cannot determine why some of your files were not backed up, try:

- Saving and closing all of your open files
- Closing all running applications—including your e-mail program and web browser

**Important:** Appearance of a Caution message indicating that your drive is full means that there is not enough free space on the drive to complete the backup.

The best long-term solution would be to relegate the drive to long-term archive storage and:

- a. Click the **Home** tab to display the Home screen.
- b. Click the **WDStore** link in the WD Online box to view the Western Digital Online Store website.
- c. Click **External Hard Drives** and select the best drive to suit your future requirements.

6. If you clicked **Pause Backup** at step 4, the **Stop backup?** confirmation prompt reminds you that the WD SmartWare software runs your backup job in the background so you can continue using your computer for other things during the backup.

To continue, click either:

- **Continue Backup** to disregard your pause request and resume the backup
- **Stop Backup** to follow through with your pause request and stop the backup

## Advanced Backup Capabilities

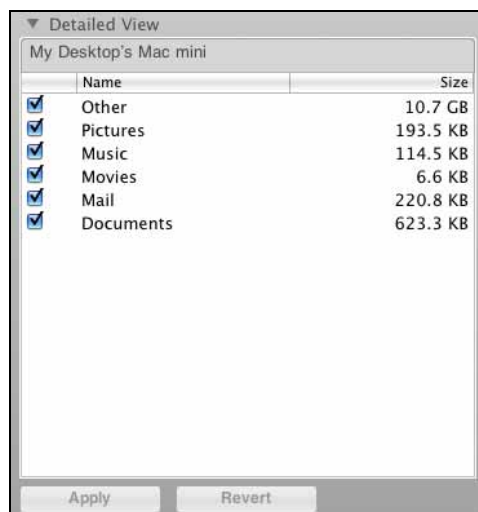
The advanced backup capabilities include:

- Selecting specific files to back up
- Changing the backup software settings:
  - Choosing the number of backup versions to keep
  - Pausing the backup until your computer is idle

## Selecting Specific Files to Back Up

To back up some of your computer files:

1. On the Backup screen (see Figure 6 on page 15), select **Detailed View** to open the backup files content box:



2. In the backup files content box:
  - Select the check boxes for the categories of files that you want to include in the backup
  - Clear the check boxes for the categories of files that you want to exclude from the backup
3. Click **Apply** to refresh the Content Gauge for your My Book drive.
4. Click **Run Backup** to back up the selected categories of files.

## Changing the Backup Software Settings

To optimize your backup, you can:

- Specify the number of backup versions to keep for each file
- Pause backups until your computer is idle

To configure these backup options:

1. Click the **Settings** tab to display the WD SmartWare Settings screen (see Figure 7).
2. Click **Set Up Software** to display the Software Settings screen (see Figure 8 on page 19).
3. See:
  - “Specifying the Number of Backup Versions” on page 19
  - “Pausing Backups Until Your Computer is Idle” on page 20

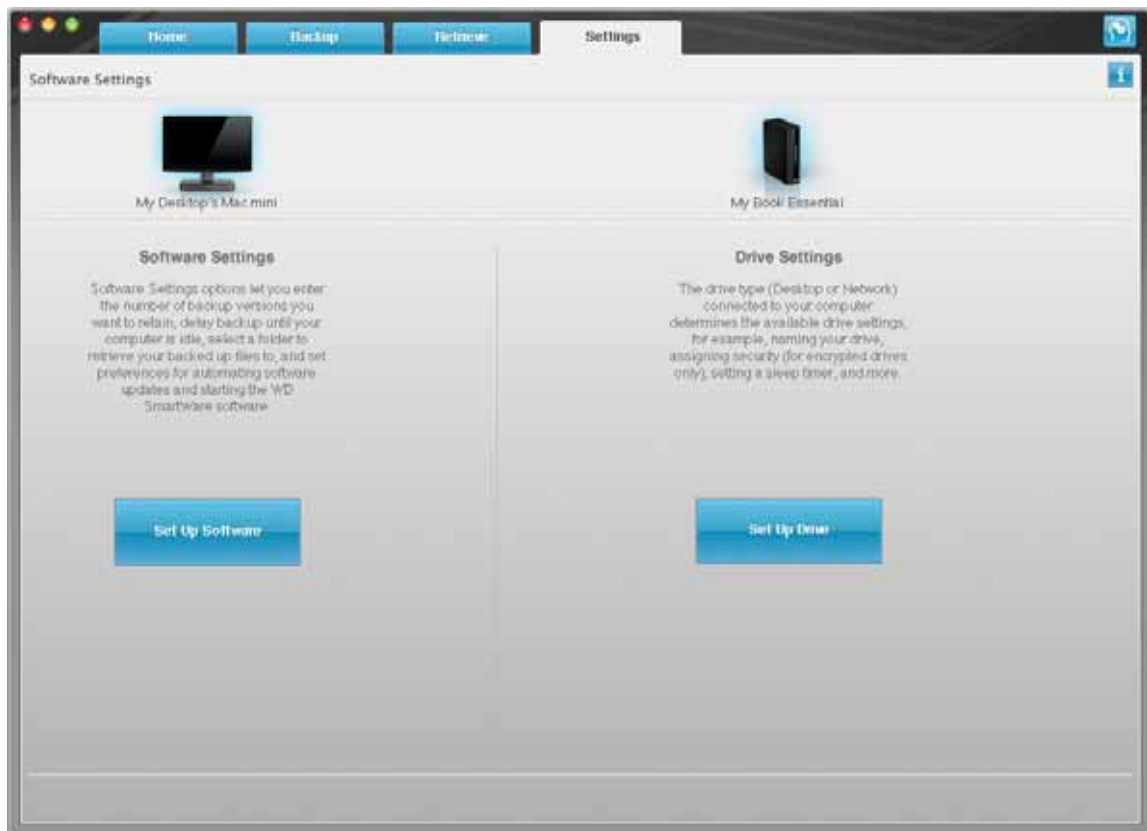


Figure 7. WD SmartWare Settings Screen

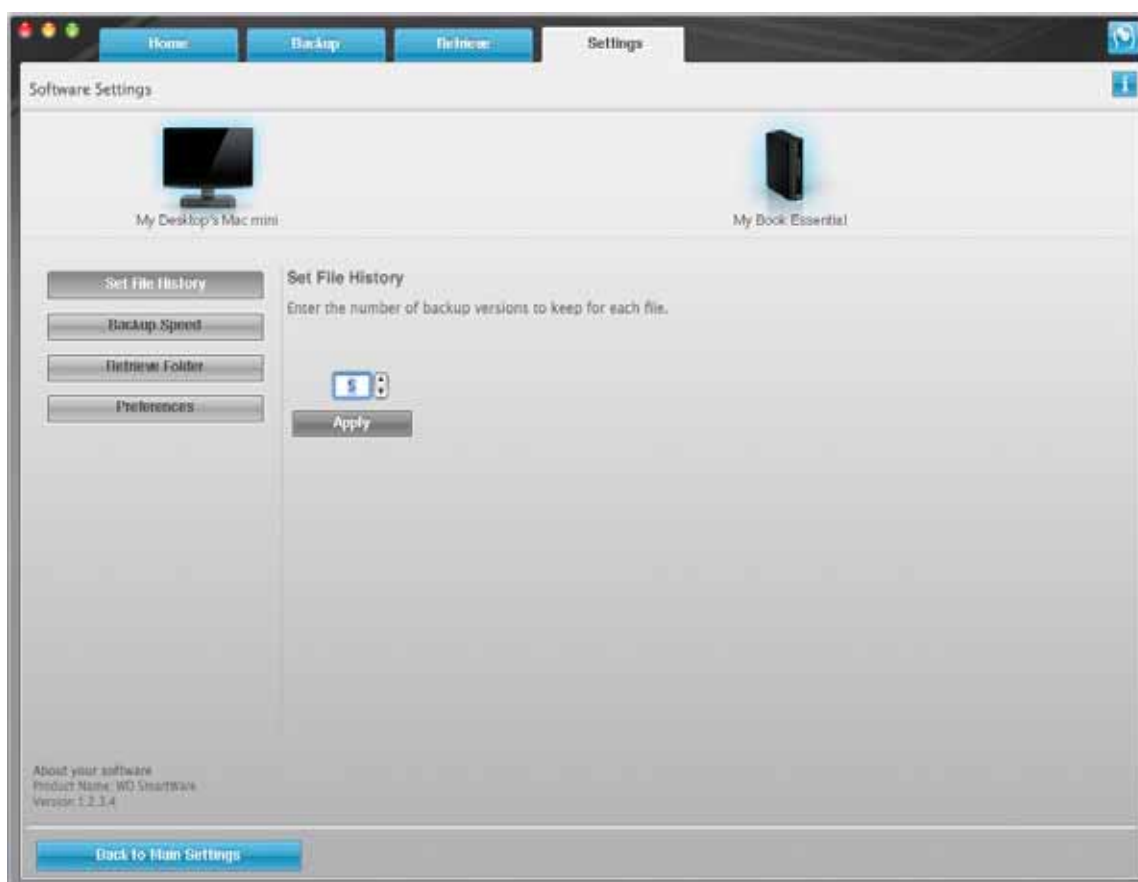


Figure 8. Software Settings Screen

**Specifying the Number of Backup Versions.** The WD SmartWare software can keep up to 25 older versions of each file. If you overwrite or delete a file by mistake, or want to see the file a couple of versions ago, the WD SmartWare software has a copy for you. You always have the most-recent specified number of versions of each file available for retrieves, and you can choose to keep from 1 to 25 versions.

Keeping more versions:

- Improves your ability to retrieve files from a longer back-in-time period
- Consumes more disk space

To specify the number of backup versions that you want to keep for each file:

1. On the Software Settings screen (see Figure 8), click **Set File History** to display the Set File History dialog:

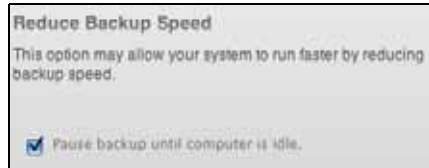


2. Use the selection box to specify the number of file versions that you want to keep, from 1 to 25.
3. Click **Apply** to save and implement the new number of backup versions.



**Pausing Backups Until Your Computer is Idle.** A large backup can take a lot of time, and can consume a lot of your system processing resources. The WD SmartWare software works in the background using minimal computer resources while you are working on your computer. If you want to pause all backup activity until your computer is idle, you can by enabling the Backup Speed option:

1. On the Software Settings screen (see Figure 8 on page 19), click **Backup Speed** to display the Reduce Backup Speed dialog:



2. Select or clear the **Pause backup until computer is idle** check box to enable or disable the Backup Speed option.

## Retrieving Backed Up Files

This chapter includes the following topics:

- [About Retrieving Files](#)
- [Retrieving Files or Folders](#)

### About Retrieving Files

The WD SmartWare software makes it easy for you to retrieve files that have been backed up on your My Book drive and copy them to either:

- Their original locations on your computer
- A special retrieve folder

Retrieve is generally a five-step process:

1. Choose the drive to retrieve files from on the Home screen.
2. Choose the backup you want to retrieve files from.
3. Choose whether the retrieved files will be copied to a special retrieval folder or to their original locations.
4. Specify what to retrieve, either files, folders, or everything.
5. Retrieve the files.

### Retrieving Files or Folders

After selecting the drive on the Home screen, you can retrieve individual files or complete folders from your My Book drive:

1. Click the **Retrieve** tab to display the Retrieve screen (see Figure 9 on page 22).
2. In the **Backed Up Volumes** box, select the WD SmartWare volume that you want to retrieve files from and click **Select Destination** to display the Select a destination for retrieved files screen (see Figure 10 on page 22).
3. On the Select a destination for retrieved files screen:

---

#### IF you want to copy your retrieved files to . . .

#### THEN . . .

Their original locations,

- a. Select the **To the Original Places** option.
- b. Click **Select Files** to display the Select content to retrieve... screen (Figure 11 on page 23) and proceed to step 4 on page 23.

A retrieved content folder,

- a. Select the **In a Retrieved Content Folder** option.
  - b. If you want to specify a different retrieve folder, click **Browse** and use the browse function to identify the new retrieve folder.
  - c. Click **Apply** to save and implement the new retrieve folder.
  - d. Click **Select Files** to display the Select content to retrieve... screen and proceed to step 4 on page 23.
-

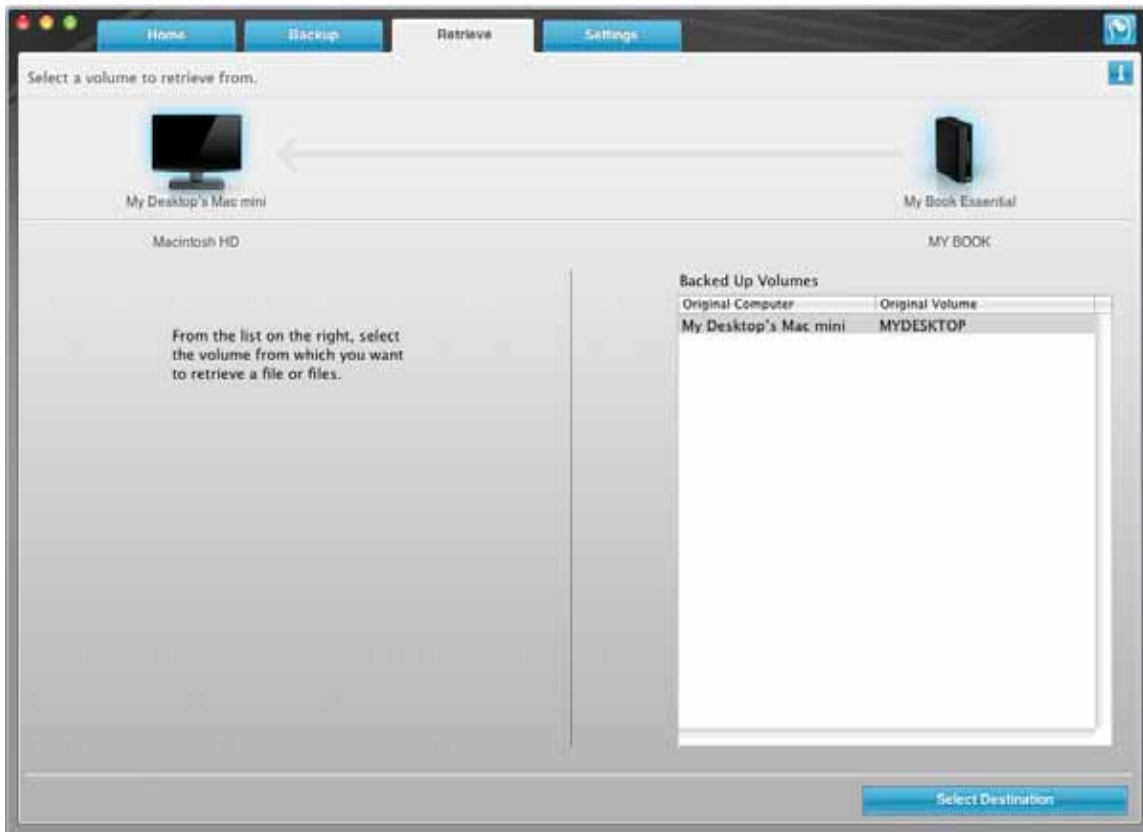


Figure 9. Retrieve Screen

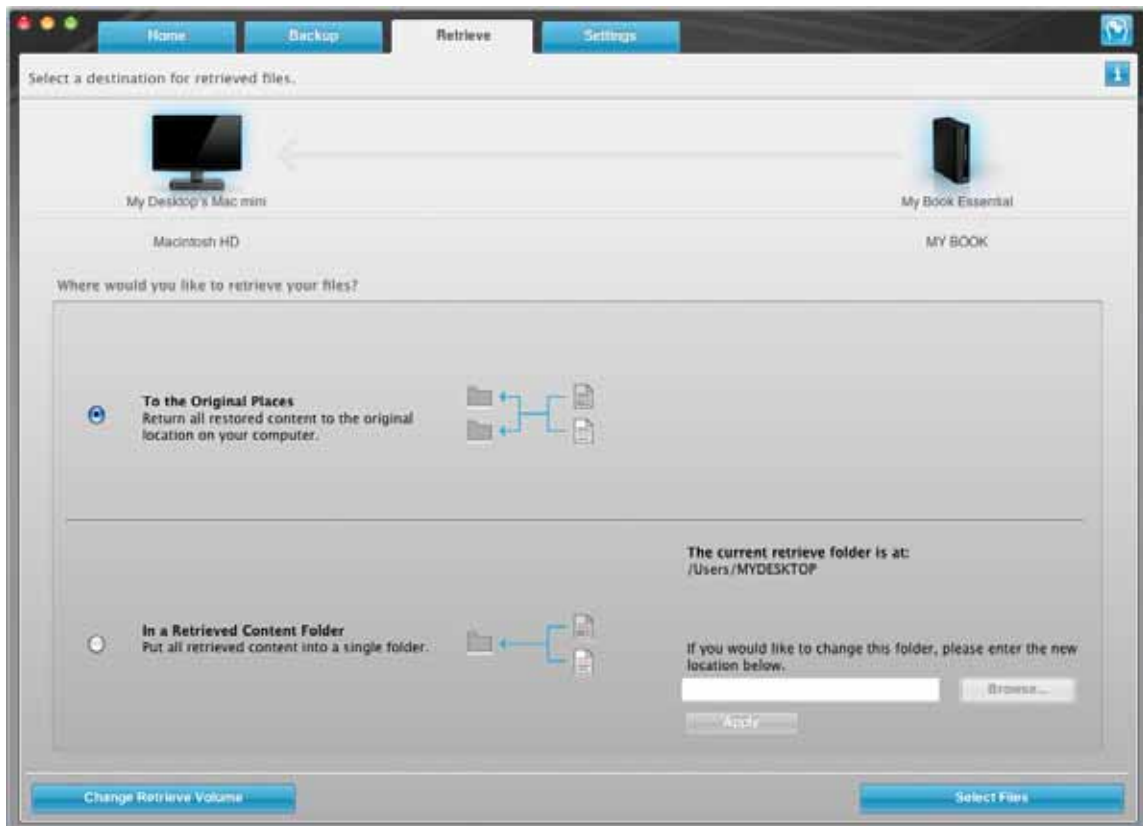


Figure 10. Select a Destination for Retrieved Files Screen



Figure 11. Select Content to Retrieve Screen

4. On the Select content to retrieve... screen:

**IF you want to retrieve . . . from the selected backed up volume,**

**THEN select the . . .**

All of the files

**Retrieve All Files** option and skip to step 6 on page 24.

Individual files or folders

**Retrieve Some Files** option to display the retrieve files selection box (see Figure 12) and proceed to step 5 on page 24.

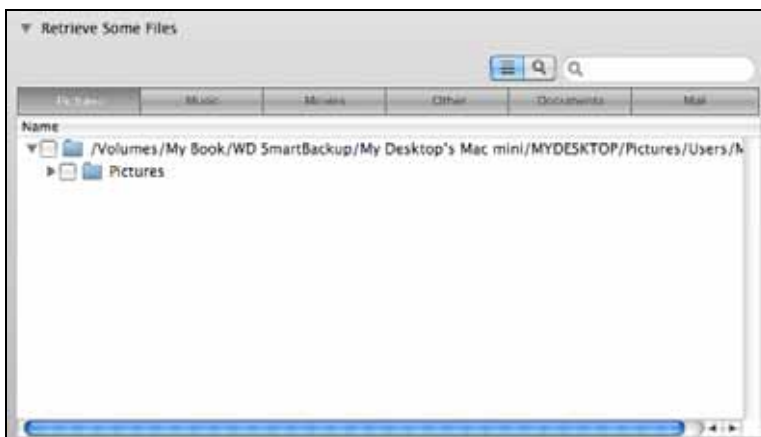


Figure 12. Retrieve Files Selection Box

5. In the retrieve files selection box, navigate through the folder structure to find the files you want. Also, you can use the search box by typing the name (or partial name) of the file or folder:
  - Click the appropriate file category button to list the files by category:
    - **Pictures**
    - **Music**
    - **Movies**
    - **Documents**
    - **Other**
    - **Mail**
  - Click the folder pointer to open a folder.
  - Type all or part of the file name in the search box, using the question mark (?) as a wildcard character, to find a file and press the **return** key to initiate the search. To eliminate the search filter, delete all of the text in the search box and press the **return** key.
  - Select the check box for the file or folder that you want to retrieve.
6. Click **Start Retrieving**
7. During the retrieve:
  - The Retrieve screen displays a progress bar and a message indicating the amount of data that has been copied to the specified retrieve location.
  - A **Cancel Retrieving** button is available for you to stop the retrieve.
8. A **Retrieval accomplished** message signifies completion of the retrieve. A **Partial retrieve accomplished** message means a file you selected for the retrieve was not copied to the specified retrieve location. In this case, either a:
  - **Files Not Retrieved** message provides the number of files that were not retrieved and a link to a failed-to-retrieve information screen. Click the **View files** link to see the list of files and the reasons they were not retrieved.
  - **Destination is full** message means that your computer does not have sufficient disk space to complete the retrieve.

## 5

## Locking and Unlocking the Drive

This chapter includes the following topics:

- [Password Protecting the Drive](#)
- [Unlocking the Drive](#)
- [Changing Your Password](#)
- [Turning Off the Drive Lock Feature](#)

### Password Protecting the Drive

You should password protect your drive if you are worried that someone else will gain access to your drive and you do not want them to see your files on the drive.

**CAUTION!** The WD SmartWare software uses your password to electronically lock and unlock your drive. If you forget your password, you will not be able to access the data that is on your drive or write new data to it. You will have to erase the drive before you can use it again.

You can reach the Set Security dialog for password management from the WD SmartWare software **Settings** tab, Drive Settings screen. There, you can:

- Create a password
- Change a password
- Eliminate the need for a password

To create a password and keep others from accessing the files on your drive

1. Click the **Settings** tab to display the Settings screen (see Figure 7 on page 18).
2. Click **Set Up Drive** to display the Drive Settings screen (see Figure 13 on page 26).
3. Click **Security** to display the Set Security dialog:

4. Type your password in the **Choose a password** box.
5. Retype your password in the **Verify password** box.

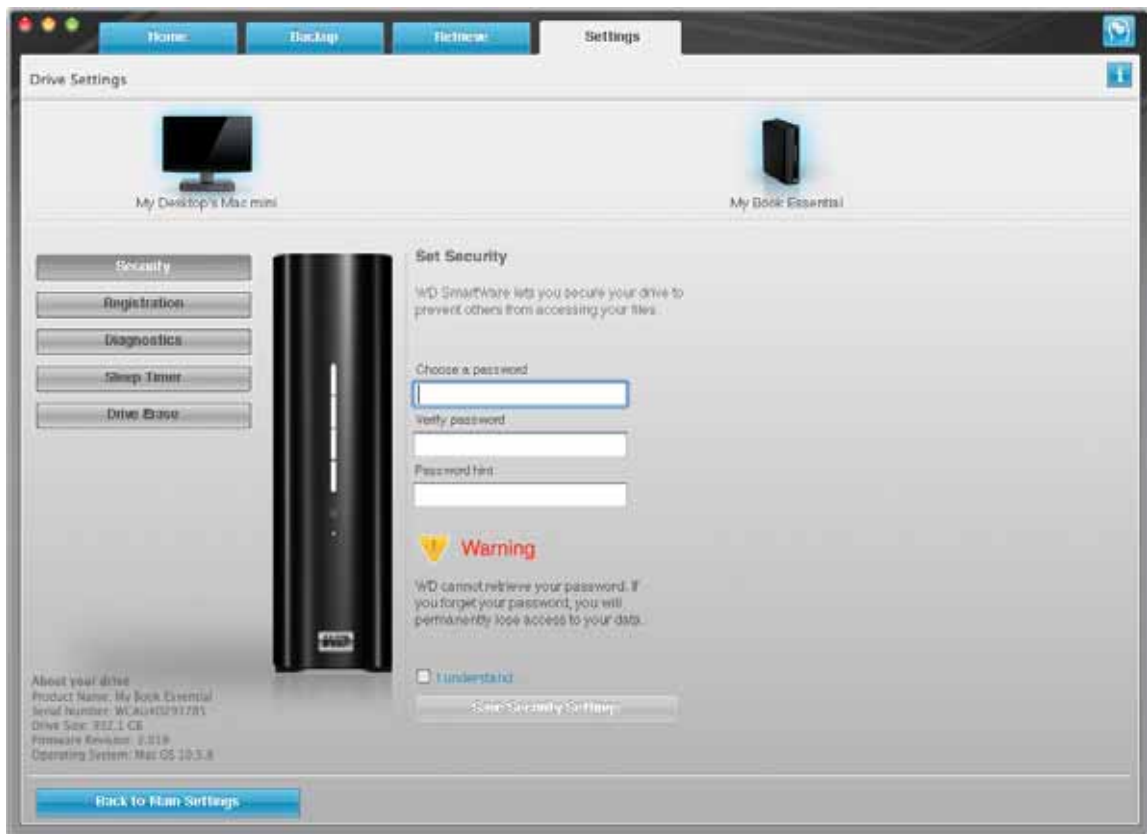


Figure 13. Drive Settings Screen

6. Type a hint to help remind yourself of your password in the **Password hint** box.
7. Read the warning about the possibility of data loss if you forget your password.
8. Click the **I understand** check box to signify that you accept the risk.
9. Click **Save Security Settings** to save your password and enable password protection for your drive.

**CAUTION!** After creating a password, the drive remains *unlocked* for as long as you continue your current work session. Then, the WD SmartWare software:

- Locks the drive when you shut down your computer, disconnect your drive, or—depending on its configuration—your computer goes into the sleep mode
- Requires you to type your password to unlock the drive when you restart your computer or reconnect your drive

## Unlocking the Drive

After you have created a password to keep others from accessing the files on your drive, you will have to type your password to unlock the drive whenever:

- You shut down and restart your computer
- You disconnect and reconnect the drive to your computer
- Depending on its configuration, your computer exits the sleep mode

You will have to do this even if you do not have the WD SmartWare software installed on your computer.

## Unlocking the Drive with the WD SmartWare Software

Whenever you shut down and restart your computer, or disconnect and reconnect the drive to your computer, the WD SmartWare software displays a **Drive is locked** message in place of the Content Gauge for your My Book drive:



The procedure for unlocking your drive with the WD SmartWare software can be automatic or manual, depending on whether the **Please provide your password** prompt appears or not.

**Automatically.** Whenever the WD SmartWare software displays the WD SmartWare drive unlock screen:



To unlock your drive:

1. Type your password in the **Password** box.
2. Click **Unlock** to unlock your drive and enable the WD SmartWare software.

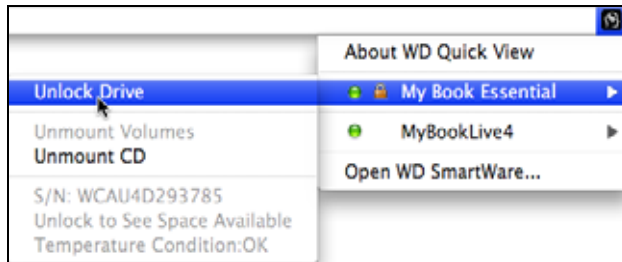
**Manually.** If the WD SmartWare software does not display the WD SmartWare drive unlock screen, you can use either the:

- WD Unlocker VCD as described in “Unlocking the Drive Without the WD SmartWare Software” on page 28
- WD SmartWare icon



To unlock the drive manually, using the WD SmartWare icon:

1. Click the WD SmartWare icon in the bar at the top-right corner of the screen.
2. Select the My Book drive and then click **Unlock Drive**:



3. Type your password in the **Password** box and click **Unlock** on the WD SmartWare Drive Unlock utility screen:



4. At the **Your drive is now unlocked** prompt, click **Exit** to close the WD SmartWare Drive Unlock utility screen.

## Unlocking the Drive Without the WD SmartWare Software

Whenever you connect your password-protected drive to a computer that does not have the WD SmartWare software installed, you can use the WD SmartWare Drive Unlock utility to unlock the drive there. The WD SmartWare software provides the Drive Unlock utility on a “virtual” CD drive (VCD) that appears on your desktop:



To unlock the drive without the WD SmartWare software installed:

1. Double-click the WD Unlocker VCD icon and double-click the Drive Unlock icon on the screen that appears:



2. Type your password in the **Password** box and click **Unlock** on the WD SmartWare Drive Unlock utility screen:



3. At the **Your drive is now unlocked** prompt, click **Exit** to close the WD SmartWare Drive Unlock utility screen.

## Changing Your Password

To change your password:

1. Click **Security** on the Drive Settings screen (see Figure 13 on page 26) to display the Your Drive is Secure dialog:



2. Type your current password in the **Password** box.
3. Select the **Change password** option.
4. Type your new password in the **Choose a password** box.
5. Retype your new password in the **Verify password** box.
6. Type a hint to help remind yourself of your new password in the **Password hint** box.
7. Click **Update Security Settings** to change your password.

## Turning Off the Drive Lock Feature

To remove password protection from your drive:

1. Click **Security** on the Drive Settings screen (see Figure 13 on page 26) to display the Your Drive is Secure dialog:



2. Type your password in the **Password** box.
3. Select the **Remove security** option.
4. Click **Update Security Settings** to remove password protection from your drive and redisplay the Set Security dialog.

## 6

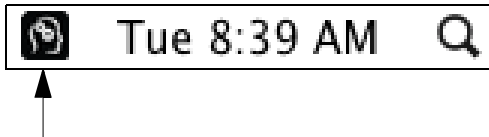
## Managing and Customizing Your Drive

This chapter includes the following topics:

- [Using the WD SmartWare Icon](#)
- [Customizing Your Software Settings](#)
- [Customizing Your Drive Settings](#)
- [Uninstalling the WD SmartWare Software](#)
- [Restoring the WD SmartWare Software and Disk Image](#)

### Using the WD SmartWare Icon

After you have installed the WD SmartWare software, the WD SmartWare icon displays in the bar at the top-right corner of the screen.



By clicking the icon you can:

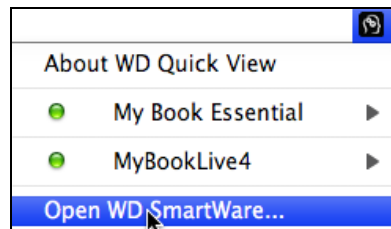
- Open the WD SmartWare software
- Check the drive status
- Safely dismount the drive

The following sections describe how to use the icon and other ways to do these things.

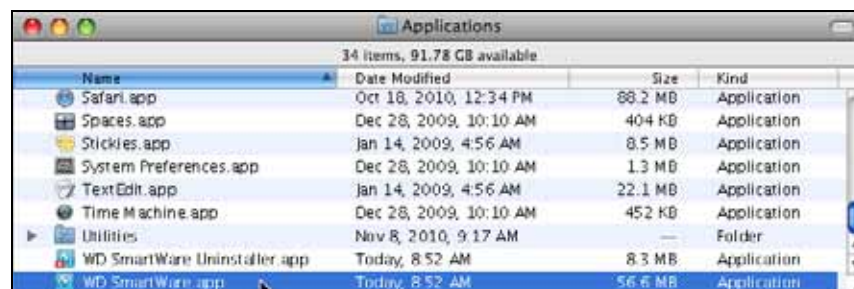
### Opening the WD SmartWare Software

If the WD SmartWare software does not open automatically, you can restart it by:

- Clicking the WD SmartWare icon and selecting **Open WD SmartWare**:



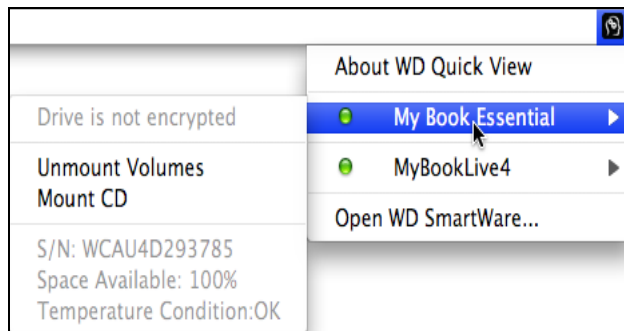
- Double-clicking **WD SmartWare** in the Applications list:



## Checking Drive Status

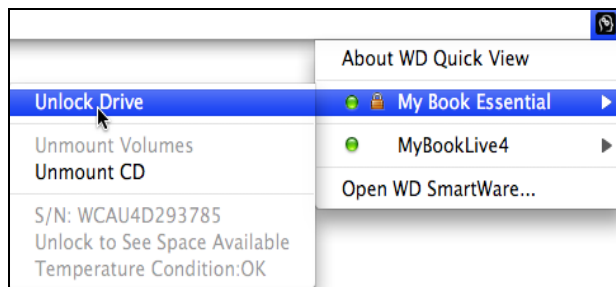
Use the WD SmartWare icon to determine whether the drive is locked (encrypted), how full the drive is, the drive's serial number, and the temperature condition of the drive:

1. Click the WD SmartWare icon to display a list of drives and select the My Book drive:



2. If the drive is unlocked (not encrypted) the submenu shows the serial number of the drive, the space available, and temperature condition.

If the drive is locked:



- a. Click **Unlock Drive** on the submenu to display the WD SmartWare Drive Unlock utility screen:



- b. Type your password in the **Password** box and click **Unlock**.
- c. At the **Your drive is now unlocked** prompt, click **Exit** to close the WD SmartWare Drive Unlock utility screen.
- d. Repeat step 1 to see the drive status.

## Safely Dismounting the Drive

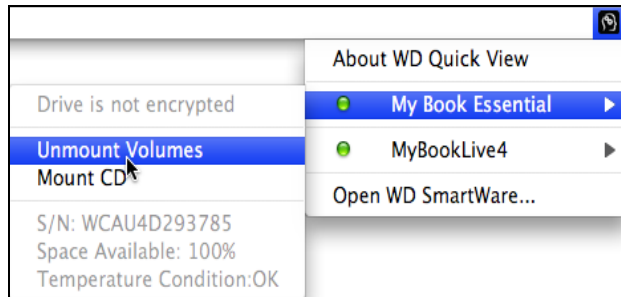
You can safely dismount the drive using either the:

- WD SmartWare icon
- My Book icon
- Drive power button

**CAUTION!** To prevent data loss, close all active windows and applications before shutting down or disconnecting the drive.

**Using the WD SmartWare Icon.** To safely dismount the drive using the WD SmartWare icon:

1. Click the WD SmartWare icon to display a list of drives.
2. Select the My Book drive and on the submenu select **Unmount Volumes**:



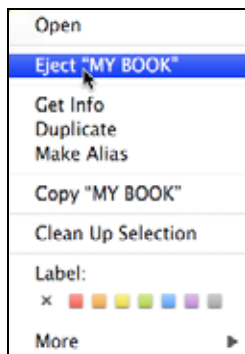
If the drive has more than one volume, a prompt asks you to select the volume.

You might hear the drive power down.

3. Wait for the drive icon to disappear from the desktop before disconnecting the drive.

**Using the My Book Icon.** To safely dismount the drive using the My Book icon:

1. Right- or control-click the My Book icon on the desktop and click **Eject "MY BOOK"**:



You might hear the drive power down.

2. Wait for the drive icon to disappear from the desktop before disconnecting the drive.

**Using the Drive Power Button.** To safely dismount the drive using the drive power button:

1. Press the power button on the back of the My Book drive.

You might hear the drive power down.

2. Wait for the drive icon to disappear from the desktop before disconnecting the drive.

## Customizing Your Software Settings

The WD SmartWare software makes it easy for you to quickly customize its own software settings for the best possible performance with your drive by:

- Specifying the number of backup versions that you want to keep for each file
- Inhibiting backups until times when your computer is idle
- Specifying a unique folder to store files retrieved from your drive
- Automatically checking for WD SmartWare software updates

To customize your WD SmartWare software settings for the best possible performance with your drive, on the Software Settings screen (see Figure 8 on page 19):

IF you want to . . .	THEN click . . .	AND see . . .
Change the number of backup versions to keep for each file,	<b>Set File History</b>	“Specifying the Number of Backup Versions” on page 19.
Enable anytime backups or inhibit them until your computer is idle,	<b>Backup Speed</b>	“Pausing Backups Until Your Computer is Idle” on page 20.
Specify a path to a different retrieve folder,	<b>Retrieve Folder</b>	“Specifying a Different Retrieve Folder” on page 34.
Change the options that whenever you reconnect your My Book drive to your computer: <ul style="list-style-type: none"> <li>• Display the WD SmartWare Home screen</li> <li>• Check for software updates</li> </ul>	<b>Preferences</b>	“Setting the Preferences Options” on page 35.

### Specifying a Different Retrieve Folder

When you start a retrieve, you can choose whether you want to store the retrieved files in either:

- Their original locations on your computer
- A Retrieved Content folder

By default, the WD SmartWare software creates and uses a Retrieved Content subfolder in your MYDESKTOP folder. To specify a different folder:

1. Either create a new folder or determine which existing folder you want to use.
2. On the Software Settings screen (see Figure 8 on page 19), click **Retrieve Folder** to display the Set Retrieve Folder dialog:



3. Click **Browse** and use the browse function to identify the new retrieve folder.
4. Click **Apply** to save and implement the new retrieve folder.

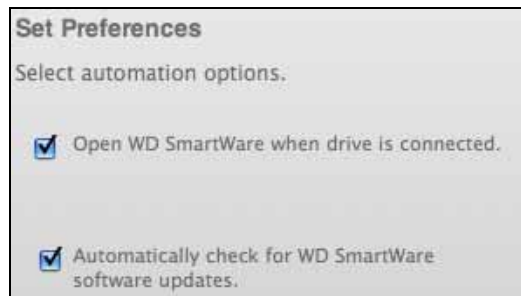
## Setting the Preferences Options

When enabled, each time you reconnect your My Book drive to your computer, the Preferences options:

- Display the WD SmartWare Home screen.  
This is the default configuration of the WD SmartWare software, and it is recommended when you routinely perform a number of backups or retrieves each day. Otherwise, you might want to disable this option and open the WD SmartWare Home screen whenever you need it.
- Check for software updates.  
This ensures that you are always using the most-recent software version.

To enable or disable the Preferences options:

1. On the Software Settings screen (see Figure 8 on page 19), click **Preferences** to display the Set Preferences dialog:



2. Select or clear the check boxes to enable or disable the Preferences options:
  - **Open WD SmartWare when drive is connected**
  - **Automatically check for WD SmartWare software updates**

## Customizing Your Drive Settings

The WD SmartWare software makes it easy for you to quickly customize the settings of your drive for the best possible performance.

- Security—Create, modify, and disable passwords that keep others from accessing the files on your drive.
- Registration—Register your drive to receive free technical support during the warranty period and find out about software updates, product enhancements, and price discount opportunities.
- Diagnostics—Run diagnostics and status checks to make sure your drive is working properly.
- Sleep Timer—Turn your drive off during periods of extended inactivity to conserve power and extend the life of the drive.
- Drive Erase—Erase all of the contents on the drive, including any password that has been set.



To customize your drive settings for the best possible performance with the WD SmartWare software, on the Drive Settings screen (see Figure 13 on page 26):

IF you want to . . .	THEN click . . .	AND see . . .
Use a password to keep others from accessing the files on your drive,	<b>Security</b>	“Password Protecting the Drive” on page 25.
Change your password,	<b>Security</b>	“Changing Your Password” on page 29.
Remove password protection from your drive,	<b>Security</b>	“Turning Off the Drive Lock Feature” on page 30.
Register your drive to receive free technical support during the warranty period and be kept up-to-date on the latest WD products,	<b>Registration</b>	“Registering the Drive” on page 36.
Run drive diagnostics and status checks,	<b>Diagnostics</b>	“Checking Drive Health” on page 42.
Specify an inactive time interval to turn off your drive,	<b>Sleep Timer</b>	“Setting the Drive Sleep Timer” on page 37.
Erase your drive so you can retrieve the space and start over with a fresh set of backups,	<b>Drive Erase</b>	“Erasing the Drive” on page 38.

## Registering the Drive

The WD SmartWare software uses your computer’s Internet connection to register your drive. To register your drive to receive free technical support during the warranty period and be kept up-to-date on the latest WD products:

1. Make sure that your computer is connected to the Internet.
2. On the Drive Settings screen (see Figure 13 on page 26), click **Registration** to display the Register Drive dialog:

3. Type your first name in the **First name** box.
4. Type your last name in the **Last name** box.
5. Type your e-mail address in the **E-mail address** box.
6. Select your language in the **Preferred language** box.
7. Select or clear the **Yes, I want to receive communication...** check box to specify whether or not you want to receive e-mail notifications about software updates, product enhancements, and price discount opportunities.
8. Click **Register Drive** to register your drive.

## Setting the Drive Sleep Timer

The drive sleep timer turns off the power to your drive after a certain period of inactivity to conserve power and minimize long-term wear on the drive.

To specify the inactivity period for the sleep timer:

1. On the Drive Settings screen (see Figure 13 on page 26), click **Sleep Timer** to display the Set Sleep Timer dialog:



2. In the **Sleep Timer** box, select the inactivity time interval at which you want to turn off the drive.
3. Click **Set Timer** to save and implement your sleep timer selection.

## Erasing the Drive

**CAUTION!** Erasing the drive permanently deletes all of the data on the drive. Always make sure that you no longer need any of the data on the drive before erasing it.

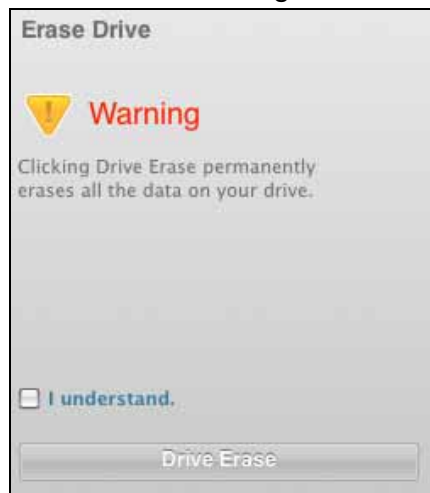
*Note:* Erasing the drive also deletes the WD SmartWare software and all of the support files, utilities, online help and user manual files. You can download these to restore your My Book to its original configuration after erasing the drive.

The WD SmartWare software provides two ways to erase the drive, depending on whether it is locked or not:

IF the drive is . . .	AND you . . .	THEN see . . .
Not locked,	Want to erase the drive,	“Using the Drive Settings Drive Erase Function” on page 38”
Locked,	Have forgotten or lost your password and <i>must</i> erase the drive,	“Using the Drive Unlock Utility” on page 39.

**Using the Drive Settings Drive Erase Function.** To erase your My Book when the drive is not locked:

1. On the Drive Settings screen (see Figure 13 on page 25), click **Drive Erase** to display the Erase Drive dialog:



2. Read the warning about the loss of data if you erase your drive.
3. Click the **I understand** check box to signify that you accept the risk.
4. Click **Drive Erase** to erase your drive.

After the drive erase operation completes, go to <http://support.wdc.com> and see Knowledge Base Answer ID #5419 for information about downloading and restoring the WD SmartWare software and disk image on your My Book drive.

*Note:* Erasing your drive also removes your password. If you still want to use a password to protect your drive, you will need to re-create it after restoring the WD SmartWare software and disk image. (See “Password Protecting the Drive” on page 25.)

**Using the Drive Unlock Utility.** To erase your My Book when the drive is locked and you have forgotten or lost your password:

1. If you do not see a prompt to provide your password, then either:
  - Click the My Book image above the **Drive is locked** prompt to display the WD SmartWare drive unlock screen:



- Double-click the WD Unlocker virtual CD icon and double-click the Drive Unlock icon on the screen that appears:



The WD SmartWare Drive Unlock utility screen displays:



2. Make five attempts to unlock the drive by:
  - a. Typing a password in the **Password** box.
  - b. Clicking **Unlock**.
3. The fifth invalid password attempt displays the **Too Many Password Attempts** prompt:



4. Read the warning about the loss of data if you erase your drive.

5. Click the **I understand** check box to signify that you accept the risk.
6. Click **Format** to erase your drive.

After the drive erase operation completes, go to <http://support.wdc.com> and see Knowledge Base Answer ID #5419 for information about downloading and restoring the WD SmartWare software and disk image on your My Book drive.

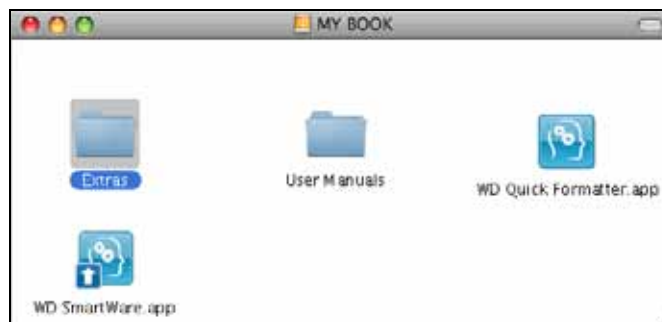
*Note:* Erasing your drive also removes your password. If you still want to use a password to protect your drive, you will need to re-create it after restoring the WD SmartWare software and disk image. (See “Password Protecting Your Drive” on page 24.)

## Uninstalling the WD SmartWare Software

**Important:** You can easily uninstall the software. However, you will need to restart the backup job manually after reinstalling the software as uninstalling deletes all existing backup job configurations. (See “Backing Up Your Computer Files” on page 14.)

To uninstall the WD SmartWare software:

1. Double-click the My Book icon on the desktop or WD SmartWare in the Applications list and double-click the Extras folder on the screen that displays:



2. Double-click the WD SmartWare Uninstaller icon:



3. Click **Uninstall** on the WD SmartWare Uninstaller screen:



4. Type the password that you normally use to access the computer in the **Password** box and click **OK**:



5. When the uninstall completes, click **Exit** to close the WD SmartWare Uninstall screen:



## Restoring the WD SmartWare Software and Disk Image

In addition to deleting all of the data on your My Book drive, erasing or reformatting the drive also removes the WD SmartWare software and all of the support files, utilities, online help and user manual files.

If you ever need to remove and reinstall the WD SmartWare software on your computer, or move the drive to another computer and install the software there, you will need to restore the WD SmartWare software and disk image on your My Book drive. To do this, after you have erased or reformatted the drive, go to <http://support.wdc.com> and see Knowledge Base Answer ID #5419.

## 7

## Checking Drive Health

The files on your My Book drive are important to you. The WD SmartWare software has several built-in diagnostic tools to help make sure that your drive is performing well. Run the following tests if you are concerned that your drive is not operating properly:

Diagnostic Tool	Description
Quick S.M.A.R.T. Status Check	<p>S.M.A.R.T. is a failure-prediction function that continuously monitors key internal performance attributes of the drive. A detected increase in drive temperature, noise, or read/write errors, for example, can provide an indication that the drive might be approaching a serious failure condition. With advanced warning, you could take precautionary measures, like moving your data to another drive, before a failure occurs.</p> <p>The result of a quick S.M.A.R.T. status check is a pass or fail evaluation of the drive's condition.</p> <p>The S.M.A.R.T. status check completes within a second or two.</p>
Quick Drive Test	<p>Your My Book drive has a built-in Data Lifeguard diagnostic utility that tests the drive for error conditions. The quick drive test checks the drive for major performance problems.</p> <p>The result of a quick drive test is a pass or fail evaluation of the drive's condition.</p> <p>The quick drive test can take several minutes to complete.</p>
Complete Drive Test	<p>The most comprehensive drive diagnostic is the complete drive test. It methodically tests each sector for error conditions, and inserts bad-sector markers as required.</p> <p>The complete drive test can take several hours to complete, depending on the size and data configuration of your drive.</p>

The best time to run the drive diagnostics and status checks is on a regular basis, before you encounter any problems with your drive. And, because they are so fast, running the quick S.M.A.R.T. status check and the quick drive test provides a high level of assurance with minimal inconvenience. Then, run all three whenever you encounter disk error conditions when backing up or retrieving files.

To run drive diagnostics and status checks:

1. On the Drive Settings screen (see Figure 13 on page 26), click **Diagnostics** to display the Diagnostics dialog:



2. Click the button for the test that you want to run:
  - **Quick SMART Status**
  - **Quick Drive Test**
  - **Complete Drive Test**



## Using the Drive with Windows

The My Book drive is preformatted as a single HFS+J partition for compatibility with Mac OS X operating systems. To use the drive with Windows operating systems, you must first:

- Reformat the drive to a single NTFS partition
- Restore the WD SmartWare software and disk image

This chapter includes the following topics:

- [Reformatting the Drive](#)
- [Restoring the WD SmartWare Software and Disk Image](#)
- [Connecting the Drive](#)
- [Getting Started with the WD SmartWare Software](#)
- [Using the WD SmartWare Icon](#)
- [Enabling the Backup and Retrieve Functions](#)
- [Unlocking the Drive](#)
- [Uninstalling the WD SmartWare Software](#)
- [Getting Started Without the WD SmartWare Software](#)

### Reformatting the Drive

---

**CAUTION!** Reformatting the drive erases all its contents. If you have already saved files on the drive, be sure to back them up before reformatting it.

---

Go to <http://support.wdc.com> and refer to the Knowledge Base Answer ID 3865 for information about reformatting a Mac drive.

Also, see “Troubleshooting” on page 55 for more information about reformatting a drive.

### Restoring the WD SmartWare Software and Disk Image

After you have reformatted your My Book drive for use on Windows computers, go to <http://support.wdc.com> and see Knowledge Base Answer ID #5419 for information about downloading and restoring the Windows version of the WD SmartWare software and disk image.

### Connecting the Drive

After you have reformatted your My Book drive for use on a Windows computer and downloaded and restored the Windows version of the WD SmartWare software and disk image:

1. Turn on your Windows computer.
2. Connect the My Book drive to your computer as shown in Figure 4 on page 6.

3. If a Found New Hardware screen appears, click **Cancel** to close it.  
The WD SmartWare software that is on the drive installs the proper driver for your My Book drive.
4. Verify that the My Book drive appears under My Computer in Windows Explorer.
5. Several different screens might also appear, depending on your computer's operating system:

<b>IF your operating system is . . .</b>	<b>THEN . . .</b>
Windows XP	Proceed to step 6.
Windows Vista or Windows 7	Skip to step 8.

6. For Windows XP, one or two screens might appear, depending on whether the AutoRun (AutoPlay) function is enabled or disabled:

<b>IF AutoRun (AutoPlay) is . . . on your computer,</b>	<b>THEN . . .</b>
Enabled	Proceed to step a.
Disabled	Skip to step b.

- a. On Windows XP with AutoRun (AutoPlay) enabled, the Welcome to WD SmartWare screen displays (see Figure 14 on page 46).
  - b. On Windows XP with AutoRun (AutoPlay) disabled, click to open the My Book drive listing in Windows Explorer and double-click the WD SmartWare application file to display the Welcome to WD SmartWare screen (see Figure 14 on page 46).
7. Continue to "Getting Started with the WD SmartWare Software" in the next section.  
If you do not want to install the WD SmartWare software, go to "Getting Started Without the WD SmartWare Software" on page 56 instead.
  8. For Windows Vista or Windows 7, two or three screens might appear, depending on whether the AutoRun (AutoPlay) function is enabled or disabled:

<b>IF AutoRun (AutoPlay) is . . . on your computer,</b>	<b>THEN . . .</b>
Enabled	Proceed to step a.
Disabled	Skip to step b.

- a. On Windows Vista or Windows 7 with AutoRun (AutoPlay) enabled, click **Open folder to view files** on the AutoPlay screen and double-click the WD SmartWare application file to display the Welcome to WD SmartWare screen (see Figure 14 on page 46).
- b. On Windows Vista or Windows 7 with AutoRun (AutoPlay) disabled, open **Computer**, click to open the My Book drive listing in Windows Explorer and double-click the WD SmartWare application file to display the Welcome to WD SmartWare screen (see Figure 14 on page 46).



*Note:* If a Flash Player is installed on your computer, the screen is animated.

Figure 14. Welcome to WD SmartWare Screen

- Continue to “Getting Started with the WD SmartWare Software” in the next section. If you do not want to install the WD SmartWare software, go to “Getting Started Without the WD SmartWare Software” on page 56 instead.

## Getting Started with the WD SmartWare Software

To get started with WD SmartWare software:

- The **What would you like to do?** prompt on the Welcome to WD SmartWare screen provides three options for installing the WD SmartWare software:

IF you want to install . . .	THEN click the . . .
The full version of the WD SmartWare software, with continuous automatic backup, retrieve, drive lock password protection, and drive management features and: <ul style="list-style-type: none"> <li>Run your first backup,</li> <li>Password protect or register your drive,</li> </ul>	<b>Install WD SmartWare</b> button.
Only the WD SmartWare software drive lock password protection and drive management features, and password protect or register your drive,	<b>Install Drive Settings</b> button.
The full version of the WD SmartWare software and retrieve files that you have already backed up to your My Book drive on another computer,	<b>Retrieve a backup</b> link.

- Read the license agreement and click **Accept** to continue.
- Wait for the software installation to complete. This could take several minutes.

4. After the software installation completes:

---

**IF you clicked . . . at step 1, THEN the WD SmartWare software displays . . .**

---

<b>Install WD SmartWare</b>	<p>The initial Backup screen for performing your first backup (see Figure 15 on page 48). Here you can either:</p> <ul style="list-style-type: none"> <li>• Run your first backup—See “Backing Up Your Computer Files” on page 13 before clicking <b>Start Backup</b> and then proceed to step 5.</li> <li>• Skip the backup and display the WD SmartWare initial Drive Settings screen (Figure 16 on page 49)—Click <b>Skip Backup</b> and: <ul style="list-style-type: none"> <li>a. See: <ul style="list-style-type: none"> <li>• “Password Protecting the Drive” on page 25</li> <li>• “Registering the Drive” on page 36</li> </ul> <p><i>Note:</i> In this case, the WD SmartWare initial Drive Settings screen includes a <b>Return to Backup</b> button for returning to the initial Backup screen.</p> </li> <li>b. Skip to step 6 on page 48.</li> </ul> </li> </ul>
<b>Install Drive Settings</b>	<p>The drive management initial Drive Settings screen for securing and registering your drive (Figure 16 on page 49).</p> <ul style="list-style-type: none"> <li>a. See: <ul style="list-style-type: none"> <li>• “Password Protecting the Drive” on page 25</li> <li>• “Registering the Drive” on page 36</li> </ul> </li> <li>b. Skip to step 7 on page 48.</li> </ul>
<b>Retrieve a backup</b>	<p>The WD SmartWare Home screen for accessing all WD SmartWare functions:</p> <ul style="list-style-type: none"> <li>a. See Figure 17 on page 49 and “Retrieving Backed Up Files” on page 21.</li> <li>b. This completes the getting started procedure after selecting <b>Retrieve a backup</b>.</li> </ul>

---

*Note:* The initial Backup and Drive Settings screens only appear one time—the first time you install the WD SmartWare software on your computer. After that, launching the software displays the Home screen so you can choose what you want to do.

5. After running your first backup:

- a. Click **Continue to Settings** to display the WD SmartWare initial Drive Settings screen (Figure 16 on page 49).
- b. See:
  - “Password Protecting the Drive” on page 25
  - “Registering the Drive” on page 36
- c. Click **Continue** to display the WD SmartWare Home screen (Figure 17 on page 49).

This completes the getting started procedure after selecting **Install WD SmartWare** and running your first backup.

6. After password protecting or registering your drive, click **Continue** to close the WD SmartWare initial Drive Settings screen and display the WD SmartWare Home screen (Figure 17 on page 49).

This completes the getting started procedure after selecting **Install WD SmartWare** and skipping the backup.

7. After password protecting or registering your drive, click **Finish** to close the drive management initial Drive Settings screen.

This completes the getting started procedure after selecting **Install Drive Settings**.

In this case:

- Opening the WD SmartWare software displays the drive management Home screen (see Figure 18 on page 50) with the **Settings** tab for performing all drive management functions (see “Customizing Your Drive Settings” on page 41).
- Clicking the **Settings** tab displays the drive management Drive Settings screen with a **Preferences** button that you can use to enable the WD SmartWare Backup and Retrieve functions (see Figure 19 on page 50 and “Enabling the Backup and Retrieve Functions” on page 53).

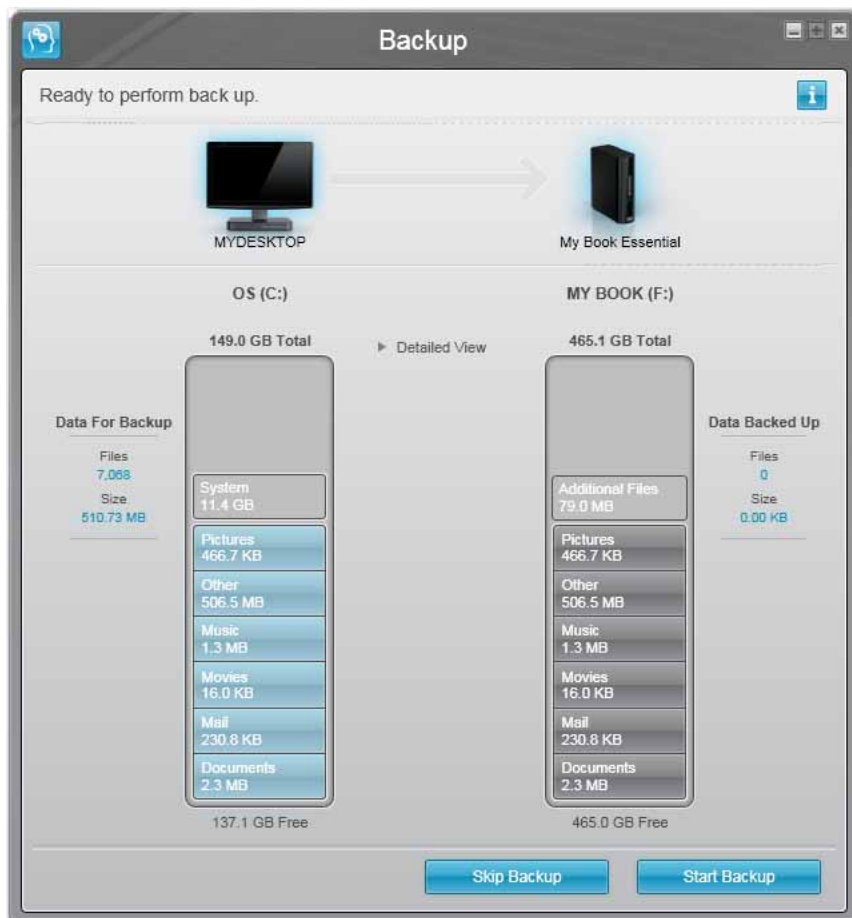


Figure 15. Initial Backup Screen



WD SmartWare Initial Drive Settings Screen



Drive Management Initial Drive Settings Screen

Figure 16. Initial Drive Settings Screens



Figure 17. WD SmartWare Home Screen

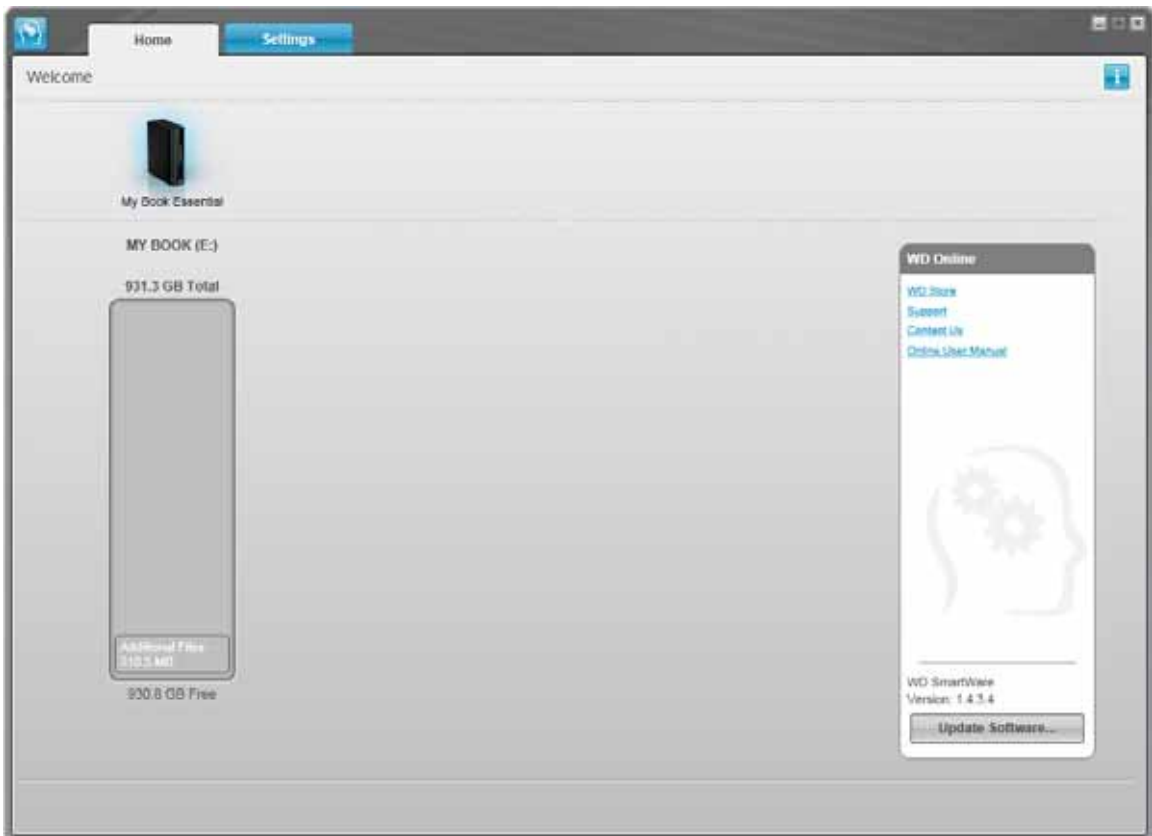


Figure 18. Drive Management Home Screen

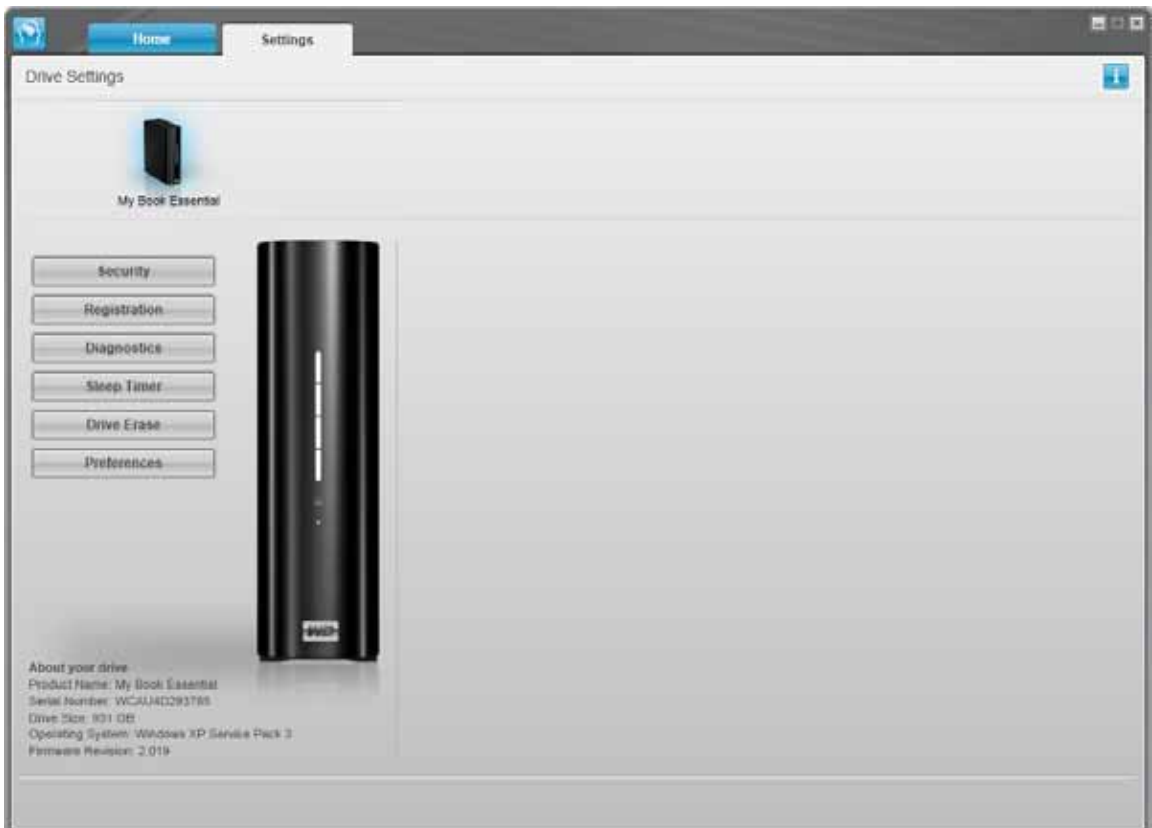


Figure 19. Drive Management Drive Settings Screen

## Using the WD SmartWare Icon

After you have installed the WD SmartWare software, the WD SmartWare icon displays in the Windows taskbar.



By clicking the icon you can:

- Open the WD SmartWare software
- Check the drive status
- Monitor icon alerts
- Safely disconnect the drive

The following sections describe how to use the icon and other ways to do these things.

### Opening the WD SmartWare Software

If the WD SmartWare does not start automatically, you can start it by:

- Clicking **Start > (All) Programs > WD SmartWare > WDSmartWare**
- Double-clicking the WD SmartWare icon in the taskbar

*Note:* You can also left- or right-click the WD SmartWare icon in the taskbar and select **WD SmartWare**.

The WD SmartWare or drive management Home screen displays.

In the Content Gauge for your computer's hard drive, all of your files that are available for backup are shown against a blue background in six categories where:

This file category	Includes files with these extensions
<b>Documents</b>	.doc, .txt, .htm, .html, .ppt, .xls, .xml, and other document extensions
<b>Mail</b>	.mail, .msg, .pst., and other mail extensions
<b>Music</b>	.mp3, .wav, .wma, and other music extensions
<b>Movies</b>	.avi, .mov, .mp4, and other movie extensions
<b>Pictures</b>	.gif, .jpg, .png, and other picture extensions
<b>Other</b>	Others that do not belong in the five main categories

For a complete list of all included file extensions, search for Answer ID 3644 in the WD Knowledge Base at <http://support.wdc.com>.



## Checking Drive Status

Hover the pointer over the WD SmartWare icon in the taskbar to see the drive capacity used and drive temperature condition, and to find out if the drive is locked:

WD Quick View			
Drive Name [Volumes]	Used	Locked	Temperature
● My Book Essential USB HDD [E:]	1%	No	OK

## Monitoring Icon Alerts

The WD SmartWare icon in the taskbar flashes to indicate drive status:

IF the WD SmartWare icon flashes . . .	THEN the drive might be . . .
Green and white,	Locked or in a format that the WD SmartWare software does not understand (non-Windows format in a Windows environment).
Red and white,	Overheated.  Power down the drive and let it cool for 60 minutes. Power it back on, and if the problem persists, contact WD Support.

## Safely Disconnecting the Drive

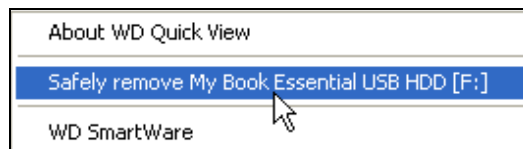
**CAUTION!** To prevent data loss, close all active windows and applications before shutting down or disconnecting the drive.

You can safely disconnect the drive from your computer by using either:

- The WD SmartWare icon in the taskbar
- The drive power button

**Using the WD SmartWare Icon.** To safely disconnect the drive using the WD SmartWare icon:

1. Right-click the WD SmartWare icon in the taskbar, and then click **Safely remove My Book Essential USB HDD**:



You might hear the drive power down.

2. Wait for the power/activity LED to turn off before disconnecting the drive.

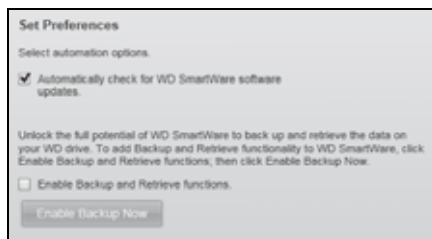
**Using the Drive Power Button.** To safely disconnect the drive using the drive power button:

1. Press the power button on the back of the My Book drive.  
You might hear the drive power down.
2. Wait for the power/activity LED to turn off before disconnecting the drive.

## Enabling the Backup and Retrieve Functions

If you selected **Install Drive Settings** at the **What would you like to do?** prompt on the Welcome to WD SmartWare screen and now want to enable the Backup and Retrieve functions:

1. On the drive management Drive Settings screen (see Figure 19 on page 50), click **Preferences** to display the Set Preferences dialog:



2. Select the **Enable Backup and Retrieve functions** check box.
3. Click **Enable Backup Now** to:
  - Add the **Backup** and **Retrieve** tabs to the Home screen display
  - Add the **Set Up Software** and **Set Up Drive** options to the Settings screen
  - Remove the **Preferences** option from the Drive Settings screen

## Unlocking the Drive

After you have created a password to keep others from accessing the files on your drive, you will have to type your password to unlock the drive whenever:

- You shut down and restart your computer
- You disconnect and reconnect the drive to your computer
- Your computer exits the sleep mode

You will have to do this even if you do not have the WD SmartWare software installed on your computer.

To unlock the drive, see:

- “Unlocking the Drive with the WD SmartWare Software” on page 54
- “Unlocking the Drive Without the WD SmartWare Software” on page 55

## Unlocking the Drive with the WD SmartWare Software

Whenever you shut down and restart your computer, or disconnect and reconnect the drive to your computer, the WD SmartWare software displays a **Drive is locked** message in place of the Content Gauge for your My Book drive:



To unlock the drive using the WD SmartWare software:

1. Click the My Book image above the **Drive is locked** message to display the WD SmartWare drive unlock screen:



2. Type your password in the **Password** box.
3. Click **Unlock** to unlock your drive and enable the WD SmartWare software.

## Unlocking the Drive Without the WD SmartWare Software

Whenever you connect your password-protected drive to a computer that does not have the WD SmartWare software installed, you can use the WD SmartWare Drive Unlock utility to unlock the drive there. The WD SmartWare software provides the Drive Unlock utility on a “virtual” CD drive that appears under My Computer in your Windows Explorer display.

To unlock the drive without the WD SmartWare software installed:

1. Start the WD SmartWare Drive Unlock utility by either:
  - Using your computer’s file management utility to open the WD Unlock virtual CD and double-clicking the Unlock application file
  - Clicking **Start > My Computer** and double-clicking the WD Unlock virtual CD icon under Devices with Removable Storage



2. Type your password in the **Password** box.
3. Click **Unlock** to unlock your drive.
4. At the **Your drive is now unlocked** prompt, click **Exit** to close the WD SmartWare Drive Unlock utility screen.

## Uninstalling the WD SmartWare Software

**Important:** You can easily uninstall the software. However, you will need to restart the backup job manually after reinstalling the software as uninstalling deletes all existing backup job configurations. (See “Backing Up Your Computer Files” on page 14.)

Use your operating system’s Add or Remove Programs function to uninstall the WD SmartWare software from your computer.

### Uninstalling on Windows XP Computers

1. Click **Start > Control Panel**.
2. Double-click **Add or Remove Programs**.
3. Select **WD SmartWare** and click **Remove**.
4. Click **Yes** at the **Are you sure...** prompt.

## Uninstalling on Windows Vista or Windows 7 Computers

1. Click **Start** > **Control Panel**.
2. Double-click **Programs and Features**.
3. Click **WD SmartWare** or the WD SmartWare icon and click **Uninstall/Change** at the top of the screen.
4. Click **Yes** at the **Do you wish to proceed...** prompt.

## Getting Started Without the WD SmartWare Software

If you do not install the WD SmartWare software, you can still use your My Book as an external hard drive. In this case, however, you will not be able to:

- Protect your data with automatic continuous backups (see “Backing Up Your Computer Files” on page 14)
- Retrieve earlier versions of lost, or damaged files (see “Retrieving Backed Up Files” on page 21)
- Secure your drive and all of the files on it with a password (see “Locking and Unlocking the Drive” on page 25)
- Customize your software and drive settings for the best possible performance (see “Managing and Customizing Your Drive” on page 31)
- Check the operational condition of your drive with built-in diagnostic features (see “Checking Drive Health” on page 42)

To forego these performance features and get started without installing the WD SmartWare software:

1. Click **Do Not Install** on the Welcome to WD SmartWare screen to display the **Continue without installing WD SmartWare?** prompt:



2. Click either:
  - **Continue without Install** if you still do not want to install the WD SmartWare software.
  - **Go Back** if you have changed your mind and *do* want to install the WD SmartWare software. In this case, go to “Getting Started with the WD SmartWare Software” on page 46.

## Troubleshooting

If you have problems installing or using your My Book drive, refer to this troubleshooting section or visit our support website at <http://support.wdc.com> and search the knowledge base for more help.

This chapter includes the following topics:

[Installing, Partitioning, and Formatting the Drive](#)  
[Frequently Asked Questions](#)

### Installing, Partitioning, and Formatting the Drive

How to	Answer ID
■ Partition, and format a WD drive on Windows (7, Vista, XP, 2000) and Mac OSX	3865
■ Reformat from Mac GPT to Windows XP NTFS	3645
■ Reformat the drive from Mac GPT to Windows 7 or Vista NTFS format	3647
■ Obtain and reinstall the original software included with this product	1425
■ Format a WD hard drive in FAT32 (for use in both Windows and MAC OSX)	291

*The FAT32 file system has a maximum individual file size of 4 GB and cannot create partitions larger than 32 GB in Windows. To create partitions larger than 32 GB in FAT32 when reformatting the drive, download the External USB/FireWire FAT32 Formatting Utility from <http://support.wdc.com/product/download>.*

*Windows users can avoid these size limitation by formatting the drive to NTFS using either the Windows Disk Management utility or similar third-party software. For further details, see:*

- Answer ID 291 at <http://support.wdc.com>
- Article IDs 314463 and 184006 at [support.microsoft.com](http://support.microsoft.com)
- The appropriate third-party software documentation or support organization

### Frequently Asked Questions

**Q:** How do I determine whether or not my system supports USB 2.0?

**A:** Refer to your USB card documentation or contact your USB card manufacturer.

*Note:* If your USB 2.0 controller is built into the system motherboard, be sure to install the appropriate chipset support for your motherboard. Refer to your motherboard or system manual for more information.

**Q:** What happens when a USB 2.0 device is plugged into a USB 1.1 port or hub?

**A:** USB 2.0 is backward compatible with USB 1.1. When connected to a USB 1.1 port or hub, a USB 2.0 device operates at the USB 1.1 full speed of up to 12 Mbps.

**Q:** *Why is the data transfer rate slow?*

**A:** Your system may be operating at USB 1.1 speeds due to an incorrect driver installation of the USB 2.0 adapter card or a system that does not support USB 2.0.

If your system includes a PCI slot, you can achieve Hi-Speed USB transfer rates by installing a USB 2.0 PCI adapter card. Contact the card manufacturer for installation procedures and more information.

*Note:* If an additional external drive is connected to the WD product, USB bandwidth is shared and may affect performance.

**Q:** *Why does the drive not power up?*

**A:** Be sure the drive is plugged in to a power source. A special cable may be needed for computers with limited bus power. For more information in the U.S., visit our Web site at [store.westerndigital.com](http://store.westerndigital.com). Outside the U.S., contact WD Technical Support in your region.

**Q:** *Why is the drive not recognized under My Computer or on the computer desktop?*

**A:** If your system has a USB 2.0 PCI adapter card, be sure that its drivers are installed before connecting your WD USB 2.0 external storage product. The drive is not recognized correctly unless USB 2.0 root hub and host controller drivers are installed. Contact the adapter card manufacturer for installation procedures.

**Q:** *Why won't my computer boot when I connect my USB drive to the computer before booting?*

**A:** Depending on your system configuration, your computer may attempt to boot from your WD portable USB drive. Refer to your system's motherboard BIOS setting documentation to disable this feature or visit <http://support.wdc.com> and see Knowledge Base answer ID 1201. For more information about booting from external drives, refer to your system documentation or contact your system manufacturer.

## A

## Installing the SES Driver

If you do not install the WD SmartWare software, installing the SES driver on Windows computers keeps the hardware popup wizard from displaying every time you connect your My Book drive to the computer.

*Note:* The SES driver is installed automatically when you install the WD SmartWare software or if you clicked **Do Not Install** on the Welcome to WD SmartWare screen (see “Getting Started Without the WD SmartWare Software” on page 56).

This appendix includes the following topics:

- [Installing on Windows XP Computers](#)
- [Installing on Windows Vista Computers](#)
- [Installing on Windows 7 Computers](#)

### Installing on Windows XP Computers

After connecting the drive as shown in Figure 4 on page 6, the Found New Hardware Wizard screen displays.

*Note:* If Autoplay is enabled, two additional screens might appear at the same time as the Found New Hardware Wizard screen. If they appear, close them.

You can use the Found New Hardware Wizard to install the SES driver either:

- Automatically, if your computer is connected to the Internet
- Manually, whether your computer is connected to the Internet or not

### Installing the Driver Automatically

To install the SES driver automatically, your computer must be connected to the Internet:

1. Verify that your computer is connected to the Internet.
2. On the Found New Hardware Wizard screen, select **Yes this time only** to allow Windows XP to connect to Windows Update:



3. Click **Next** to continue.



4. Select **Install the software automatically** and click **Next**:



5. When the installation completes, click **Finish**:



## Installing the Driver Manually

If your computer is not connected to the Internet, install the driver manually:

1. On the Found New Hardware Wizard screen, select **No, not this time** to inhibit a connection attempt to Windows Update:

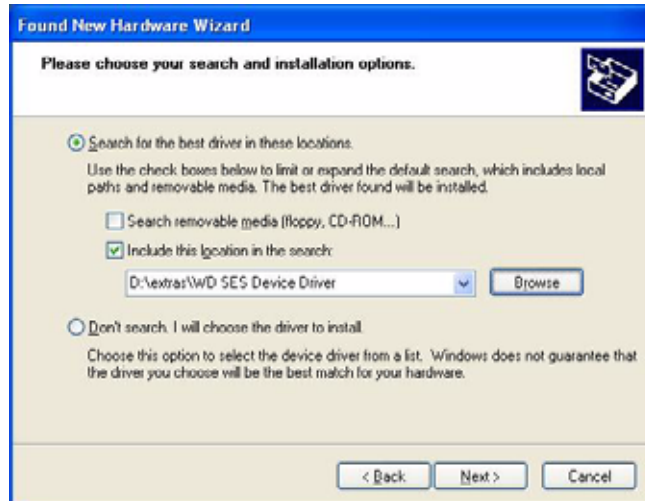


2. Click **Next** to continue.
3. Select **Install from a list or specific location** and click **Next**:



4. Browse to **My Computer** and:
  - a. Double-click the My Book drive.
  - b. Double-click the Extras folder.
  - c. Select **WD SES Device Driver**.

d. Click **Next**:



5. When the installation completes, click **Finish**:



## Installing on Windows Vista Computers

After connecting the drive as shown in Figure 4 on page 6, the Found New Hardware screen displays.

*Note:* If Autoplay is enabled, two additional screens might appear at the same time as the Found New Hardware screen. If they appear, close them.

You can use the Found New Hardware screen to install the SES driver either:

- Automatically, if your computer is connected to the Internet
- Manually, whether your computer is connected to the Internet or not

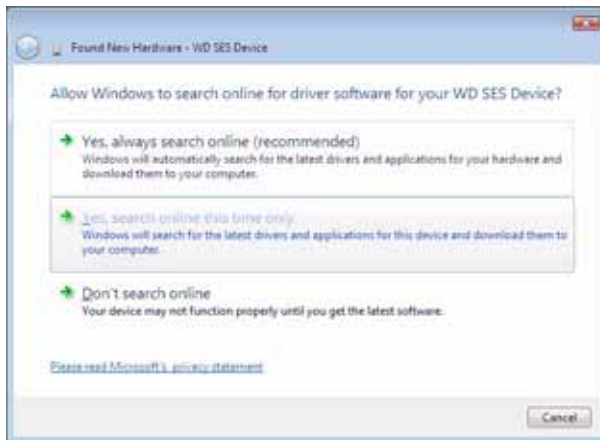
## Installing the Driver Automatically

To install the SES driver automatically, your computer must be connected to the Internet:

1. Verify that your computer is connected to the Internet.
2. On the Found New Hardware screen, click **Locate and install driver software**:



3. On the Found New Hardware - WD SES Device screen, click **Yes, search online this time only** to allow Windows Vista to connect to Windows Update:



Windows Vista automatically:

- Connects to Windows Update
- Finds, downloads, and installs the SES driver

## Installing the Driver Manually

If your computer is not connected to the Internet, install the driver manually:

1. On the Found New Hardware screen, click **Locate and install driver software**:



2. On the Found New Hardware - WD SES Device screen, click **Don't search online**:

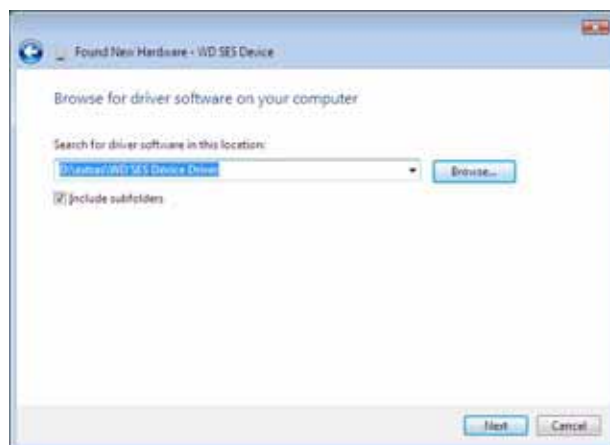


3. At the **Insert the disc that came with your WD SES Device** prompt, click **I don't have the disc. Show me other options**:

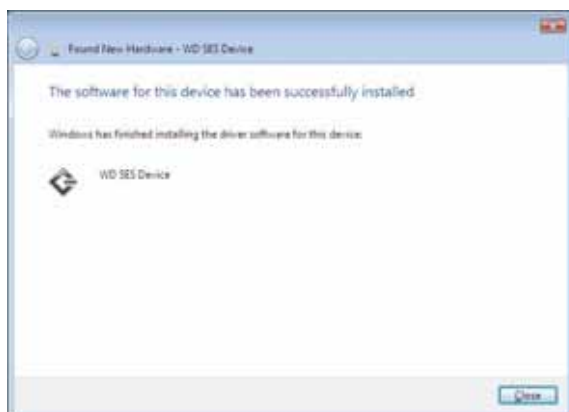


4. Browse to **Computer** and:
  - a. Double-click the My Book drive.

- b. Double-click the Extras folder.
- c. Select **WD SES Device Driver**.
- d. Click **Next**:



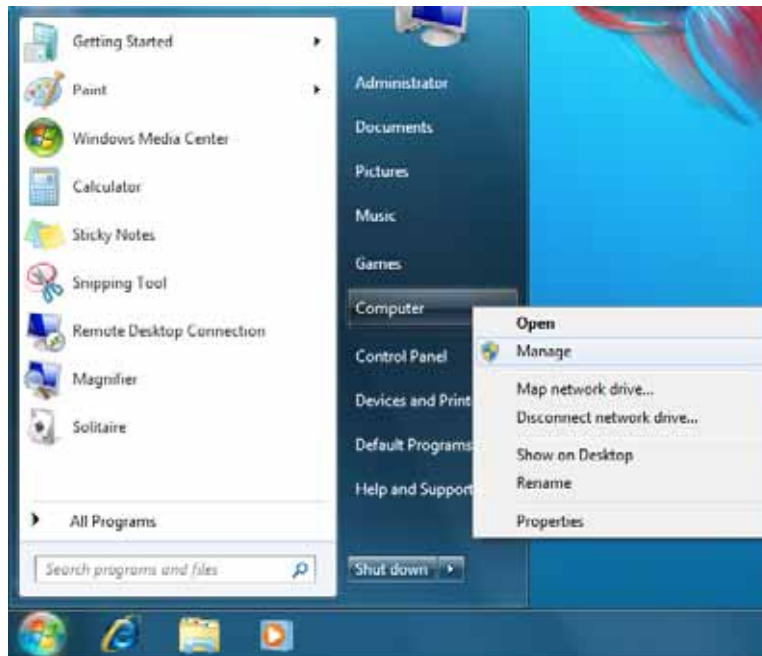
5. When the installation completes, click **Close**:



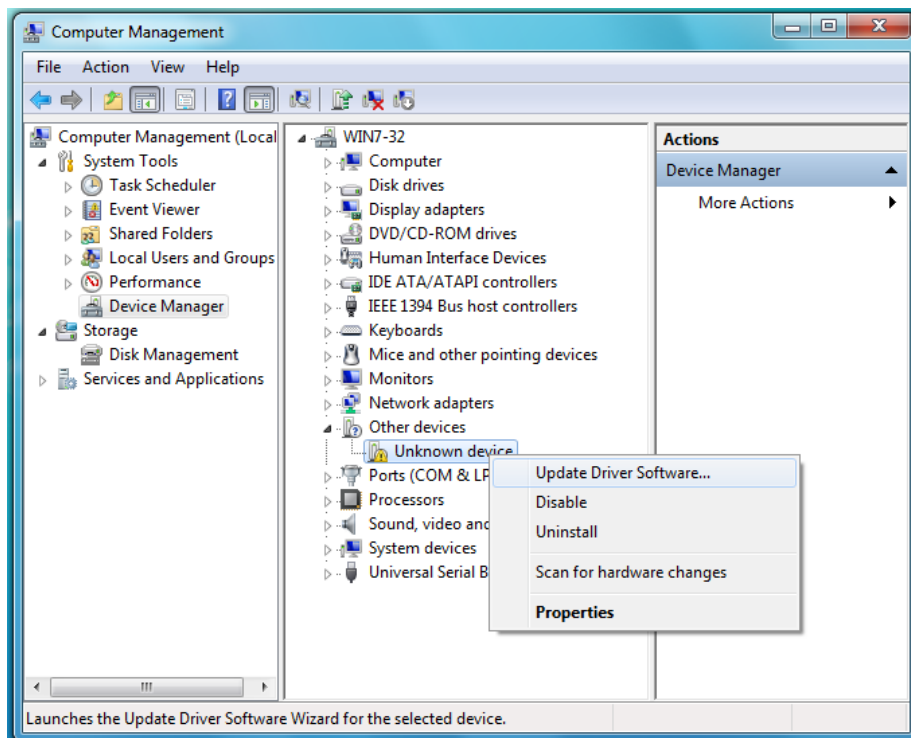
## Installing on Windows 7 Computers

After connecting the drive as shown in Figure 4 on page 6, use the Windows 7 Computer Management utility to install the SES driver:

1. Open **All Programs** and click **Computer > Manage**:



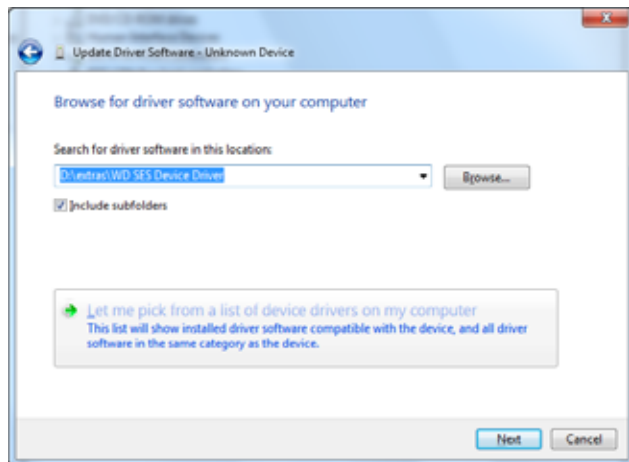
2. Under **Computer Management (Local)**, click **Device Manager > Unknown Device** and right-click **Update driver software**:



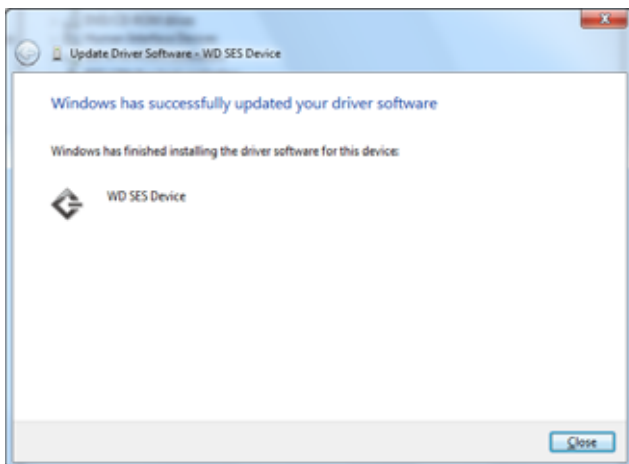
3. Click **Browse my computer for driver software**.



4. Browse to **Computer**, double-click the My Book drive, double-click the Extras folder, and select **WD SES Device Driver**:



5. Click **Next**.
6. When the installation completes, click **Close**:





**B**

## Compliance and Warranty Information

This appendix includes the following topics:

- [Regulatory Compliance](#)
- [Environmental Compliance \(China\)](#)
- [Warranty Information](#)

### Regulatory Compliance

#### FCC Class B Information

This device has been tested and found to comply with the limits of a Class B digital device, pursuant to Part 15 of the FCC Rules. These limits are designed to provide reasonable protection against harmful interference in a residential installation. This unit generates, uses, and can radiate radio frequency energy and, if not installed and used in accordance with the instructions, may cause harmful interference to radio or television reception. However, there is no guarantee that interference will not occur in a particular installation. Any changes or modifications not expressly approved by WD could void the user's authority to operate this equipment.

#### ICES/NMB-003 Compliance

Cet appareil de la classe B est conforme à la norme NMB-003 du Canada.

This device complies with Canadian ICES-003 Class B.

#### Safety Compliance

Approved for US and Canada. CAN/CSA-C22.2 No. 60950-1, UL 60950-1: Safety of Information Technology Equipment.

Approuvé pour les Etats-Unis et le Canada. CAN/CSA-C22.2 No. 60950-1 : Sûreté d'équipement de technologie de l'information.

This product is intended to be supplied by a listed limited power source, double insulated, or direct plug-in power unit marked "Class 2."

#### CE Compliance For Europe

Marking by the CE symbol indicates compliance of this system to the applicable Council Directives of the European Union, including the EMC Directive (2004/108/EC) and the Low Voltage Directive (2006/95/EC). A "Declaration of Conformity" in accordance with the applicable directives has been made and is on file at Western Digital Europe.

#### GS Mark (Germany only)

Machine noise - regulation 3. GPSGV: Unless declared otherwise, the highest level of sound pressure from this product is 70db(A) or less, per EN ISO 7779.

Maschinenlärminformations-Verordnung 3. GPSGV: Der höchste Schalldruckpegel beträgt 70 db(A) oder weniger gemäß EN ISO 7779, falls nicht anders gekennzeichnet oder spezifiziert.

## KCC Notice (Republic of Korea only)

기종별§	사용자 안내문§
비급 기기 (가정용 정보통신기기)§	이 기기는 가정용으로 전자파 적합 인증을 한 기기로서 주거지역에서는 물론 모든 지역에서 사용할 수 있습니다.§

Class B Device 1 Please note that this device has been approved for non-business purposes and may be used in any environment, including residential areas.

## Environmental Compliance (China)

部件名称	有毒有害物质和元素					
	铅 (Pb)	镉 (Cd)	汞 (Hg)	六价铬 (Cr <sup>6+</sup> )	多溴联苯 (PBB)	多溴二苯醚 (PBDE)
包装页	○	○	○	○	○	○
包装外壳	○	○	○	○	○	○
光导管	○	○	○	○	○	○
电源按钮	○	○	○	○	○	○
HDD 托架	○	○	○	○	○	○
EMI 外壳	○	○	○	○	○	○
个性化板材	○	○	○	○	○	○
Kensington 锁按键	○	○	○	○	○	○
螺丝 6-32x6.35mm	○	○	○	○	○	○
螺丝 M3x5mm+5W	○	○	○	○	○	○
垂直支脚	○	○	○	○	○	○
减震架	○	○	○	○	○	○
印制板装配 (PCA)*	○	○	○	○	○	○
硬盘	X	○	○	○	○	○
电缆组件	○	○	○	○	○	○
电源适配器	○	○	○	○	○	○
电源线	○	○	○	○	○	○

\* 印制板装配包括所有印刷电路板 (PCB) 及其相应的各个组件、IC 及连接器。

○ : 表示此部件所用的所有均质材料中包含的此有毒或有害物低于 MCV 标准中的限制要求。

X : 表示此部件所用的均质材料中至少有一种材料包含的此有毒或有害物高于 MCV 标准中的限制要求。

在出现一个 “X” 的所有情况下, WD 采用容许的排除。

## Warranty Information

### Obtaining Service

WD values your business and always attempts to provide you the very best of service. If this Product requires maintenance, either contact the dealer from whom you originally purchased the Product or visit our product support website at <http://support.wdc.com/warranty/policy.asp> for information on how to obtain service or a Return Material Authorization (RMA). If it is determined that the Product may be defective, you will be given an RMA number and instructions for Product return. An unauthorized return (i.e., one for which an RMA number has not been issued) will be returned to you at your expense. Authorized returns must be shipped in an approved shipping container, prepaid and insured, to the address provided on your return paperwork. Your original box and packaging materials should be kept for storing or shipping your WD product. To conclusively establish the period of warranty, check the warranty expiration (serial number required) via <http://support.wdc.com/warranty/policy.asp>. WD shall have no liability for lost data regardless of the cause, recovery of lost data, or data contained in any Product placed in its possession.

## Limited Warranty

WD warrants that the Product, in the course of its normal use, will for the term defined below, be free from defects in material and workmanship and will conform to WD's specification therefor. The term of your limited warranty depends on the country in which your Product was purchased. The term of your limited warranty is for 2 years in the North, South and Central America region, 2 years in the Europe, the Middle East and Africa region, and 3 years in the Asia Pacific region, unless otherwise required by law. The term of your limited warranty period shall commence on the purchase date appearing on your purchase receipt. WD shall have no liability for any Product returned if WD determines that the Product was stolen from WD or that the asserted defect a) is not present, b) cannot reasonably be rectified because of damage occurring before WD receives the Product, or c) is attributable to misuse, improper installation, alteration (including removing or obliterating labels and opening or removing external enclosures, unless the product is on the list of limited user-serviceable products and the specific alteration is within the scope of the applicable instructions, as found at <http://support.wdc.com/warranty/policy.asp>), accident or mishandling while in the possession of someone other than WD. Subject to the limitations specified above, your sole and exclusive warranty shall be, during the period of warranty specified above and at WD's option, the repair or replacement of the Product.

The foregoing limited warranty is WD's sole warranty and is applicable only to products sold as new. The remedies provided herein are in lieu of a) any and all other remedies and warranties, whether expressed, implied or statutory, including but not limited to, any implied warranty of merchantability or fitness for a particular purpose, and b) any and all obligations and liabilities of WD for damages including, but not limited to accidental, consequential, or special damages, or any financial loss, lost profits or expenses, or lost data arising out of or in connection with the purchase, use, or performance of the Product, even if WD has been advised of the possibility of such damages. In the United States, some states do not allow exclusion or limitations of incidental or consequential damages, so the limitations above may not apply to you. This warranty gives you specific legal rights, and you may also have other rights which vary from state to state.

## GNU General Public License ("GPL")

Firmware incorporated into this product may include third party copyrighted software licensed under the GPL or Lesser General Public License ("LGPL") (collectively, "GPL Software") and not Western Digital's End User License Agreement. In accordance with the GPL, if applicable: 1) the source code for the GPL Software may be downloaded at no charge from <http://support.wdc.com/download/gpl> or obtained on CD for a nominal charge from <http://support.wdc.com/download/gpl> or by calling Customer Support within three years of the date of purchase; 2) you may re-use, re-distribute, and modify the GPL Software; 3) with respect solely to the GPL Software, no warranty is provided, to the extent permitted by applicable law; and 4) a copy of the GPL is included herewith, may be obtained at <http://www.gnu.org>, and may also be found at <http://support.wdc.com/download/gpl>.

Modification of or tampering with the Software, including but not limited to any Open Source Software, is solely at your own risk. Western Digital is not responsible for any such modification or tampering. Western Digital will not support any product in which you have or have attempted to modify the Software supplied by Western Digital.

# Index

## A

Accessories, optional 2

## B

Backup

- about backing up files 14
- files content box 17
- procedure 16, 17

Box contents 2

## C

Capacity gauge 4

CAUTION

- about erasing the drive 38
- about lost passwords 25
- about preventing data loss when disconnecting 33, 52
- about your unlocked drive 26

Checking 52

China RoHS 69

Compatibility with operating systems 3

Compliance, regulatory 68

Connecting the drive 6

Converting drive format 57

Creating a password 25

Customizing 34

## D

Disk image, downloading and restoring 41, 44

Drive

- connecting 6
- diagnostics and status checks 42
- eraser, setting 36
- handling precautions 5
- sleep timer 37

Drive Settings

- drive eraser 36, 38
- file history 34
- registration 36
- security 25, 36
- sleep timer 37

## E

Environmental compliance, China 69

Erasing the drive 38

- CAUTION about erasing the drive 38

## F

FAQs 57

File

- categories, defined 51
- history, drive setting 34
- history, screen 19

Formats 3

Front and back views 3

Full Media Scan 42

## G

GNU general public license 70

GPL software 70

## H

Handling precautions 5

Hardware 2

## I

In 51

## K

Kensington security slot 5

Kit contents 2

## L

Launching WD SmartWare software 31

LEDs

- lock indicator 5
- power/activity 4

Limited Warranty 70

## M

Mail file category, defined 51

Movies file category, defined 51

Music file category, defined 51

## O

obtaining service 69

Online Help 13

Operating system requirements 3

Operating systems 3

Opti 2

Other file category, defined 51

## P

Password protecting your drive 25

- CAUTION about lost passwords 25

Physical description 3

Pictures file category, defined 51

Power button 5, 33

Precautions for handling the drive 5

Preferences options, setting 35

Preferences software setting 34

Product features 1

Product registration 5

## **Q**

Quick Diagnostic Self-test 42

## **R**

Reformatting the drive 44

Reformatting the drive 57

Register Drive screen 36

Registering your drive 36

Registration drive setting 36

Registration, online 5

Regulatory compliance 68

Restarting WD SmartWare software 31

Restoring the software disk image 41, 44

Retrieve

about retrieving files 21

folder, software setting 34

folder, specifying 34

procedure 21

RoHS 69

Run Diagnostics screen 43

## **S**

Safely 52

Security drive settings 36

Set

preferences screen 35

retrieve folder screen 34

sleep timer screen 37

Setting the drive sleep timer 37

SMART Status Check 42

Software Settings

preferences 34, 35

retrieve folder 34

system throttling 34

Software, GPL 70

Space available

capacity guage 4

Settings

See Drive Settings

System

compatibility 3

file category, defined 12, 16

throttling software setting 34

System compatibility 3

## **U**

Unlocking the drive 53

with the WD SmartWare software 27,  
54

without the WD SmartWare software  
28, 55

USB drive interface 5

## **V**

Virtual CD

unlocking the drive from 28

## **W**

warranty 69

WD service 69

WD SmartWare icon

Windows 31

Windows

disconnecting the drive safely 52

flashing icon alerts 52

restarting WD SmartWare software 51

status check 51, 52

temperature check 51, 52

uninstalling WD SmartWare software  
55

WD SmartWare icon 51

Windows XP

installing drive on 44

---

Information furnished by WD is believed to be accurate and reliable; however, no responsibility is assumed by WD for its use nor for any infringement of patents or other rights of third parties which may result from its use. No license is granted by implication or otherwise under any patent or patent rights of WD. WD reserves the right to change specifications at any time without notice.

Western Digital, WD, the WD logo, My Book, and My Passport are registered trademarks and My Passport Essential, WD SmartWare, and Data Lifeguard are trademarks of Western Digital Technologies, Inc. Other marks may be mentioned herein that belong to other companies.

© 2010 Western Digital Technologies, Inc. All rights reserved.

Western Digital  
3355 Michelson Drive, Suite 100  
Irvine, California 92612 U.S.A.

4779-705029-A04 Mar 2011