

# **Dismantling information**

The document is intended for use by end-of-life recyclers or treatment facilities. It provides the basic instructions for the disassembly of LG products to remove components and materials requiring selective treatment.

## **Product Identification**

<b>Type of Product</b>	<b>Monitor</b>
<b>Model name</b>	<b>27G810A</b>

Displays must be stored in accordance with the requirements stipulated in Appendix VII (1) or (2) of Directive 2012/19/EU and must, amongst other things, be stored in a weatherproof manner. Containers with covers must be used when storing and transporting the Displays.

## **Contents**

- 1. Materials and components for Selective Treatment**
- 2. Tools Required**
- 3. Product Disassembly Process**
- 4. Disassembly of External enclosure**





# 1. Materials and components for Selective Treatment

Displays may contain hazardous substances like Pb which are covered by exemptions under the RoHS directive. However, the majority is present in the PCB assembly. In order to reduce emissions as much as possible, a complete disposal of the old appliance is required. This treatment may only be performed in authorized handling plants.

Materials and components	Notes	Included	Remark
Printed Circuit Boards (PCB) or Printed Circuit Assemblies (PCA)		O	
Batteries	For Remote control	-	
	Internal batteries	-	
Mercury containing components	display backlights	-	
Liquid Crystal Displays (LCD) with a surface greater than 100 square cm	Includes background illuminated displays with gas discharge lamps	O	
Capacitors / condensers (Containing PCB / PCT)		O	
Electrolytic Capacitors / Condensers measuring greater than 2.5 cm in diameter or height		O	
External electric cables cords	Power cord	O	
	Signal cable	O	
Gas Discharge Lamps		-	
Plastics containing Brominated Flame Retardants	Plastic of speaker, cable connector, fan (depend on model)	-	
Components and waste containing asbestos		-	
Components, parts and materials containing refractory ceramic fibers		-	
Components, parts and materials containing radioactive substances		-	

## 2. Tools Required

List the type that would typically be used to disassemble the product to a point where components and materials requiring selective treatment can be removed.

Tool Description	Tool information
Screw driver	 
Nipper	
Plastic Hera Jig	

## **3. Product Disassembly Process**

### **1) Batteries**

Batteries can easily be removed from the remote control once the back cover of the remote control has been removed.

None

Batteries can easily be removed from the PCB Assembly once the back cover of product has been removed.

None .

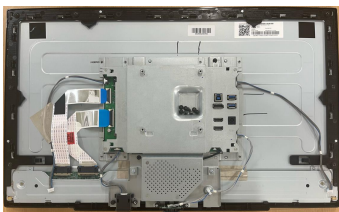
# 3. Product Disassembly Process

## 2) PCBs

The back cover of the display can easily be removed by hand and screw driver.



Once removed this will expose the accessible electronic units (PCBs),



which can now be easily removed with hand and screw driver.

Skyworth module



Metal



HP board



control board



Main Board

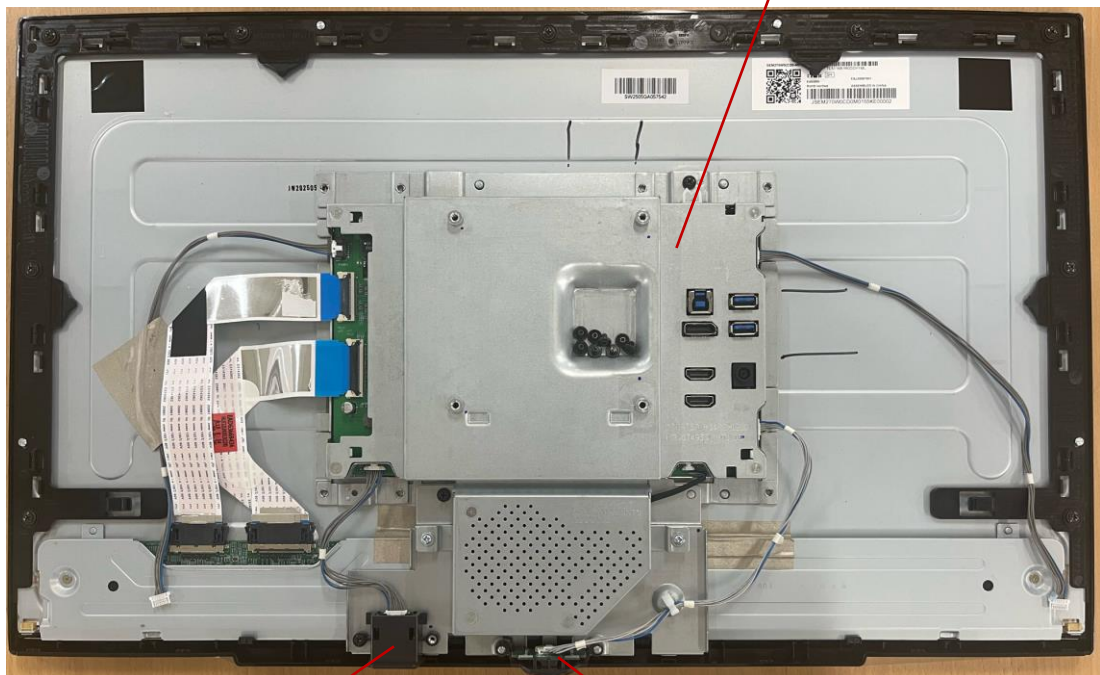


# 3. Product Disassembly Process

## 2) PCBs



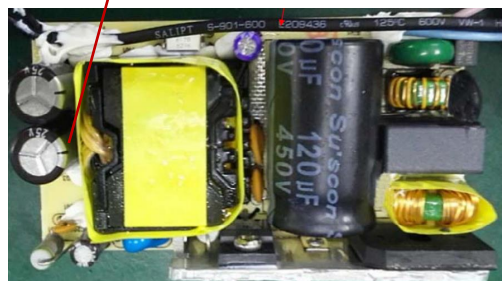
Main PCB



HP PCB



Adapter PCB



Control PCB



## **3. Product Disassembly Process**

### **3) Plastics containing Brominated Flame Retardants**

Plastic of speaker, cable connector, fan may contain brominated flame retardants, remove them all using a common available tool.

### **4) Skyworth Module**

Skyworth (together with their casing) is only left after all other parts like electronic units have been removed.

LCD module





## 3. Product Disassembly Process

### 5) Power cord and signal cables

A Power cord plugged into the back of the display can easily be removed by hand or cables are provided as de-attached from the product



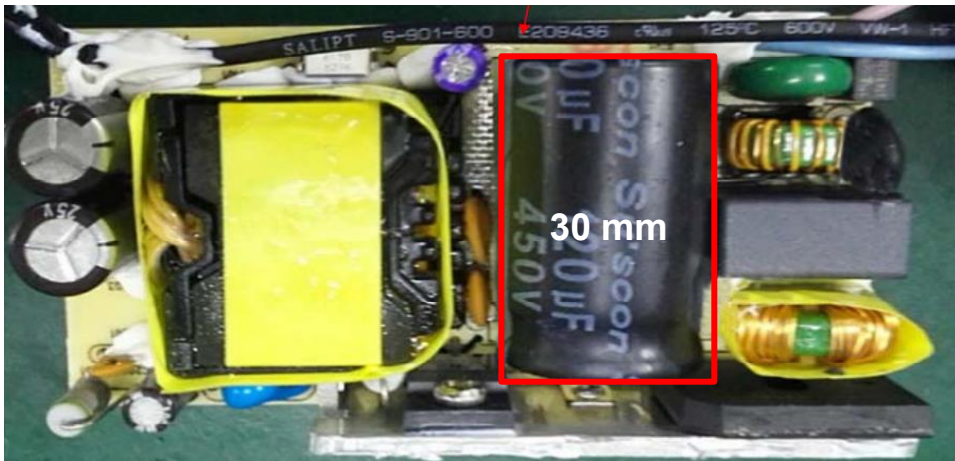
Adapter 1 EA  
HDMI 1 EA  
DP 1 EA  
USB 1 EA



## 3. Product Disassembly Process

### 6) Capacitors > 25 mm

Capacitors > 25 mm are located in the power supply units and can be removed by nipper



## 4. Disassembly of External enclosure

- Stand base(1EA) can be disassembly by Remove the screws(1ea)



Push the one click and than disassembly the stand body

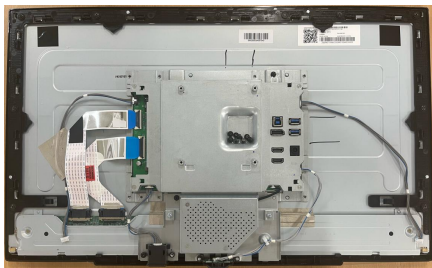


## 4. Disassembly of External enclosure

Disassemble the back cover



- Re-overturn the set and disassemble all the Cabinet screw and Main board Fix Screw and disassemble the PCB and cable



LCD Module



# 5. Exploded Diagram of Parts

