

PHILIPS

Air styler

7000 Series

Rotating Volume brush

Ionic and Tourmaline

2 attachments



BHA710/00



Versatile styling for smooth and shiny hair

Philips Rotating Volume brush with 2 attachments

Use the Philips Dynamic Volume brush to create different styles, while keeping hair smooth and shiny. Its 50 mm rotating natural bristle brush adds volume and movement, while the retractable brush creates defined waves without tangles.

Protects your style, cares for your hair

- 50 mm brush for smoother, shinier results
- Care+ setting for better protection while drying and styling

Ultimate shine and condition

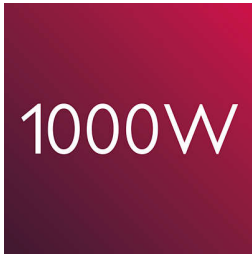
- Ionic conditioning prevents frizz, maximises shine
- Tourmaline ceramic adds more shine to your hair

Volume, body and waves without tangles

- 1000 W power for beautiful results
- 50-mm round brush adds volume and movement
- 30 mm retractable brush for tangle-free styling
- The brushes can be rotated in both directions

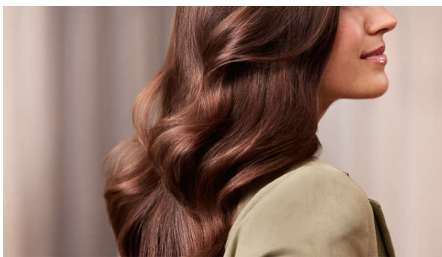
Highlights

1000 W power



This 1000 W airstyler creates the optimum level of airflow and gentle drying power, for beautiful results every day.

Ionic care



Ionic conditioning dries hair without building up static. Negatively charged ions are released, reducing frizz, smoothing down the hair's cuticles and intensifying hair's shine and glossiness. The result is shiny, frizz-free hair that looks its best.

Tourmaline ceramic coating



The styler's unique tourmaline ceramic coating protects and revitalises hair while you style. This special coating conducts heat effectively with no hot spots and adds shine with every stroke.

50 mm round brush



The 50 mm thermo brush is the perfect way to add volume, body and shine to your hair. Use on nearly-dry hair to create a beautiful salon blow dry at home.

30 mm retractable brush



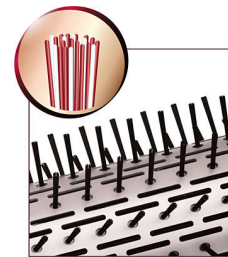
Use the 30 mm brush to add defined waves while keeping hair smooth and shiny. Its retractable bristles make it easy to style without tangles.

Two-way rotation



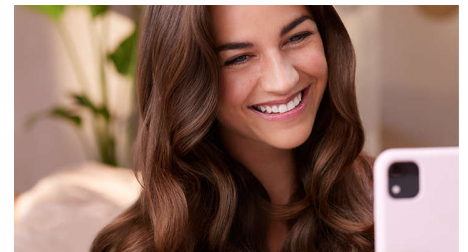
The brush can be rotated in both directions, making it easy to handle and create a variety of styles.

Natural bristles



The bristles of the thermo brush are partially made from natural boar bristles. These mixed bristles help the brush move through the hair more smoothly, reducing static, increasing shine and preventing tangles.

Care+ setting



The 'Care+' setting ensures the optimum drying temperature and guards against overheating. Hair still dries fast, with the same powerful airflow but at a constant, caring temperature.

Specifications

Attachments

Retractable bristle brush: 30 mm
Natural mixed bristle brush: 50 mm
Brush cap: for 50 mm round brush

Technical specifications

Cord length: 1.8 m
Voltage: 220–240 V
Colour/finishing: Silk white with Oyster metallic
Wattage: 1000 W

Features

Hanging loop
Swivel cord
Ionic conditioning

Rotating setting: 2 rotating speed settings
Settings: Heat settings: 3, Speed setting: 2
Tourmaline ceramic coating

Service

2 year guarantee

