

**PHILIPS**

Service  
Manual



**PERFECT CARE 7000 SERIES  
STEAM GENERATOR  
PSG7200 / PSG7300**

## Contents

1. Product Information .....	3
2. Product Matrix .....	4
3. Repair Instructions.....	5
4. Troubleshooting Guide .....	6
5. Before Starting FMT.....	10
5.1 Introduction: .....	10
5.2 HE Version:.....	10
5.3 LE Version:.....	11
6. Perform FMT (HE) .....	12
7. Perform FMT (LE) .....	13
8. Wiring Diagram .....	14
9. Tools & Special Instructions Disassembly and Assembly.....	16
10. Disassembly Instructions for Top Five Service Parts .....	18
10.1 Disassembly Instructions – Power PCBA (Stand side).....	18
10.2 Disassembly Instructions – Pump Assy (Stand side) .....	22
10.3 Disassembly Instructions – E-Valve (Stand side).....	26
10.4 Disassembly Instructions – Boiler Assy (Stand side) .....	30
10.5 Disassembly Instructions – Soleplate Assy (Iron Assy).....	34
11. Assembly Instructions for Top Five Service Parts .....	36
11.1 Assembly Instruction Power PCBA (Stand side).....	37
11.2 Assembly Instruction Pump Assy (Stand side) .....	40
11.3 Assembly Instruction E-valve (Stand side) .....	43
11.4 Assembly Instruction Boiler Assy (Stand side) .....	46
11.5 Assembly Instruction Sole plate Assy (Iron Assy).....	50
12. Disassembly Instruction other service parts (Stand Assy).....	54
13. Assembly Instruction other service parts (Stand Assy) .....	63
14. Service Parts list.....	71
14.1 Parts list.....	71
14.2 Consumer Replaceable Part .....	74
14.3 Exploded View Iron (HE) .....	75
14.4 Exploded View Stand (HE) .....	76
15. Revision History .....	77

## 1. Product Information

### Functions/Features information

#### Fast & Powerful Crease Removal

- Soleplate: SteamGlide Elite
- Optimal TEMP Technology
- No Temperature setting needed
- Vertical Steam
- Steam on demand

#### Calc Management

- Suitable for tap water
- Calc Clean solution: Easy-De-Calc
- Descaling reminder: Light & Sound

#### Storage

- Storage solution: Carry Lock
- Hose Storage: Hose storage compartment
- Cord storage: Velcro fix

#### Easy to use

- Detachable Water Tank
- Refill any time
- Water low indicator
- Cord freedom, Swivel 180 degree
- Open handle
- Light and comfortable
- Safety auto off
- Heat-up-time: 2 minutes
- Safe for all fabrics

#### Size and weight

- Product (W x H x L): 240 x 288 x 444mm
- Total weight with Packaging: 6.4 Kg
- Weight of Iron: 1.02 Kg
- Weight of Iron + Base: 4.66 Kg

## 2. Product Matrix

### Product Image



CTV	PSG7200/20 PSG7200/21	PSG7200/30	PSG7200/60 PSG7200/61
Steam rate up to (g/min)	EU: 160 SG/MY: 160 AU, Sw: 150	EU: 160 SG/MY: 160 AU: 150	EU: 160 SG/MY: 160 AU, Sw: 150
Steam boost up to (g)	600 g	600 g	600 g
Max bar pressure	8.5 bar	8.5 bar	8.5 bar
Power claim (W)	EU: 3120 SG/MY: 2850 AU, Sw: 2400	EU: 3120 SG/MY: 2850 AU: 2400	EU: 3120 SG/MY: 2850 AU, Sw: 2400
Energy saving	Yes	Yes	Yes
Eco setting	Yes	Yes	Yes
Heat up time	<= 2 min	<= 2 min	<= 2 min
OptimalTEMP	Yes	Yes	Yes
Auto shutt-off	Yes	Yes	Yes
Calc solution	Easy De-Calc Plus	Easy De-Calc Plus	Easy De-Calc Plus

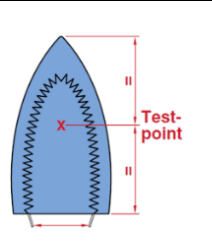
### Product Image



CTV	PSG7300/20	PSG7300/70	PSG7300/80 PSG7300/81
Steam rate up to (g/min)	EU: 170 SG/MY: 170 AU: 150	EU: 170 SG/MY: 170 AU: 150	EU: 170 SG/MY: 170 AU/SW: 150
Steam boost up to (g)	650 g	650 g	650 g
Max bar pressure	8.5 bar	8.5 bar	8.5 bar
Power claim (W)	EU: 3120 SG/MY: 2850 AU, Sw: 2400	EU: 3120 SG/MY: 2850 AU, Sw: 2400	EU: 3120 SG/MY: 2850 AU, Sw: 2400
Energy saving	Yes	Yes	Yes
Eco setting	Yes	Yes	Yes
Heat up time	<= 2 min	<= 2 min	<= 2 min
OptimalTEMP	Yes	Yes	Yes
Auto shutt-off	Yes	Yes	Yes
Calc solution	Easy De-Calc Plus	Easy De-Calc Plus	Easy De-Calc Plus

### 3. Repair Instructions

1. Only skilled personnel should carry out the repair.
2. Verification test to carry out as follows, to determine the problem:
  - a. Ensure products are properly assembled
  - b. Power on
  - c. Water Tank to be filled up to **Maximum** level
3. Refer to the Troubleshooting guide for part repair/replacement.
4. A specific tool needs to be used for the following part replacement.  
Inox Clamp – Refer to page 16  
E-Valve – Refer to page 17
5. After repaired, the appliance must function properly, The following test is to be carried out:
  - a. **POWER-ON CHECK**  
Powered-ON with socket equipped with Residual Current Circuit Breaker (RCCB) or Earth Leakage Circuit Breaker (ELCB) to ensure no electrical hazard risk to end consumer.
  - b. **Soleplate temperature**  
Check the soleplate temperature at maximum setting within IEC requirement.  
Measure the temperature of the Soleplate after the iron has reached steady state i.e connected to the mains for at least 15 minutes. The table below shows the temperature requirement.

Soleplate temperature (Deg C)		
Minimum	Maximum	
135 Deg C	155 Deg C	

- c. **Water leakage**  
Check that there is no water leakage from any part of product during operation.
- d. **Functionality**  
Check the functionality of the product such as:
  - Steaming
  - PCBA (Refer to point 6).
  - Buttons: no sluggish, no jammed and looseness
- e. **Loose part**  
Check that there are no loose parts such as extra screws in the product that can cause short circuit or product malfunction.

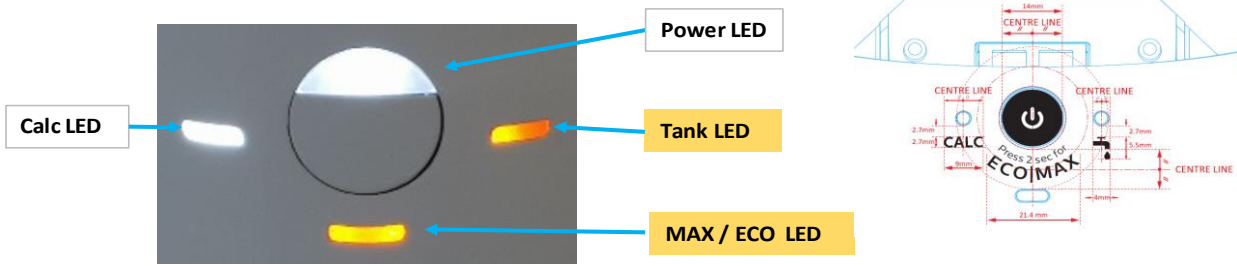
## 4. Troubleshooting Guide

	Problem	Possible root cause	Solution
Entry Factory mode	Cannot enter factory mode	Water tank is attached	Remove water tank & check again
		Timing incorrect (step not follow-press& hold power button before Plug-in)	Repeat the step (Ensure that you press and hold the power button before plug-in, Press & release steam trigger twice within 0.5 sec as soon as tank led ON before timeout i.e. 3Sec).
		Power cord connection to Power PCBA (PW) to Iron PCBA for HE or trigger LED module for LE.	Step 1 - Check the connection Step 2 - Replace with Power PCBA
		Power button failure power PCBA	Replace with Power PCBA
		Steam trigger failure iron PCBA	Trigger Molded - Replace Trigger module ASSY for LE Replace Iron PCBA module for HE Replace Power PCBA for LE
		Timing incorrect (step not follow-press& hold power button before Plug-in)	Repeat the step (Ensure that you press and hold the power button before plug-in).
Factory Mode Test	Power led (White) & Tank led (Amber) blinking together <b>(zero cross detection circuit not OK)</b>	Power PCBA	Replace Power PCBA
	Power led (White) & Decal led (Amber) blinking together <b>(Mems failure error)</b>	Iron PCBA	Replace Iron PCBA
	Max led (White) & Tank led (Amber) blinking alternatively <b>(Boiler thermistor sensing is not okay)</b>	Check Boiler Assy/ Thermistor connection	Replace Boiler Assy & Inox Clamp/Thermistor ASSY
		Power PCBA	Replace Power PCBA
	Max led (White) & Decal led (Amber) blinking alternatively <b>(Boiler thermistor sensing is not okay)</b>	Check Boiler Assy/ Thermistor connection	Replace Boiler Assy & Inox Clamp/Thermistor ASSY
		Power PCBA	Replace Power PCBA
	Power LED (White) & Tank-Empty LED (Amber) blinking alternatively <b>(Iron thermistor sensing is not okay)</b>	Iron PCBA Module for HE	Replace Iron PCBA
		Power PCBA for LE	Replace Power PCBA
		Thermistor ASSY	Relace thermistor ASSY
		Soleplate Assy	Replace Soleplate Assy
	Power LED (White) & DeCalc LED (Amber) blinking alternatively <b>(Iron thermistor sensing is not okay)</b>	Iron PCBA Module for HE	Replace Iron PCBA
		Power PCBA for LE	Replace Power PCBA
		Boiler Assy	Clamp
Soleplate Assy		Replace Soleplate Assy	

	Iron heater power does not show in the power meter	Soleplate Assy	Replace Soleplate Assy
		Mains cord	Replace Mainscord
		Power PCBA	Power PCBA
	Boiler heater power does not show in the power meter	Boiler Assy	Replace Boiler Assy
		Mains cord	Replace Mainscord
		Power PCBA	Power PCBA
	Tank-empty detection funtion fault	Water Tank Assy	Replace Water Tank Assy
		Hall Sensor PCBA	Replace Hall Sensor PCBA
	Pump does not turn on as specified in factory test	Pump Faulty	Replace the pump assy
		Pump Connection	Check the pump connection
		Power PCBA	Replace Power PCBA
	E-Valve does not turn on as specified in factory test	Power PCBA	Replace Power PCBA
E-valve Wire connection		Replace E-Valve Assy, Inox Clamp & Stand Top Assy Replace E-Valve Assy & Inox Clamp	
LED and buzzer do not turn on as specified in factory test	Power PCBA	Replace Power PCBA	
	Iron PCBA MEMS module Assy for HE. Wire ASSY LED Module for LE	Replace Iron PCBA module Assy(HE) or Wire ASSY LED Module for LE	
Normal Operation	Zero-crossing detection circuit error (Power button pressed not able to power on the system), Please refer application operation error code	Power PCBA	Replace Power PCBA
	Single wire communication error, Please refer application operation error code	Iron PCBA module Assy for HE Check the connection	Replace Iron PCBA module Assy Check the connection from Iron PCBA to Power PCBA
	MEMS and Iron orientation error, Please refer application operation error code	Iron PCBA module Assy for HE	Replace Iron PCBA module Assy
	Iron temperature sensing circuit error, Please refer application operation error code	Iron PCBA Module for HE Power PCBA for LE Boiler Assy Soleplate Assy	Replace Power PCBA Replace Boiler Assy & Inox Clamp Replace Soleplate Assy
	Boiler temperature sensing circuit error, Please refer application operation error code	Power PCBA Boiler Assy	Replace Power PCBA Replace Boiler Assy & Inox Clamp
	Tank-empty detection function fault, Please refer application operation error code	Water Tank Assy Hall Sensor PCBA	Replace Water Tank Assy Replace Hall Sensor PCBA

E-Valve does not turn on	Power PCBA E-valve Wire connection	Replace Power PCBA Replace E-Valve Assy, Inox Clamp & Stand Top Assy Replace E-Valve Assy & Inox Clamp
Pump does not turn on	Power PCBA Pump Faulty	Replace Power PCBA Replace Combi E-Valve Assy, Inox Clamp & Stand Top Assy Replace Combi E-Valve Assy & Inox Clamp
LED and buzzer do not turn on	Power PCBA Iron PCBA MEMS module Assy for HE. Wire ASSY LED Module for LE	Replace Power PCBA or Iron PCBA module Assy(HE) or Wire ASSY LED Module for LE
Steam Trigger pressed does not detected	Trigger Molded Iron MEMS PCBA module Assy for HE Wire ASSY LED Module for LE	Replace Trigger Molded Replace Iron MEMS PCBA module Assy or Wire ASSY LED Module
Water leaking	Inlet Coupling seal Inlet Coupling Assy Water Tank Assy Soleplate Assy Boiler Assy Rinse Cap Assy	Replace Inlet Coupling seal Replace Inlet Coupling Assy Replace Water Tank Assy Replace Soleplate Assy Replace Boiler Assy Replace Rinse Cap Assy
Lock Jammed	Front Lock Bracket Assy Front Lock Slider Assy Tray Assy Soleplate Assy	Replace Front Lock Bracket Assy Replace Front Lock Slider Assy Replace Tray Assy Replace Soleplate Assy
No Pumping	Pump Assy Trigger Power PCBA	Replace Pump Assy Replace Trigger Replace Power PCBA
All the Plastic/rubber Parts damage/broken/torn	Misuse	Replace the affected plastic part

## Picasso Error Mode LED Indication



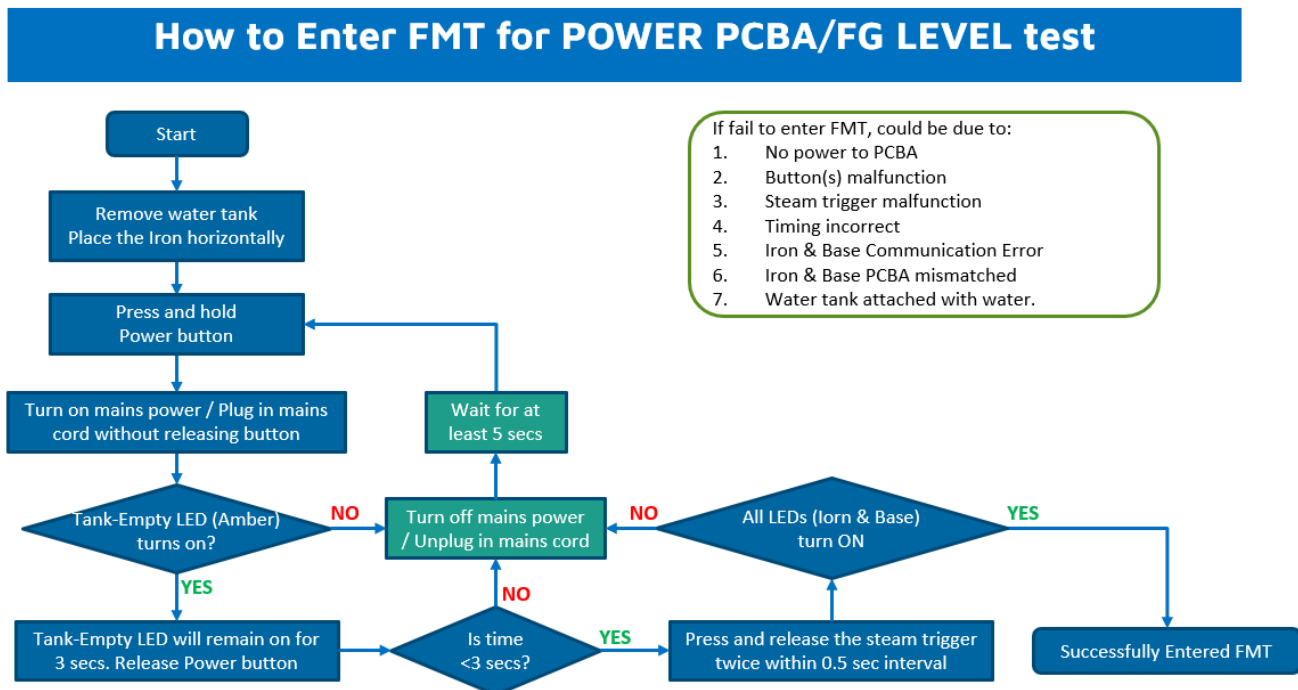
Error Detected		LED Indication	Picasso HE/LE
Over Heat	Iron Over Heat (> 200 °C)	Power LED (White) Fast Blink (400ms) <b>Power LED</b>	HE/LE
	Boiler Over Heat (> 250 °C)	Max LED (White) Fast Blink (400ms) <b>Max LED</b>	HE/LE
Thermistor Error	Iron Thermistor Short Circuit	Max, Power, Tank LED scrolling clockwise <b>Max LED</b> → <b>Power LED</b> → <b>Tank LED</b>	HE/LE
	Iron Thermistor Open Circuit	Tank, Power, Max LED scrolling anti-clockwise <b>Max LED</b> ← <b>Power LED</b> ← <b>Tank LED</b>	HE/LE
	Boiler Thermistor Short Circuit	Max, Calc, Tank LED scrolling clockwise <b>Max LED</b> → <b>Calc LED</b> → <b>Tank LED</b>	HE/LE
	Boiler Thermistor Open Circuit	Tank, Calc, Max LED scrolling anti-clockwise <b>Max LED</b> ← <b>Calc LED</b> ← <b>Tank LED</b>	HE/LE
Others	MEMS Sensor Malfunction	Max LED (White) & Power LED (White) Fast Blink (400ms) <b>Max LED</b> <b>Power LED</b>	HE
	Iron & Base Communication Error	Power LED (White) & Calc LED (Amber) Fast Blink (400ms) <b>Power LED</b> <b>Calc LED</b>	HE
	Zero-X Error	System in off mode	HE/LE

## 5. Before Starting FMT

### 5.1 Introduction:

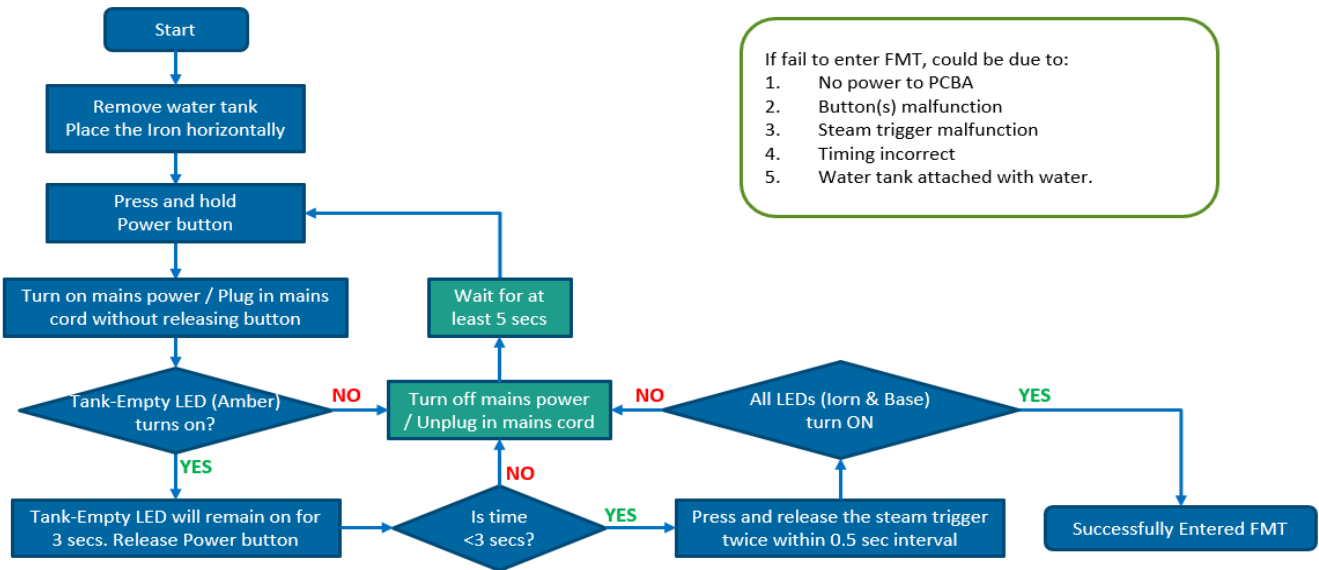
- Factory Mode Test (FMT) is facilitated by a built-in diagnosis program, which tests and activates all hardware inputs and outputs sequentially, with the aid of testing personnel's interaction and observation.
- FMT is NOT an exhaustive diagnosis, but a quick preliminary check on all the hardware function.
- Further test and troubleshooting may still be required to identify the root cause.
- Make sure Soleplate at room temp.
- Water tank is with water above min mark
- Make sure Boiler is empty
- Power meter in place to monitor system power
- DUT should be power off before starting test, AC power cord not plugged to power socket

### 5.2 HE Version:



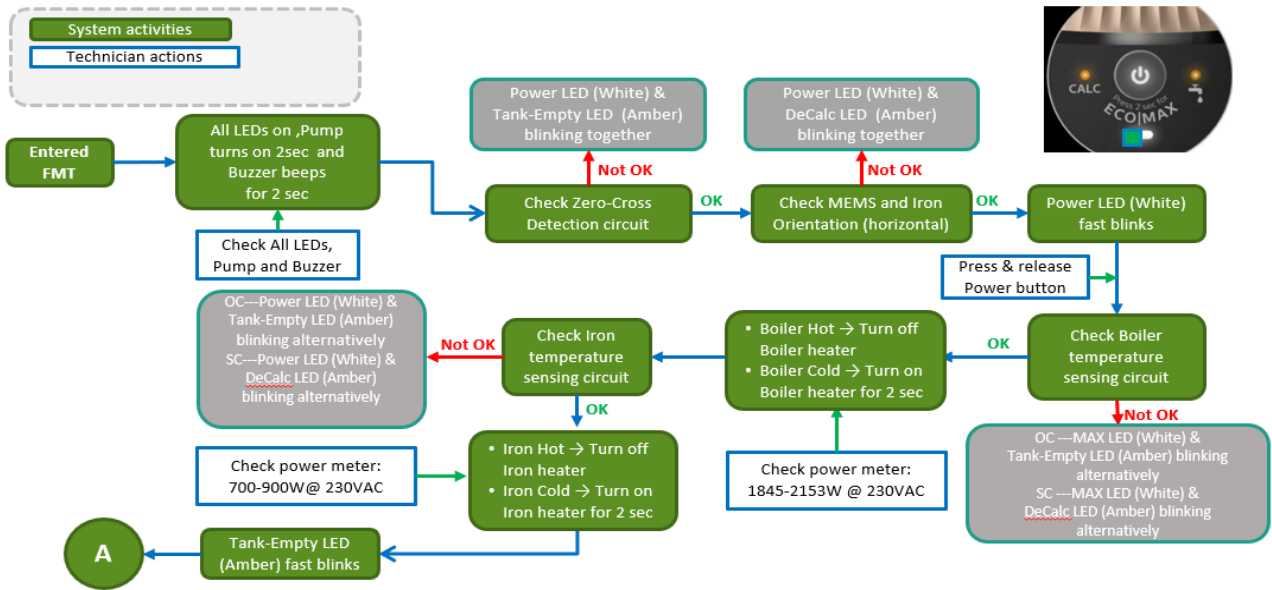
5.3 LE Version:

## How to Enter FMT for POWER PCBA/FG LEVEL test

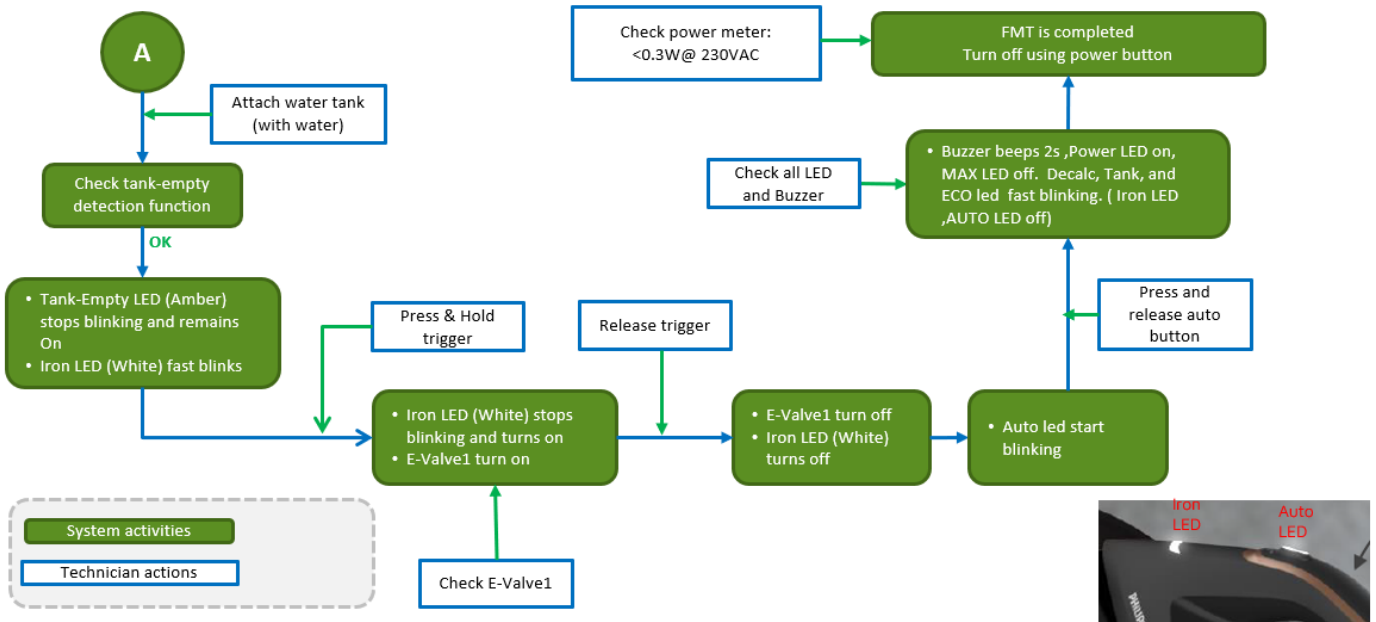


## 6. Perform FMT (HE)

### Perform FMT

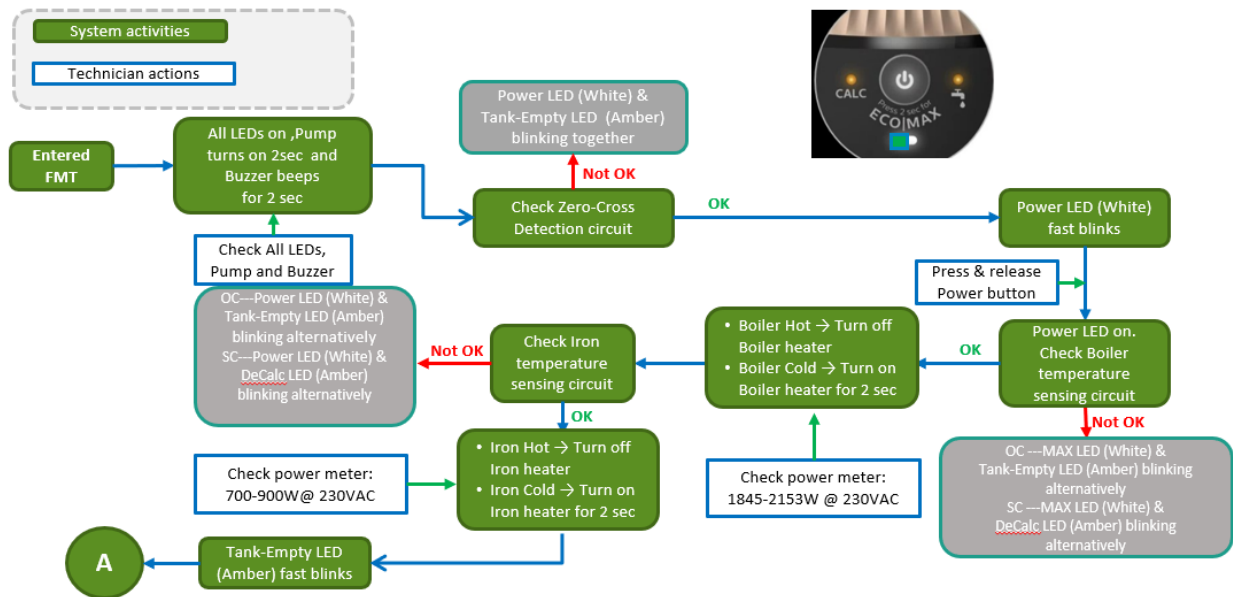


### Perform FMT

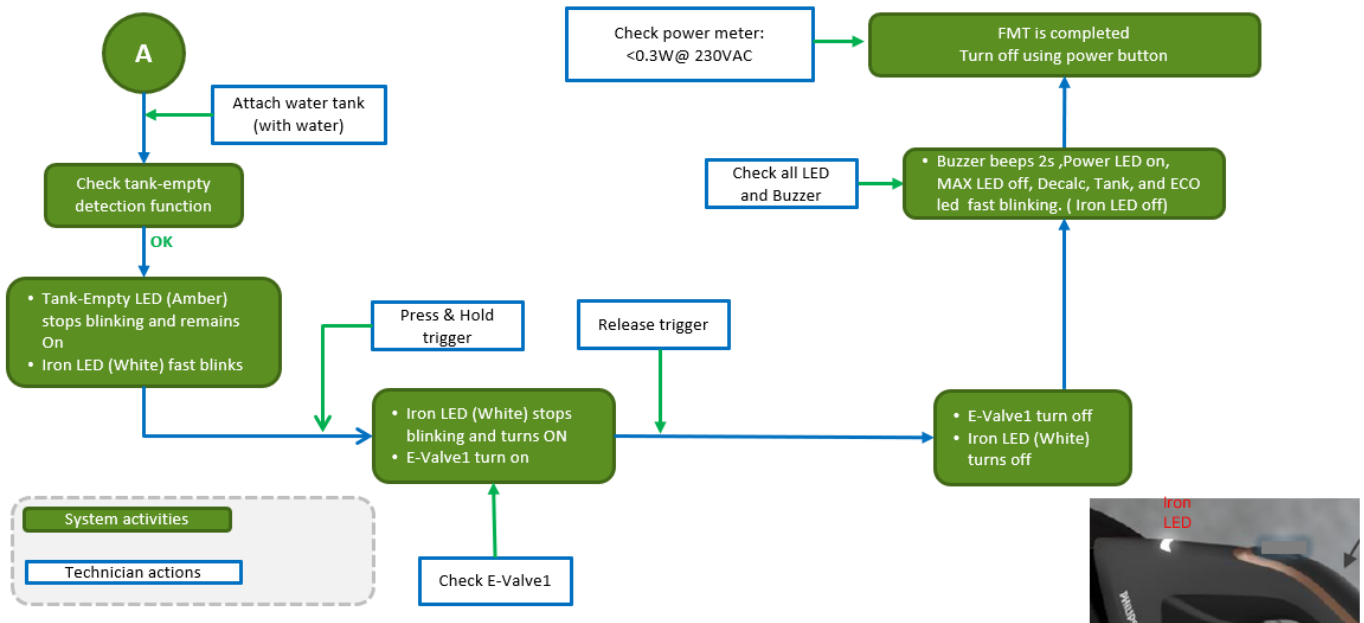


## 7. Perform FMT (LE)

### Perform FMT

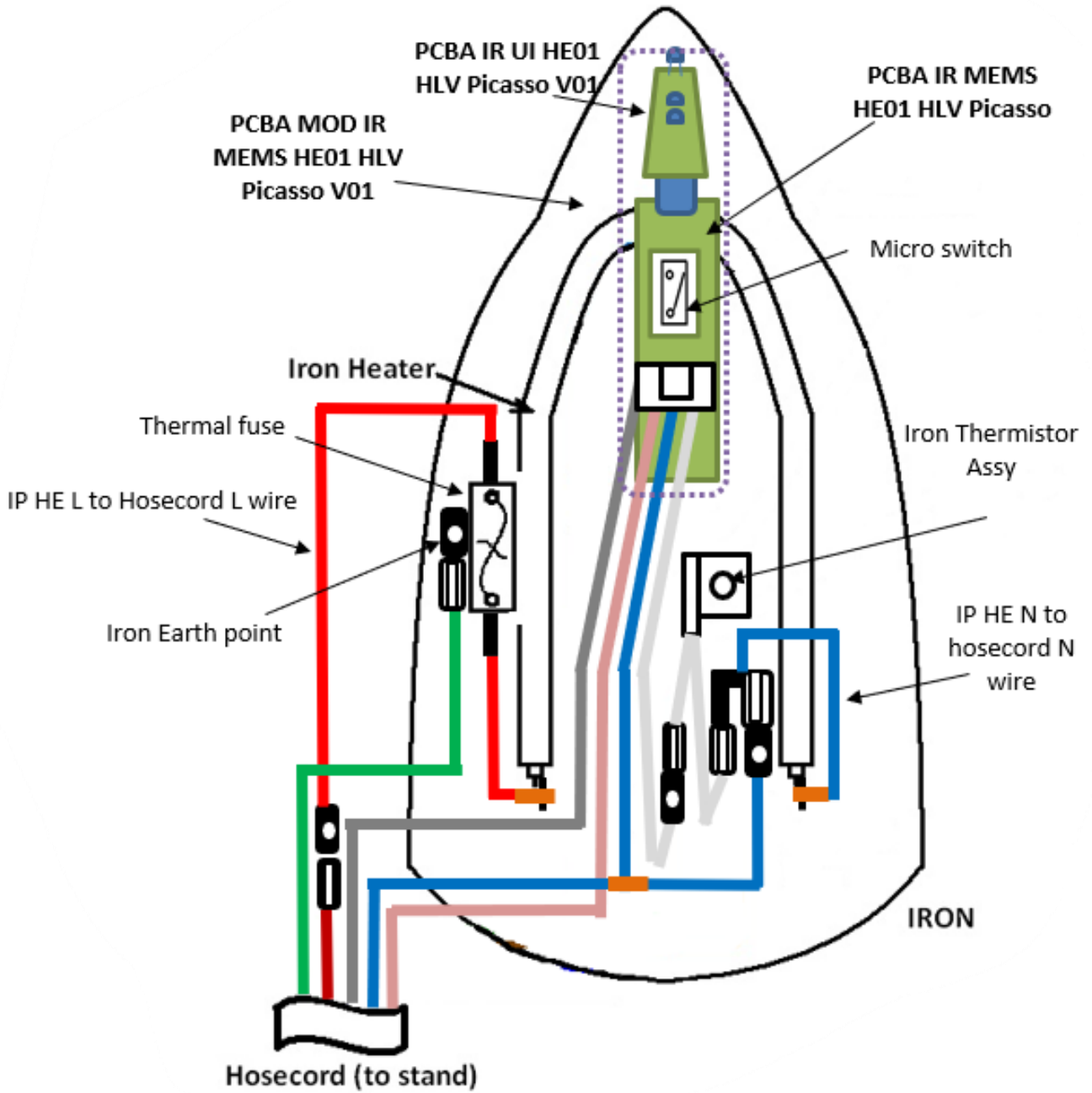


### Perform FMT

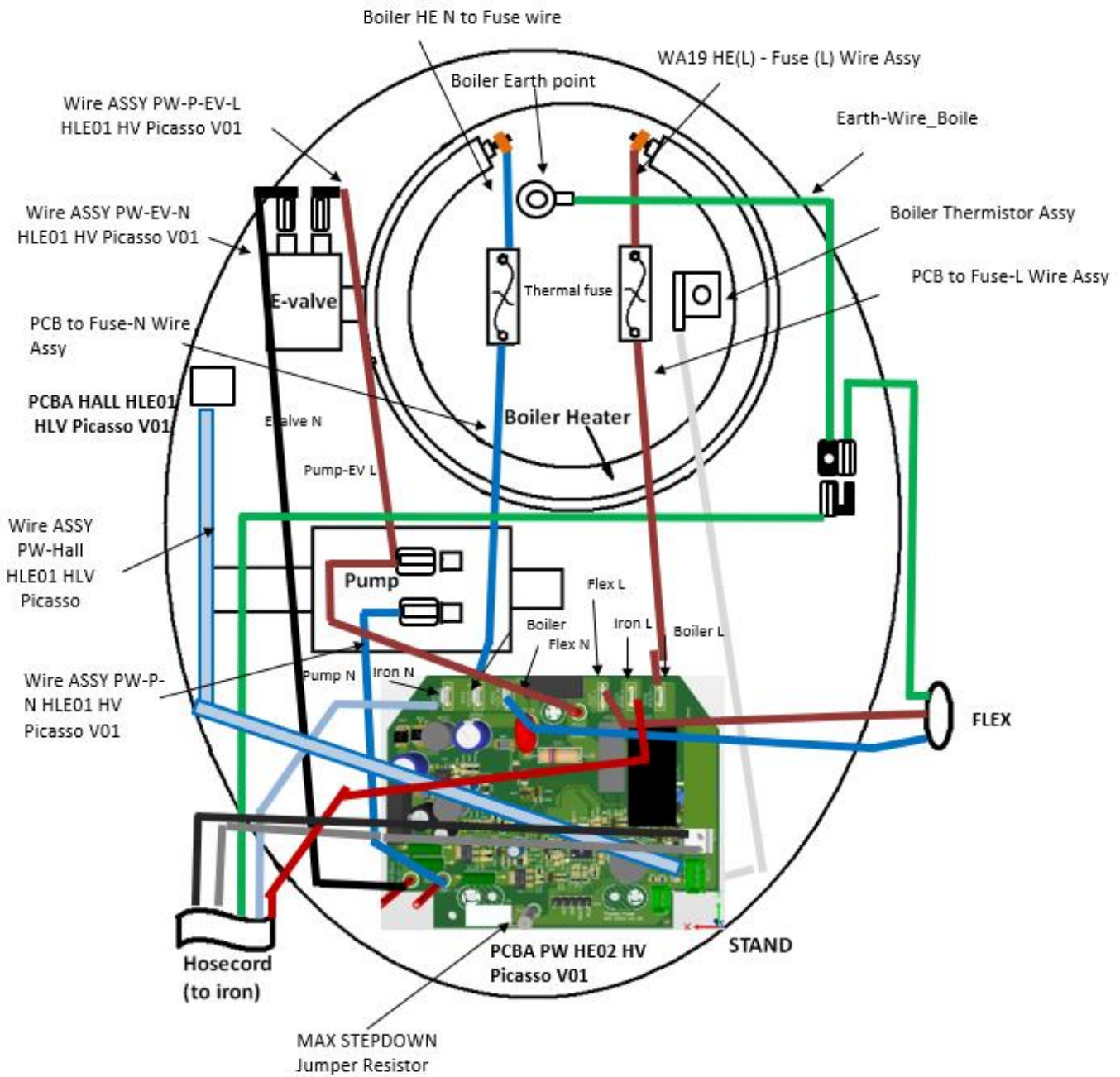


## 8. Wiring Diagram

### Iron (HE)



# Stand HE

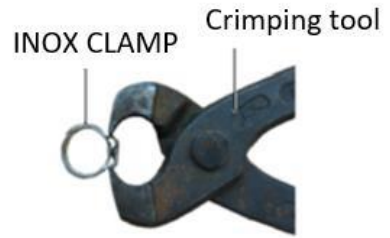


## 9. Tools & Special Instructions Disassembly and Assembly

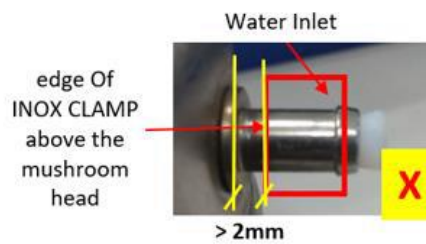
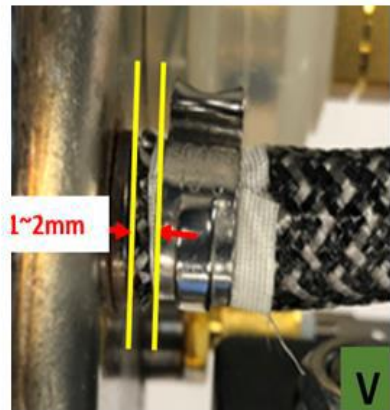
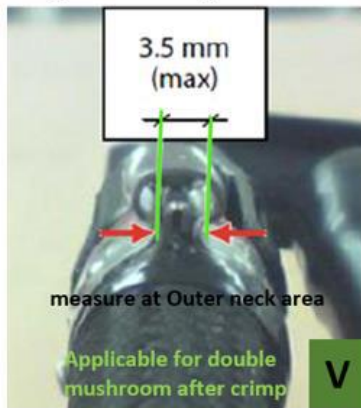
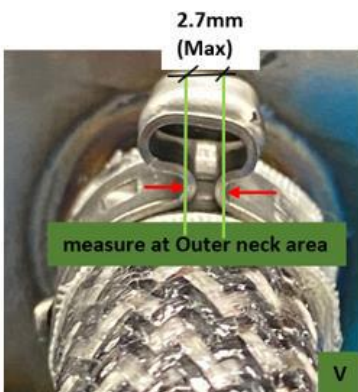
### Crimping INOX CLAMP

Should BOILER ASSY, DE-AIR VALVE or BRAIDED HOSE BOILER are replaced, INOX Clamp must be replaced and following instruction to be followed.

Tool required: KNIPEX Crimp tool

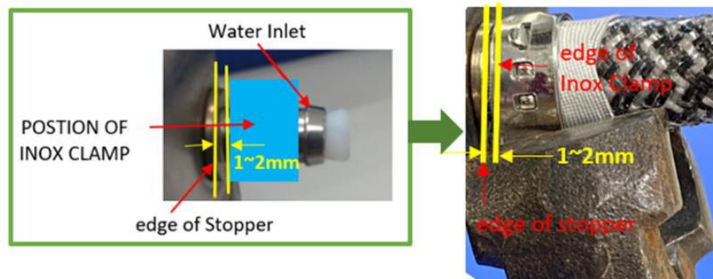


Refer to picture below for good & rejected Crimp



### CAUTION:

- When crimping on plastic part such as DE-AIR VALVE, avoid over crimping to prevent damage (crack) to plastic part.
- When crimping at the Boiler side (Water Inlet), ensure correct position of INOX CLAMP to prevent Rubber Hose damage/tear. INOX CLAMP must be positioned in the middle of tape & distance from stopper 1~2mm per picture below.



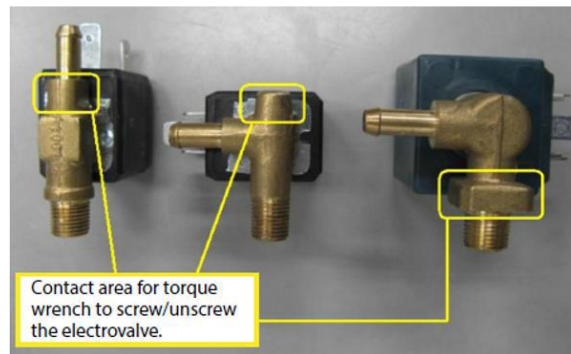
## Replacing E-Valve

To prevent damage to the ELECTROVALVE during service activity, the following to be observed during disassembly & assembly.

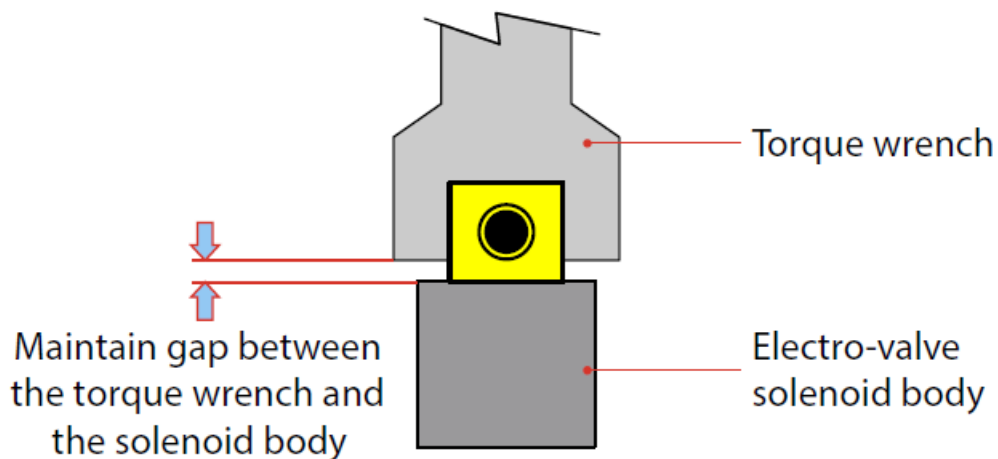
**Tool required: Torque wrench (set to 6Kgf)**



**CAUTION #1:** The torque wrench engagement is allowed ONLY at the yellow box locations in below picture.



**CAUTION #2:** Ensure torque wrench jaw does not contact the solenoid body.



## 10. Disassembly Instructions for Top Five Service Parts

### 10.1 Disassembly Instructions – Power PCBA (Stand side)

- A. Remove the Water Tank Assy (25) & Turn the Rinse Cap Assy anticlockwise to remove (22)



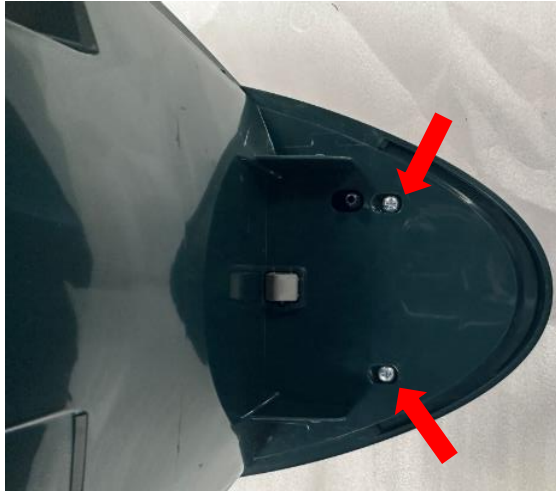
#### Take out Rinse Bush



- B. Lift up the Tray rubber and unscrew L (3x) to remove Tray Assy (17)



C. Turn over the set and unscrew M (2x) from Stand Top Assy (13)



**Caution: Ensure the tray assy on a soft surface to prevent scratches on the plastic surface.**

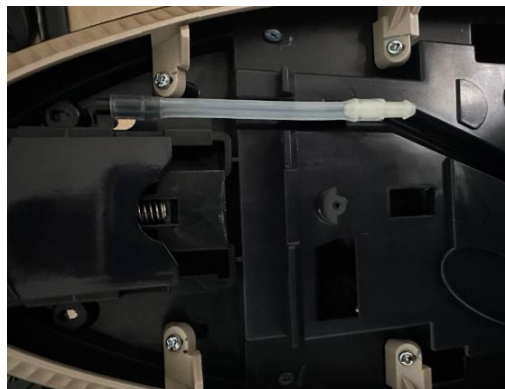
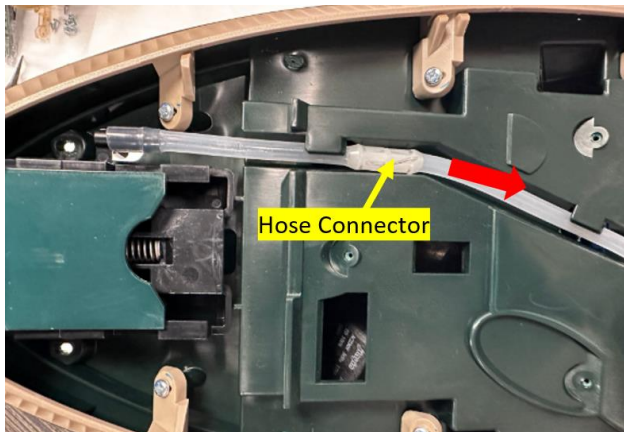
D. Unscrew N (6x) from Stand Bottom Assy (3)



E. Slide up and remove the Tray Assy (17)



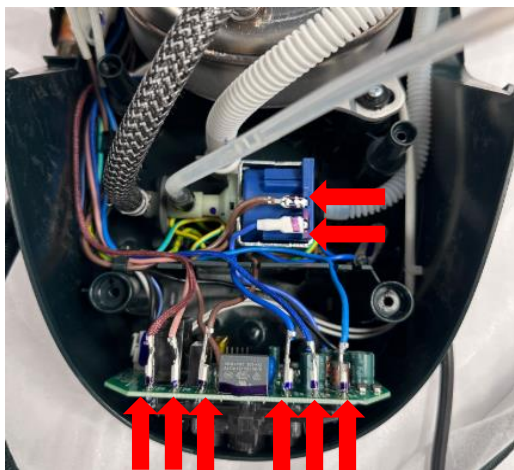
F. Remove De-air tube from the hose connector as shown.



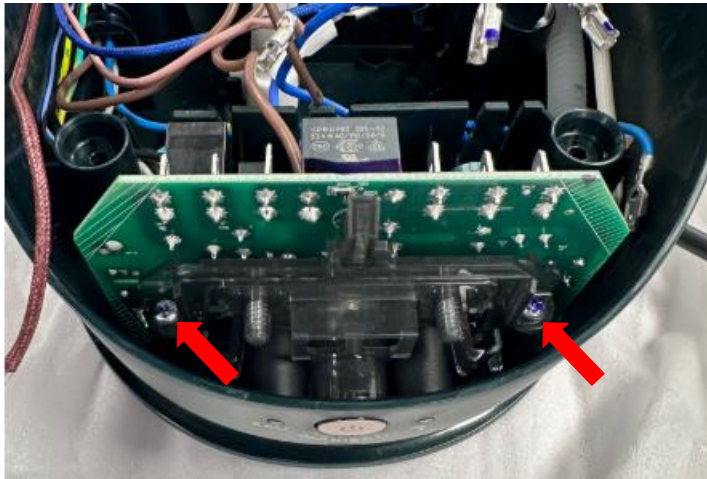
G. Remove the Stand Top Assy (13)



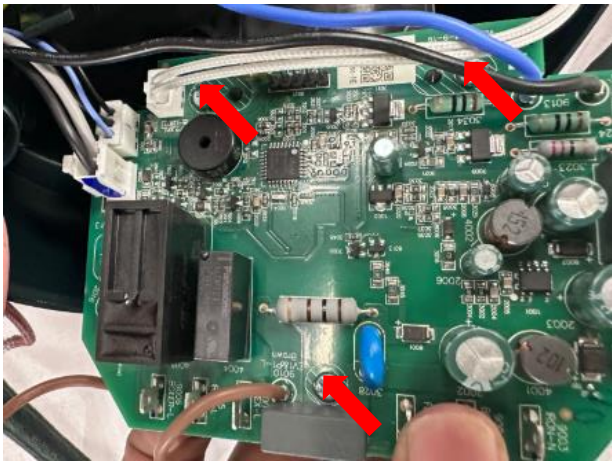
Remove all the wires and quick connectors from PCBA & Pump Assy as shown



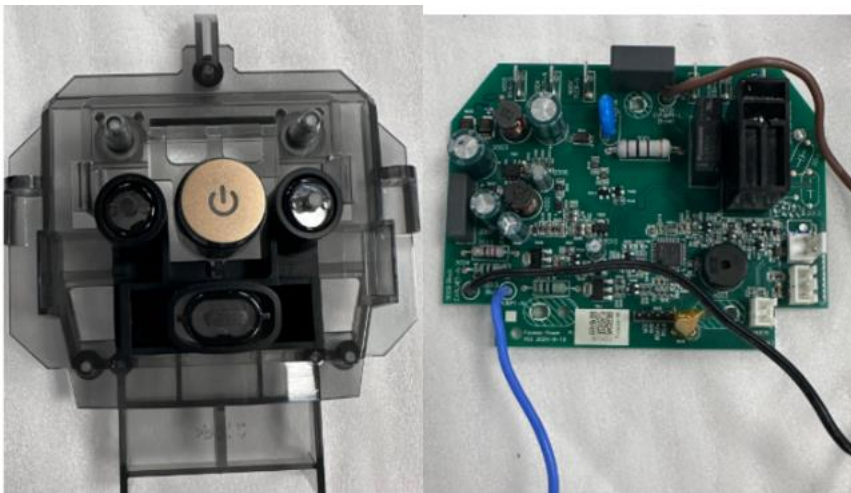
H. Unscrew O (2x) from Stand Bottom Assy



Unplug connectors and Unscrew P (3x) from Light Guide Assy (19)



Take out PCBA Assy (33) from Light Guide Assy (19)



10.2 Disassembly Instructions – Pump Assy (Stand side)

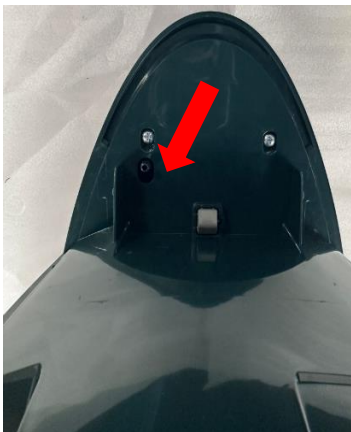
A. Remove the Water Tank Assy (25) & Turn the Rinse Cap Assy anticlockwise to remove (22)



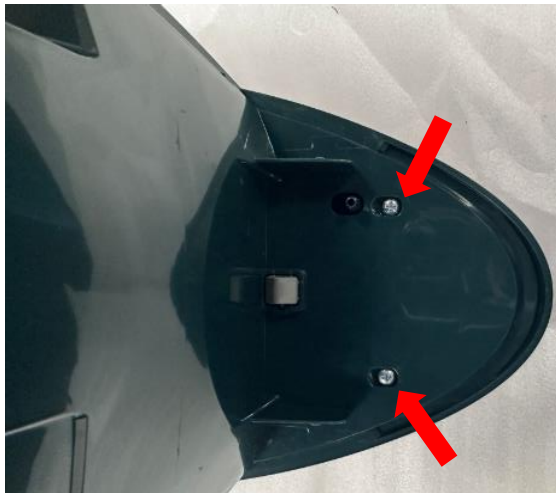
Take out Rinse Bush



B. Lift up the Tray rubber and unscrew L (3x) to remove Tray Assy (17)



C. Turn over the set and unscrew M (2x) from Stand Top Assy (13)



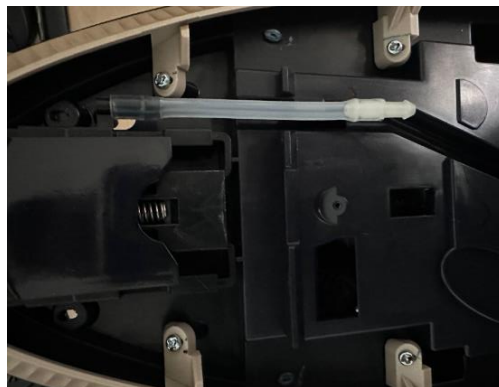
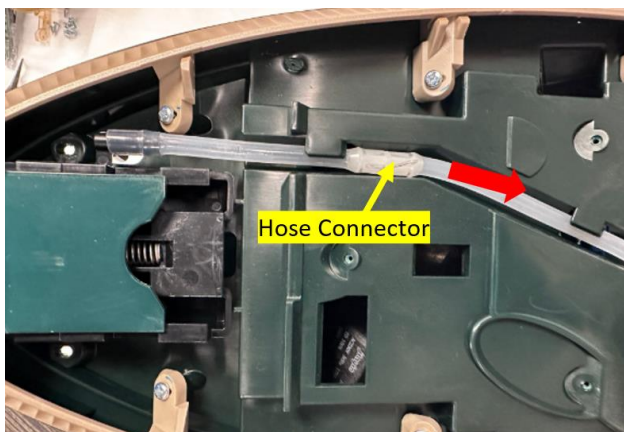
D. Unscrew N (6x) from Stand Bottom Assy (3)



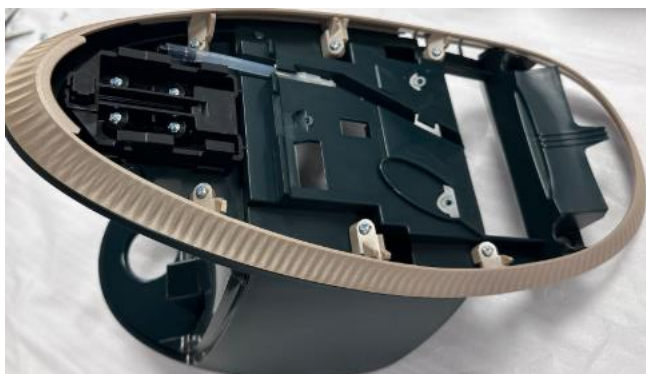
E. Slide up and remove the Tray Assy (17)



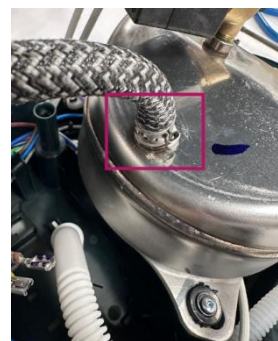
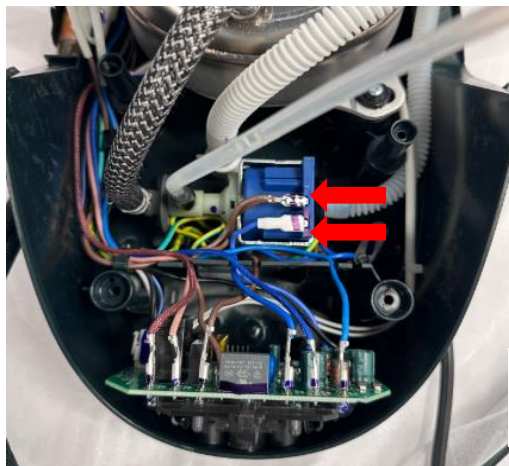
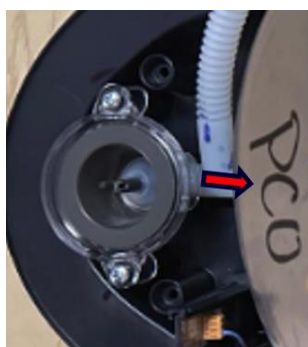
F. Remove the De-air tube from the hose connector as shown.



G. Remove the Stand Top Assy (13)

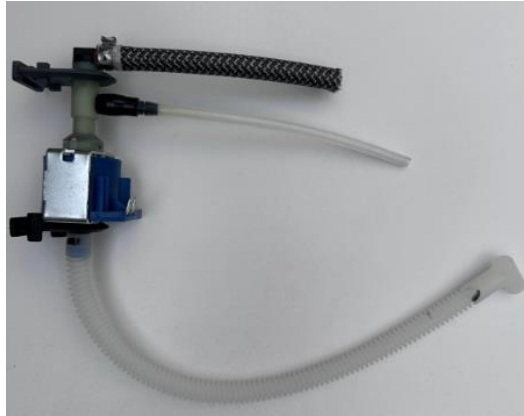


H. Unplug inlet tube from water inlet coupling and remove wires from Pump Assy & Remove Braided tube Inox clamp from Boiler Assy as shown



**CAUTION: ENSURE DO NOT DAMAGE THE BRAIDED TUBE WHILE REMOVING INOX CLAMP**

Turn the set and push the pump support towards the slot and remove the Pump Assy



### 10.3 Disassembly Instructions – E-Valve (Stand side)

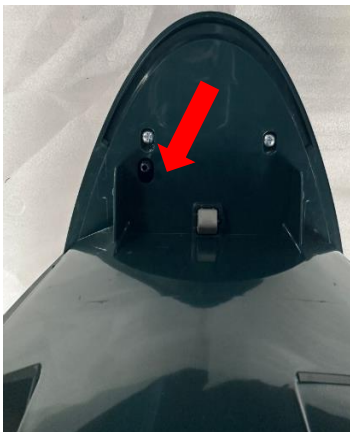
A. Remove the Water Tank Assy (25) & Turn the Rinse Cap Assy anticlockwise to remove (22)



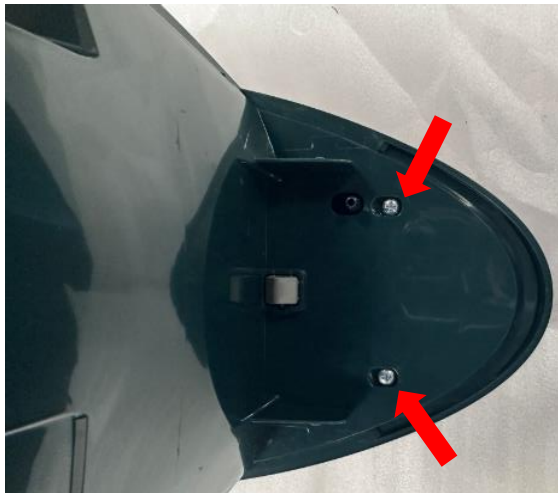
Take out Rinse Bush



B. Lift up the Tray rubber and unscrew L (3x) to remove Tray Assy (17)



C. Turn over the set and unscrew M (2x) from Stand Top Assy (13)



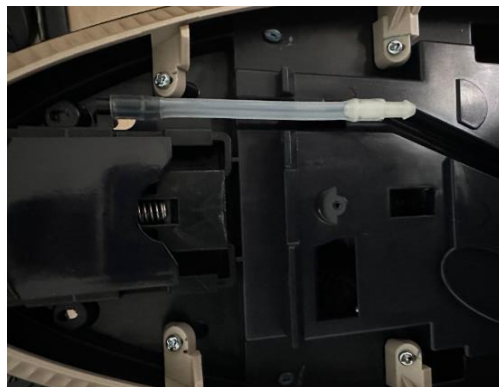
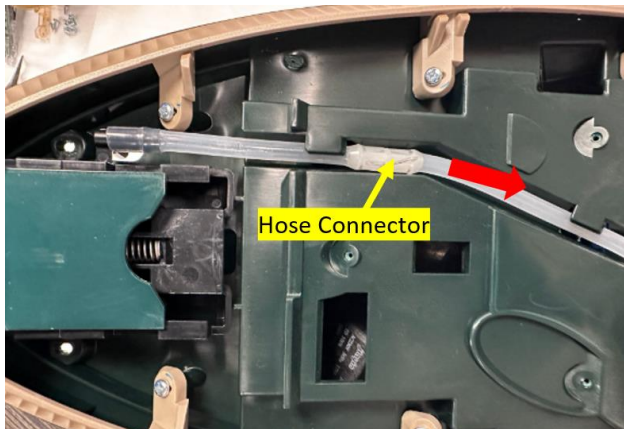
D. Unscrew N (6x) from Stand Bottom Assy (3)



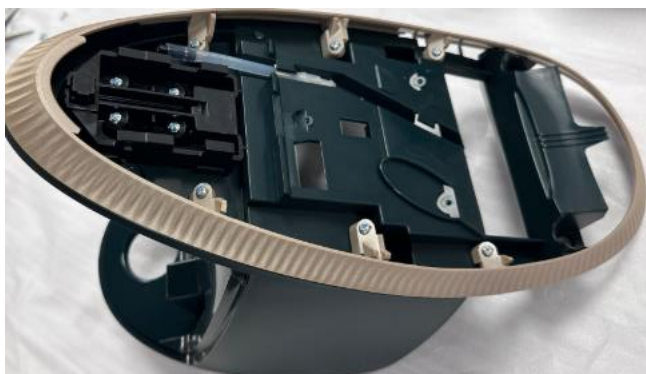
E. Slide up and remove the Tray Assy (17)



F. Remove the De-air tube from the hose connector as shown.



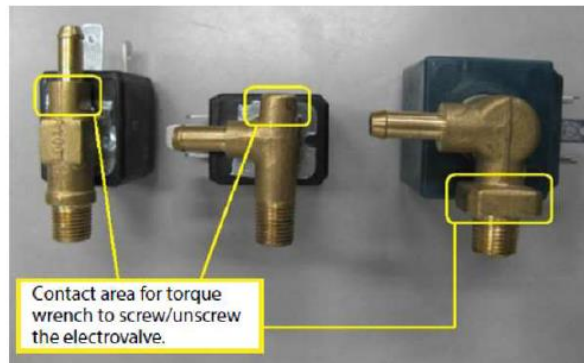
G. Remove the Stand Top Assy (13)



Remove the quick connectors from E-Valve and remove the Hose clip as shown.

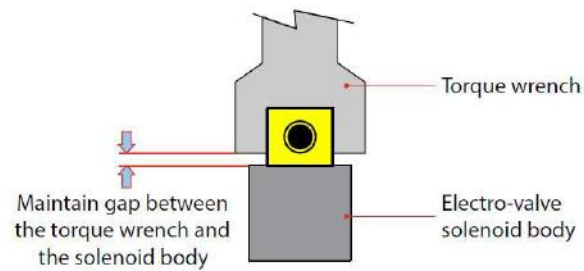


Removing the Combi E-Valve Tool required and Unscrew method.



Caution 1. The torque wrench engagement is allowed only at the yellow box locations in the above picture.

Caution 2: Ensure the torque wrench jaw does not contact the solenoid body.



Disassembled Combi E-Valve from Boiler Assy.



## 10.4 Disassembly Instructions – Boiler Assy (Stand side)

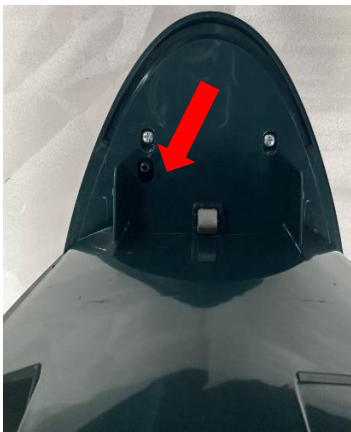
- A. Remove the Water Tank Assy (25) & Turn the Rinse Cap Assy anticlockwise to remove (22)



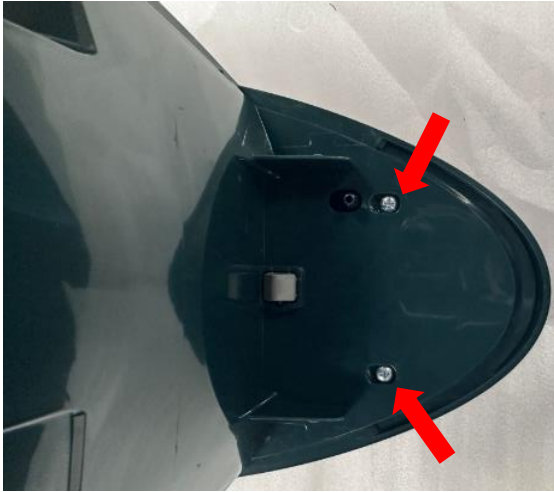
Take out Rinse Bush



- B. Lift up the Tray rubber and unscrew L (3x) to remove Tray Assy (17)



C. Turn over the set and unscrew M (2x) from Stand Top Assy (13)



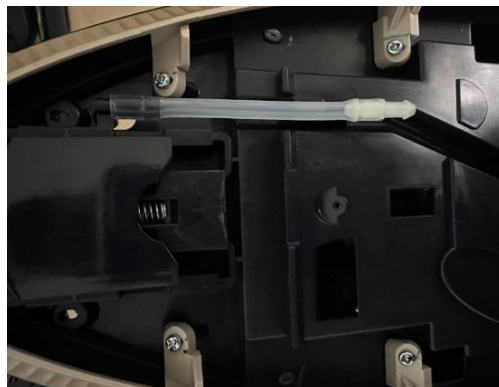
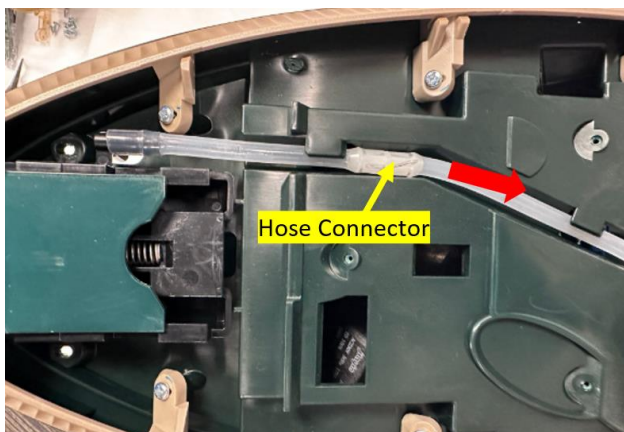
D. Unscrew N (6x) from Stand Bottom Assy (3)



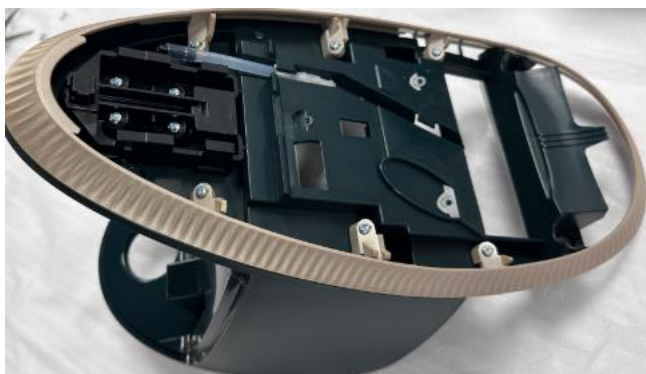
E. Slide up and remove the Tray Assy (17)



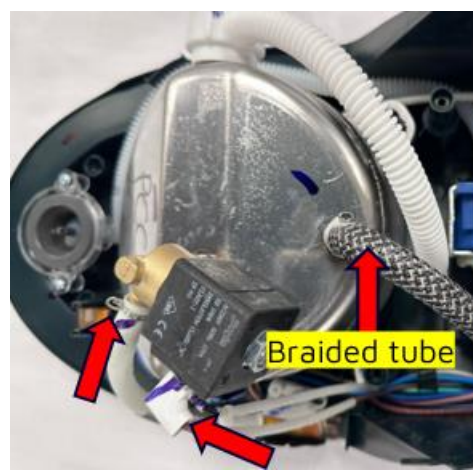
F. Remove the De-air tube from the hose connector as shown.



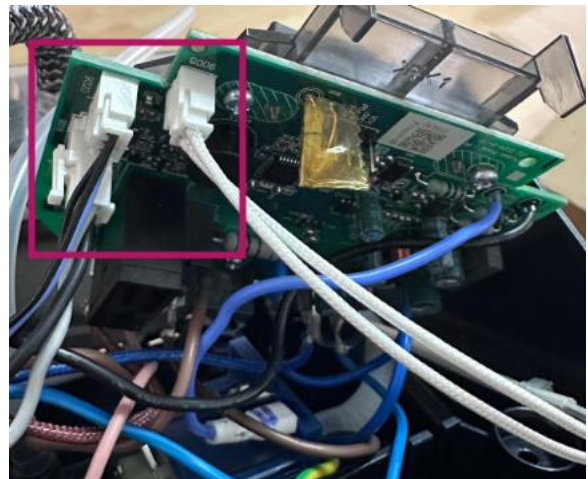
G. Remove the Stand Top Assy (13)



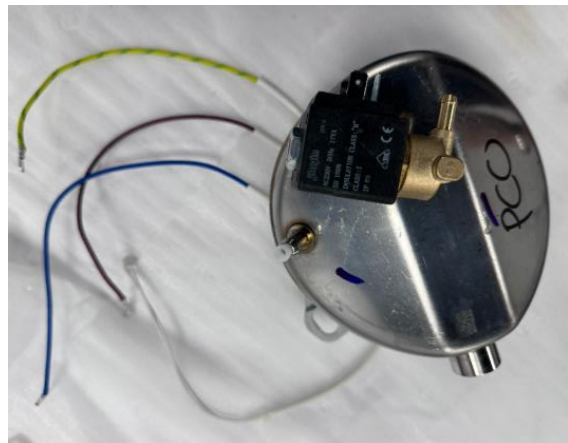
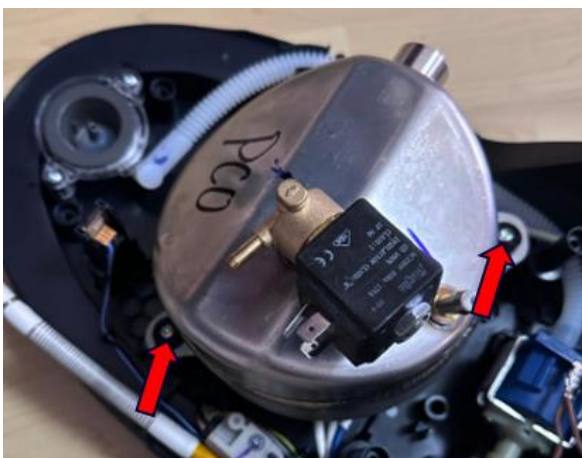
Remove all the quick connectors from boiler assy and Hose clip from E-Valve and detach the hose cord tube as shown. Then unclamp Inox clamp from braided tube and pull out



H. Unscrew O (2x) light guide Assy and remove the boiler wires connectors as shown



I. Unscrew T (2x) from Stand Bottom Assy & remove the Boiler Assy from Stand bottom



## 10.5 Disassembly Instructions – Soleplate Assy (Iron Assy)

A. Unscrew A (1x) from the Housing.

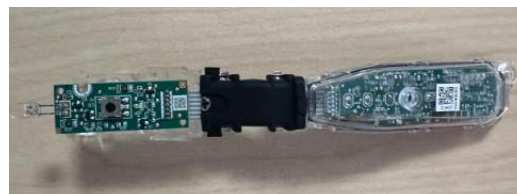
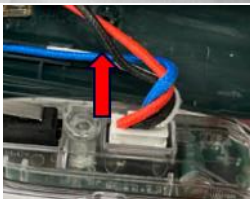


B. Remove Inlay Assy from Iron housing

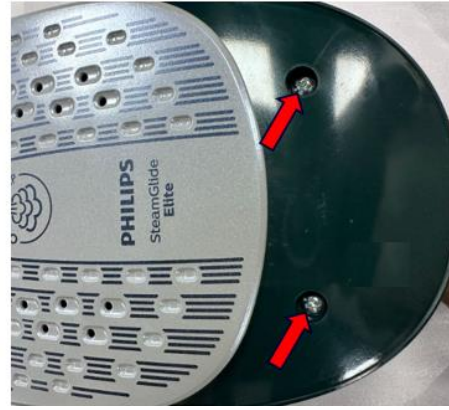
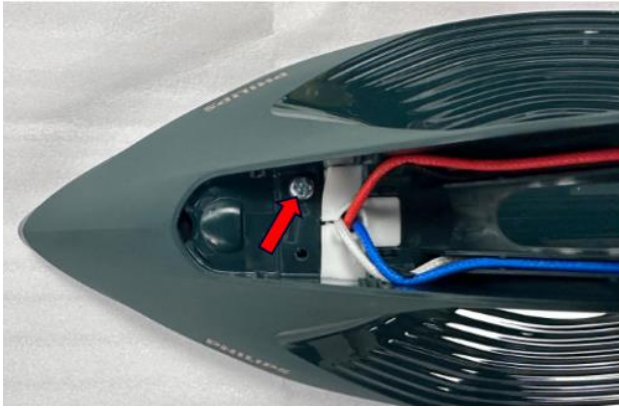


Caution: If any damage occurs to the Housing or Inlay during the dismantling of the Inlay, it is essential to replace the defective parts as necessary.

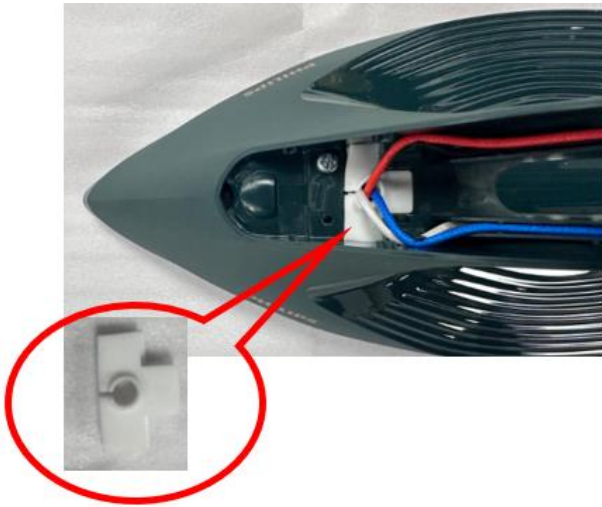
C. Unscrew B, C, D, and E from the Iron housing. Also, unplug the 3 pin connector from Iron PCBA and take out the Iron PCBA.



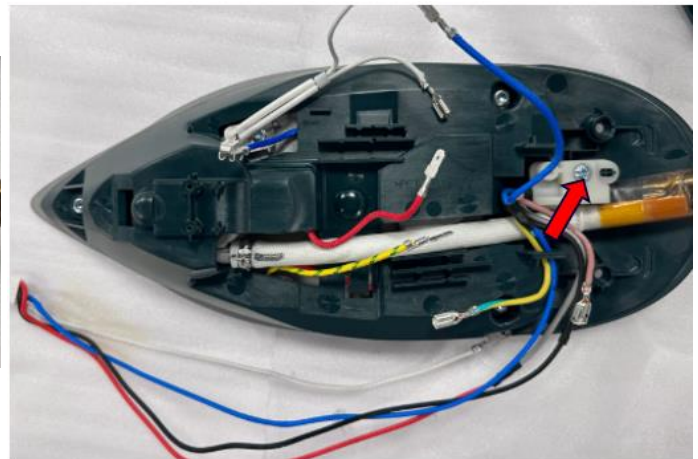
D. Unscrew F (1x) from housing and unscrew G (2x) from cover as shown



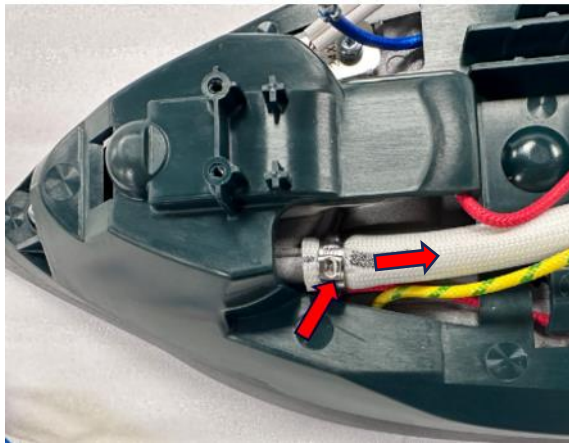
Remove the wire seal & pull the housing from cover



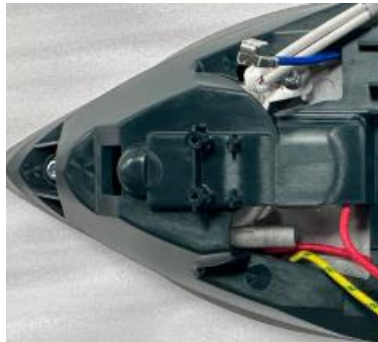
E. Remove all the quick connectors and unscrew K (1x)



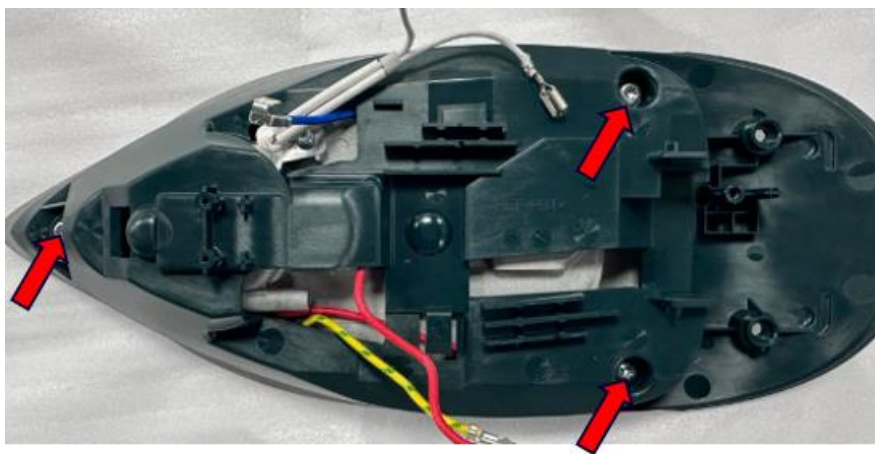
F. Remove Inox clamp from Hose cord tube and remove the hose cord tube



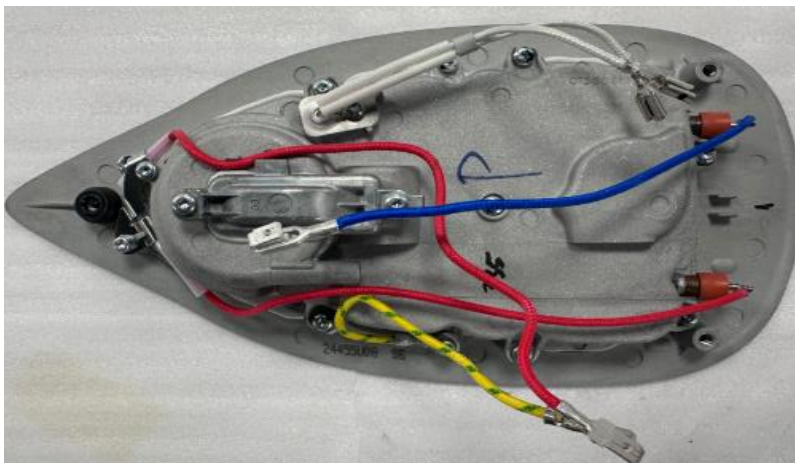
**CAUTION: ENSURE DO NOT DAMAGE THE HOSE CORD TUBE WHILE REMOVING INOX CLAMP**



G. Unscrew I (2x) and J (1x) from sole plate



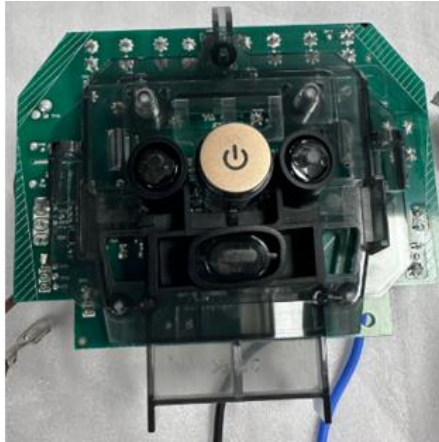
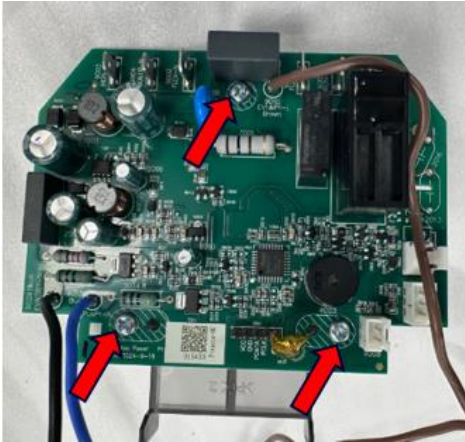
Disassembled Sole plate Assy



## 11. Assembly Instructions for Top Five Service Parts

### 11.1 Assembly Instruction Power PCBA (Stand side)

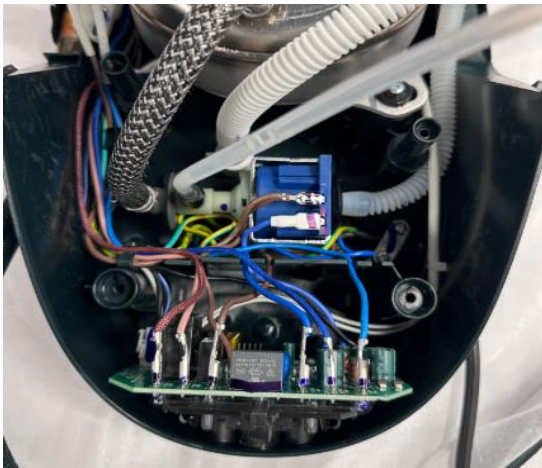
- A. Assemble the Power PCBA (33) & Light Guide Assy (19) using screw P (3x)  
**Torque 5 ±1 Kgf** as shown



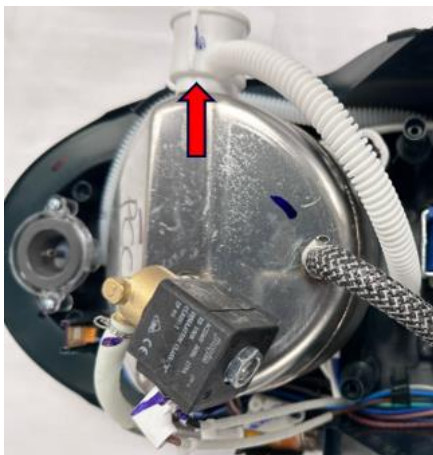
Ensure that the light mask is properly positioned on the light guide Assy as shown.



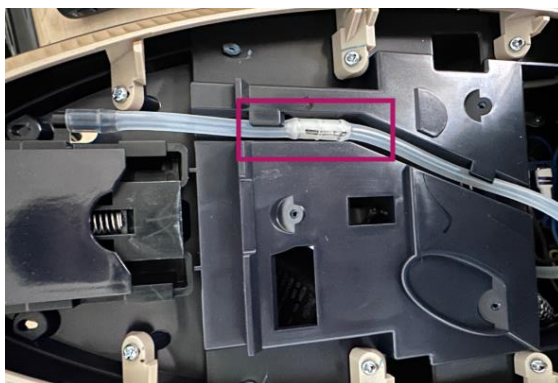
- B. Connect all the quick connectors to the PCBA as per the wiring diagram & Fasten screw O (2x) **Torque 5 ±1 Kgf.** to the Stand Bottom as shown.



- C. Ensure the Rinse outlet tube rib is aligned as shown below, also the rib is aligned with the Stand top Assy slot as shown



D. Connect the De-air tube to the hose connector and dress the tube as shown



E. Assemble Tray Assy to the Stand top Assy using screw L (3x) **Torque 5 ±1 Kgf.**  
**Note: Ensure Tray rubber is fully seated on the Tray as shown.**

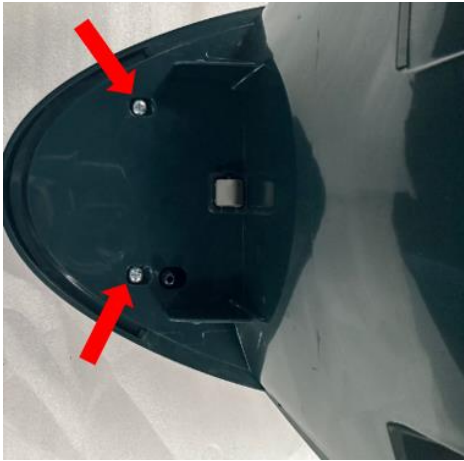


**Note: Before fastening the screw on the stand top assembly, ensure that the rinse bush is properly aligned with the rinse outlet, as shown**



**Ensure the Rinse bush groove aligns with the Rinse outlet tube as shown**

F. Assemble Stand top Assy together with Stand Bottom Assy & Tray Assy using screw N (6x) **Torque 9 ±1 Kgf.** and screw M (2x) **Torque 9 ±1 Kgf**

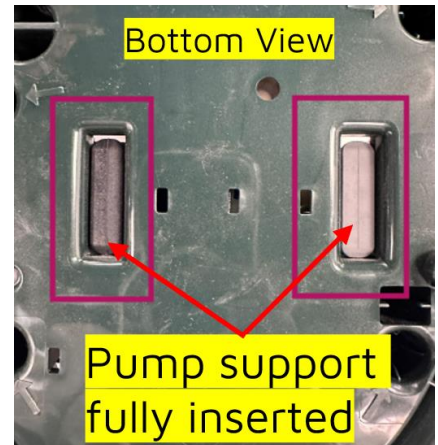
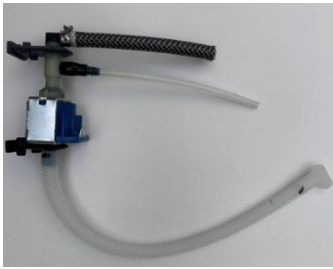


G. Assemble the Rinse cap Assy to the boiler by rotating it clockwise and ensuring fully tightened. Then, reinstall the water tank Assy.

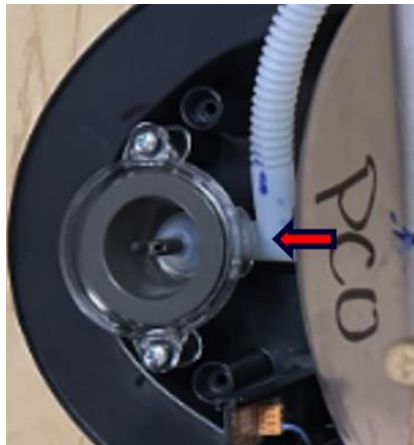
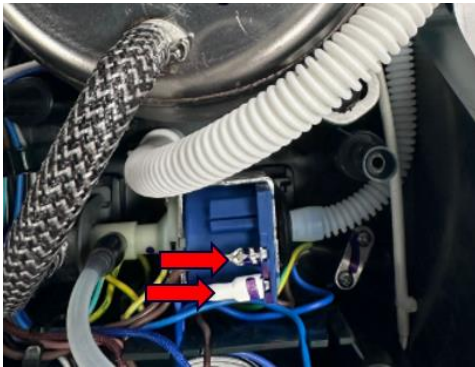


## 11.2 Assembly Instruction Pump Assy (Stand side)

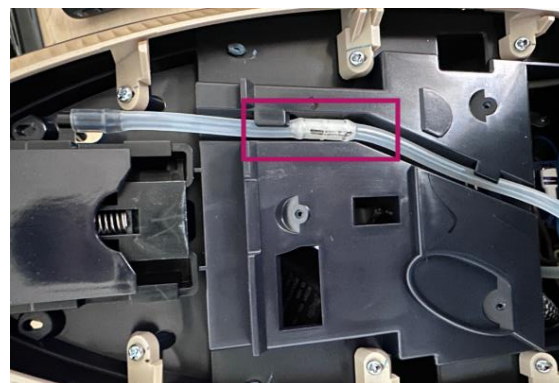
- A. Install the Pump Assy into the slot provided on the stand bottom, ensuring the pump support is fully inserted as shown



- B. Connect the quick connectors (refer to wiring diagram) to the pump as shown, then secure the braided tube to the boiler using an Inox clamp. Then connect the inlet tube to the water inlet coupling



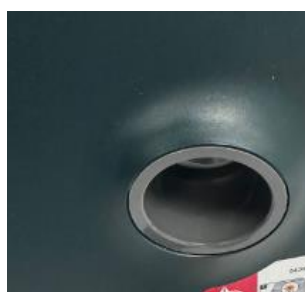
- C. Connect the De-air tube to the hose connector and dress the tube as shown



D. Assemble Tray Assy to the Stand top Assy using screw L (3x) **Torque 5 ±1 Kgf.**  
**Note: Ensure Tray rubber is fully seated on the Tray as shown.**



**Note: Before fastening the screw on the stand top assembly, ensure that the rinse bush is properly aligned with the rinse outlet, as shown**



**Ensure the Rinse bush groove aligns with the Rinse outlet tube as shown**

E. Assemble Stand top Assy together with Stand Bottom Assy & Tray Assy using screw N (6x) **Torque 9 ±1 Kgf.** and screw M (2x) **Torque 9 ±1 Kgf**



F. Assemble the Rinse cap Assy to the boiler by rotating it clockwise and ensuring fully tightened. Then, reinstall the water tank Assy.



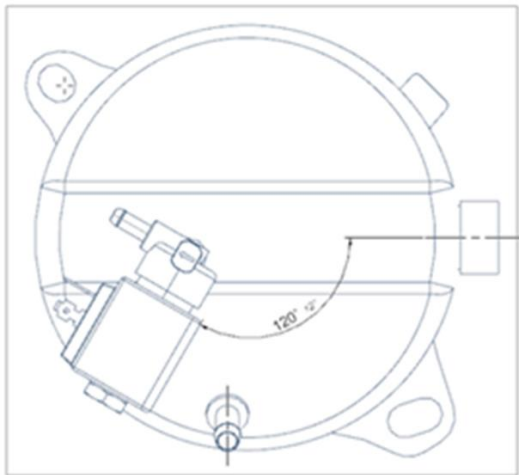
### 11.3 Assembly Instruction E-valve (Stand side)

A. Install the E-valve to the Boiler (Refer Page 17 for instruction).

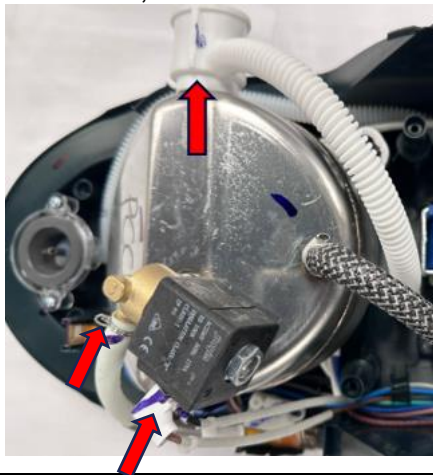
Note: Ensure to apply loctite on E-valve thread



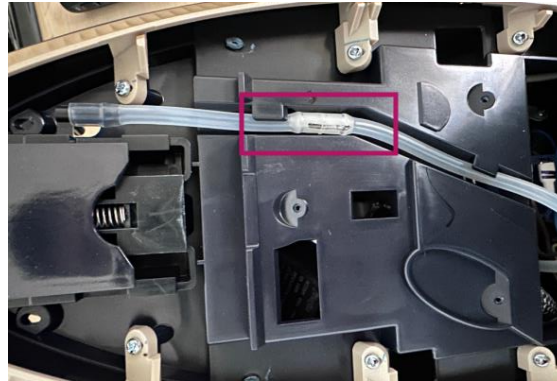
Note: Ensure that E-valve after tightening orientation should be 120-degree angle to install the hosecord tube onto the Boiler Assy.



B. Connect the quick connectors (Refer wiring diagram), then connect hose cord tube to the E-valve and secure using hose clip. Then install the rinse outlet tube to the Boiler collar also, the rinse outlet tube rib is aligned with the Stand top Assy slot as shown



C. Connect the De-air tube to the hose connector and dress the tube as shown



D. Assemble Tray Assy to the Stand top Assy using screw L (3x) **Torque 5 ±1 Kgf.**

**Note: Ensure Tray rubber is fully seated on the Tray as shown.**

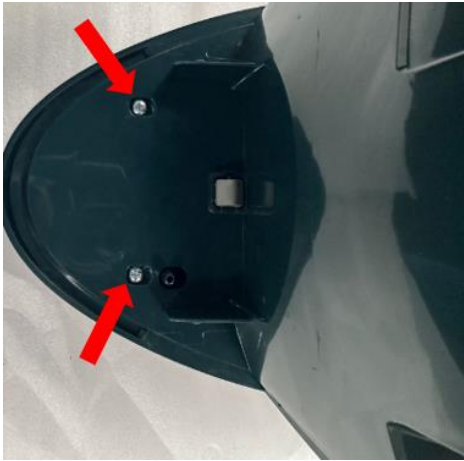


**Note: Before fastening the screw on the stand top assembly, ensure that the rinse bush is properly aligned with the rinse outlet, as shown**



**Ensure the Rinse bush groove aligns with the Rinse outlet tube as shown**

E. Assemble Stand top Assy together with Stand Bottom Assy & Tray Assy using screw N (6x) **Torque 9 ±1 Kgf.** and screw M (2x) **Torque 9 ±1 Kgf**

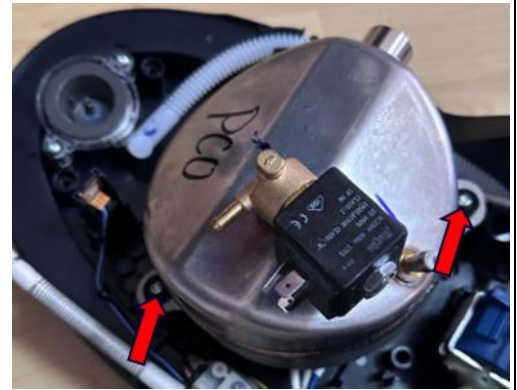
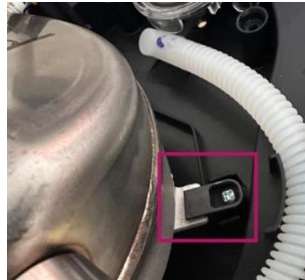
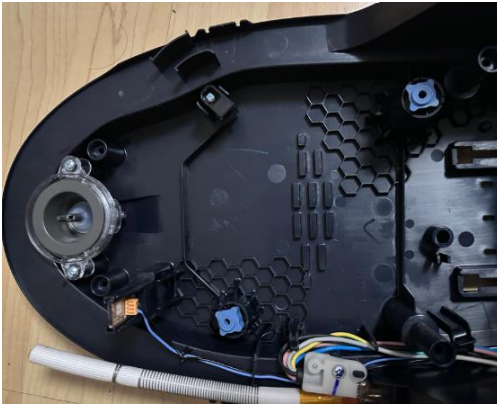


F. Assemble the Rinse cap Assy to the boiler by rotating it clockwise and ensuring fully tightened. Then, reinstall the water tank Assy.

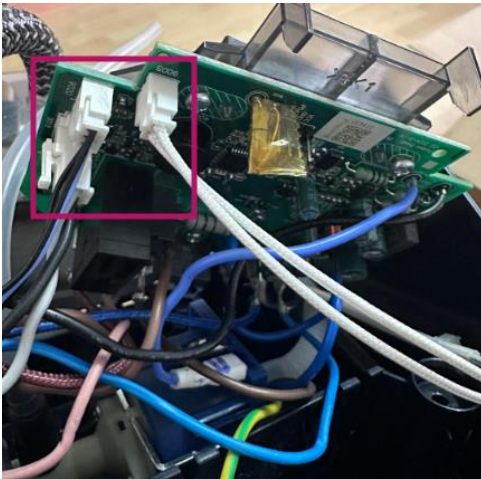


#### 11.4 Assembly Instruction Boiler Assy (Stand side)

- A. Ensure the boiler bracket is correctly positioned on the stand bottom, and place boiler assy on the boiler bracket. Ensure the boiler must be insert the holder as shown, then fasten screw T (2x) as shown **Torque 10 ±1 Kgf.**



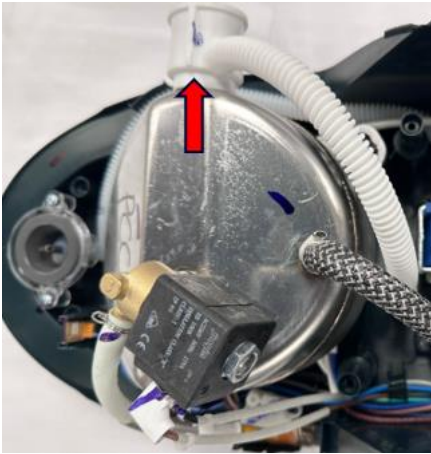
- B. Connect all the wires from boiler assy to power PCBA (Refer wiring diagram) and assemble light guide assy, fasten screw O (2x) to the stand bottom **Torque 5 ±1 Kgf.**



- C. Connect all the wires to the E-Valve, then attach the hose cord tube and securely reinstall the hose clip as shown. Plug in pump assy braided hose to the boiler water inlet and clamp securely using Inox clamp (Refer page 16 for instruction)



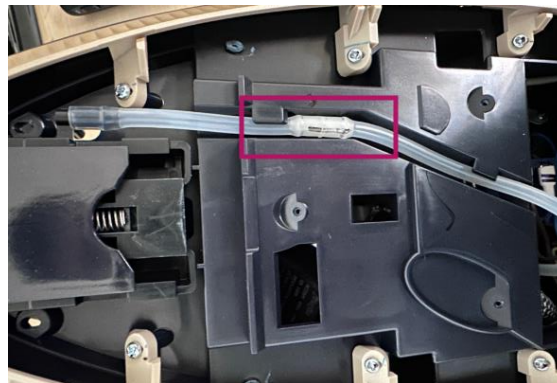
D. Ensure the Rinse outlet tube rib is aligned as shown below, also the rib is aligned with the Stand top Assy slot as shown.



E. Before assembling the stand top, ensure all the wires are properly arranged into the ribs provided on the stand bottom



F. Connect the De-air tube to the hose connector and dress the tube as shown

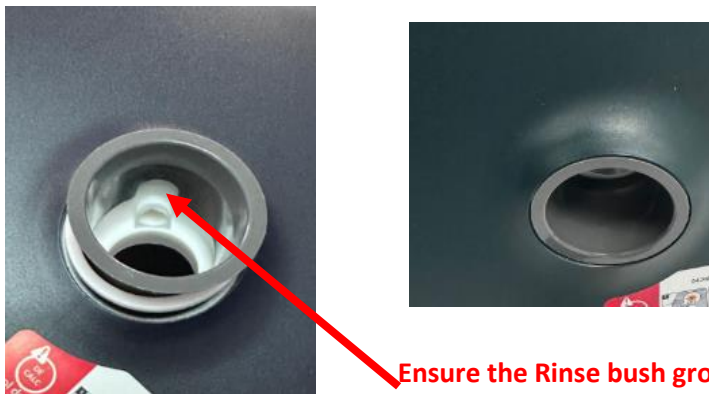


G. Assemble Tray Assy to the Stand top Assy using screw L (3x) **Torque 5 ±1 Kgf.**

**Note: Ensure Tray rubber is fully seated on the Tray as shown.**

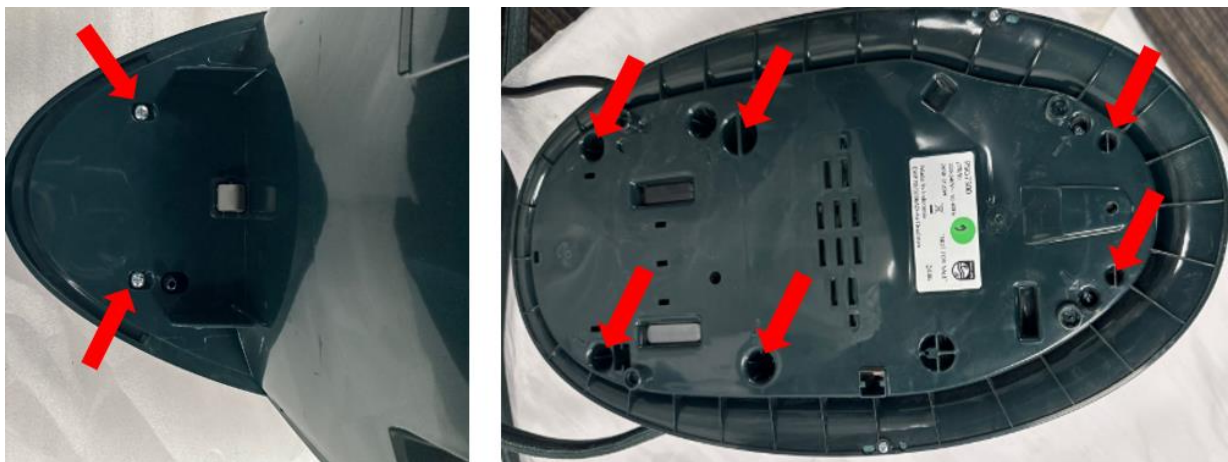


**Note: Before fastening the screw on the stand top assembly, ensure that the rinse bush is properly aligned with the rinse outlet, as shown**



**Ensure the Rinse bush groove aligns with the Rinse outlet tube as shown**

H. Assemble Stand top Assy together with Stand Bottom Assy & Tray Assy using screw N (6x) **Torque 9 ±1 Kgf.** and screw M (2x) **Torque 9 ±1 Kgf.**



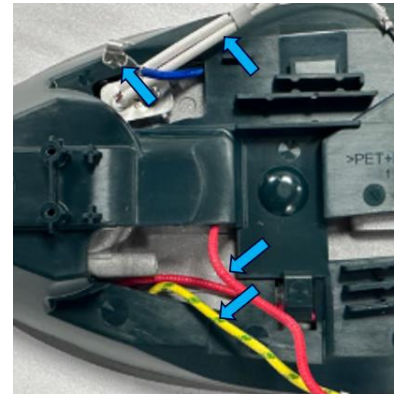
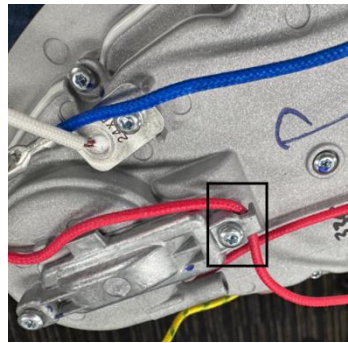
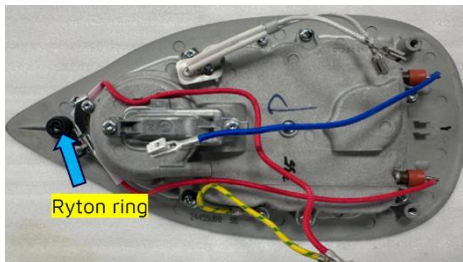
- I. Assemble the Rinse cap Assy to the boiler by rotating it clockwise and ensuring fully tightened. Then, reinstall the water tank Assy.



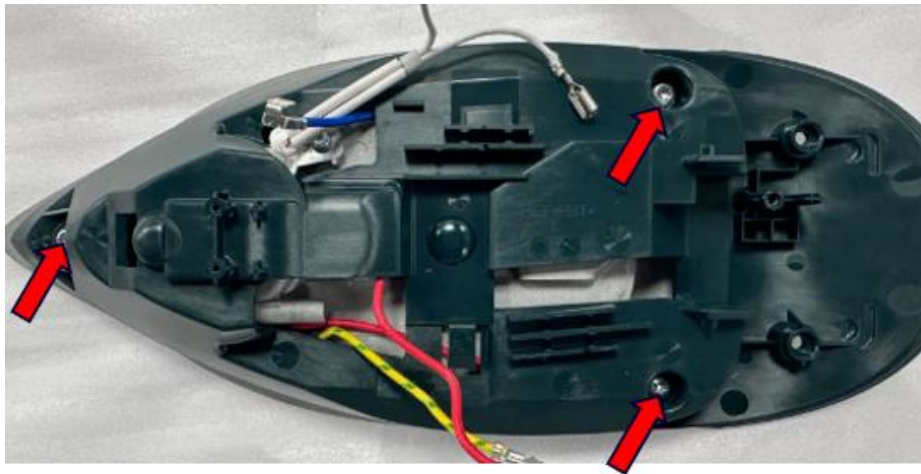
## 11.5 Assembly Instruction Sole plate Assy (Iron Assy)

- A. Assemble Cover (101) to the Soleplate Assy (100), ensure all wires from Soleplate Assy routed as shown below, and ensure Ryton ring should be placed on Soleplate Assy as shown

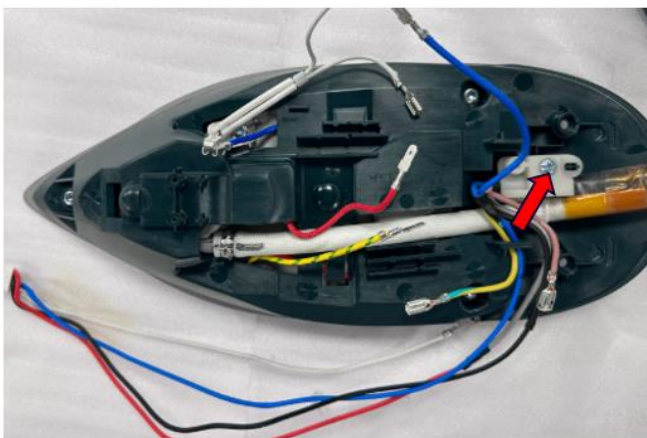
Note: Ensure the red color wire should be routed via the hook as shown



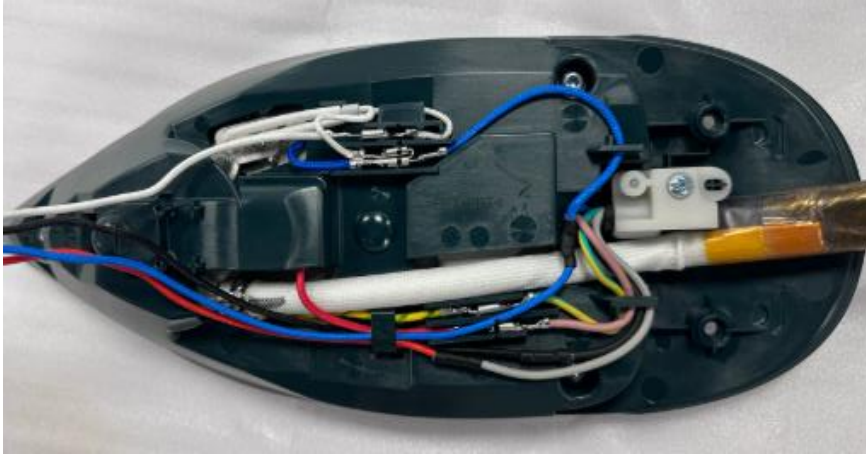
- B. Fasten screw I (2x) & screw J (1x), to the Soleplate Assy as shown **Torque 19 ±1 Kgf.**  
Note: Ensure must screw with mica washer



- C. Fasten screw K (1x) **Torque 9 ±1 Kgf.** from hosecord to the cover as shown, then plugin hosecord tube to Soleplate Assy and crimp using the Inox clamp (Refer page 16 for instruction).



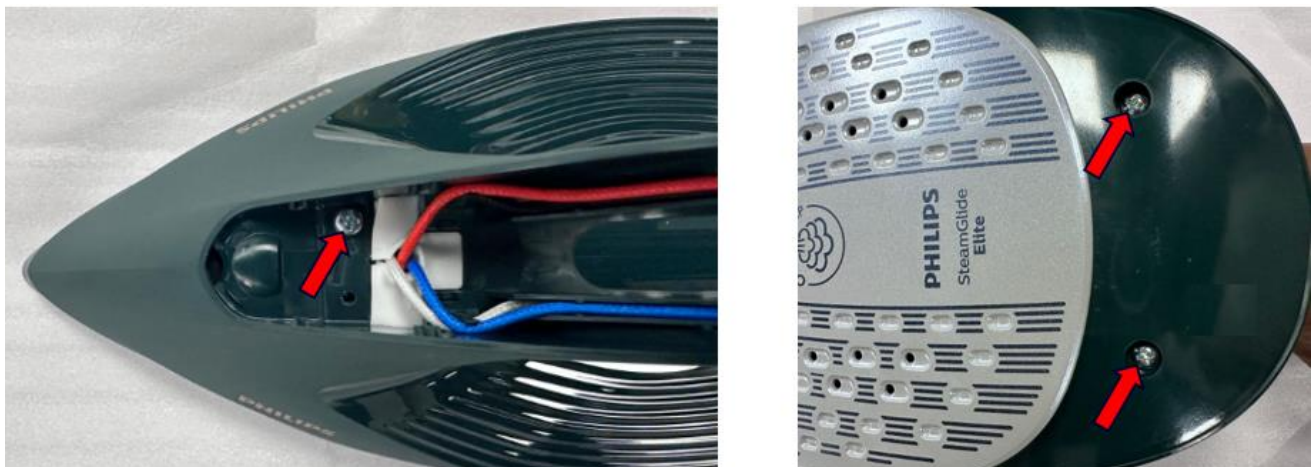
D. Connect all the wires from the soleplate and hose cord wires as per the wiring diagram



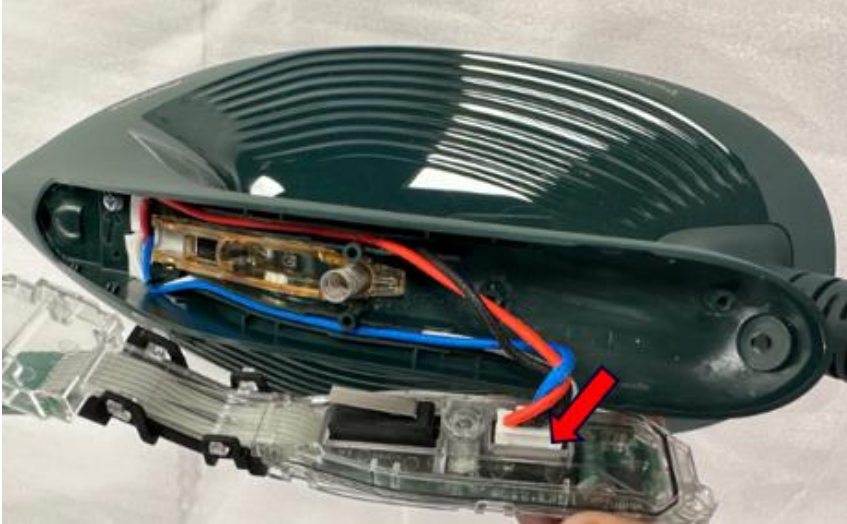
E. Assemble the housing to the cover as shown, then place the wire seal as shown  
Note: Ensure before assembling the housing rubber bung should be placed on housing as shown



F. Fasten screw F (1x) **Torque 5 ±1 Kgf.** and screw G (2x) as shown **Torque 9 ±1 Kgf.**



G. Tuck in the wires to the housing and connect the 3-pin connector to the Iron PCBA as shown



H. Fasten screw E (1x) **Torque 5 ±1 Kgf.** PCBA holder to the housing as shown



I. Fasten screw B, C, & D (Each 1x) **Torque 5 ±1 Kgf.** Iron PCBA to the housing as shown



J. Assemble the Inlay Assy as shown



K. Fasten screw A (1x) **Torque 9 ±1 Kgf.** housing to Inlay Assy as shown



Caution: Make sure the inlay assy fully inserted to the housing

## 12. Disassembly Instruction other service parts (Stand Assy)

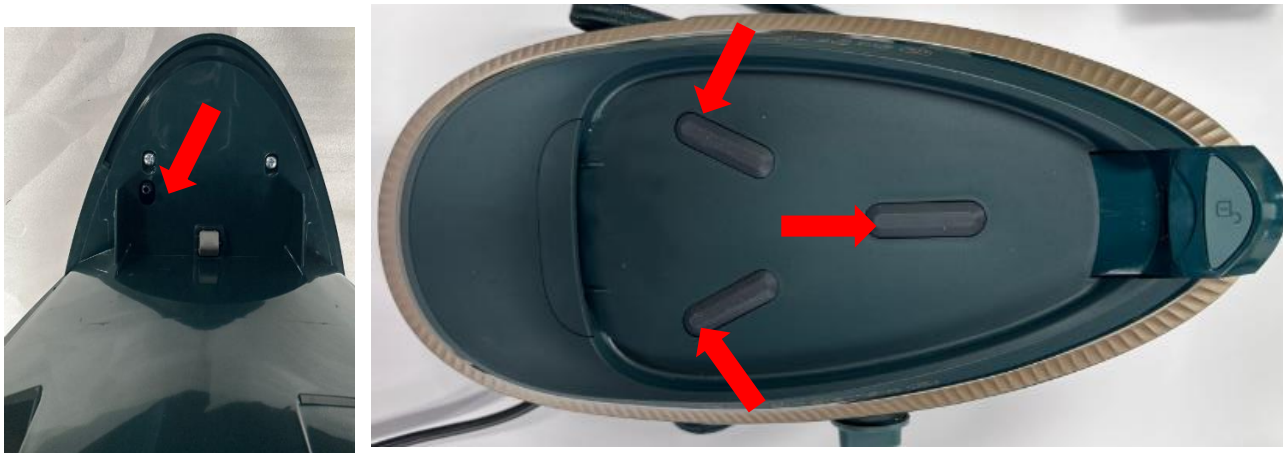
Step 1: Remove the Water Tank Assy (25) & Turn the Rinse Cap Assy anticlockwise to remove (22)



Step 2: Pull out the Rinse Bush as shown



Step 3: Lift up the Tray rubber and unscrew L (3x) to remove Tray Assy (17) as shown



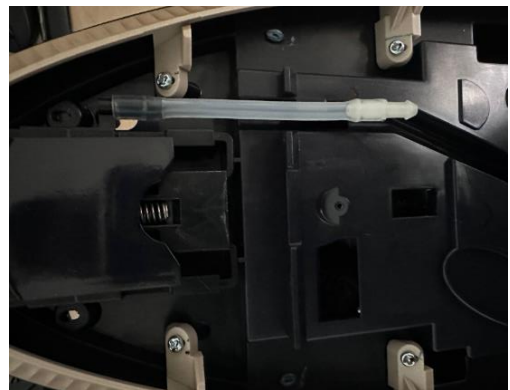
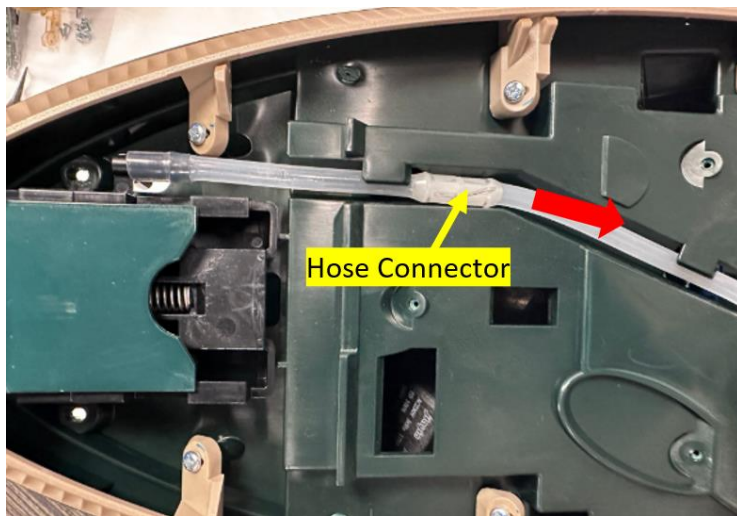
Step 4: Turn over the set and unscrew M (2x) from Stand Top Assy (13) and unscrew N (6x) from Stand Bottom Assy (3) as shown



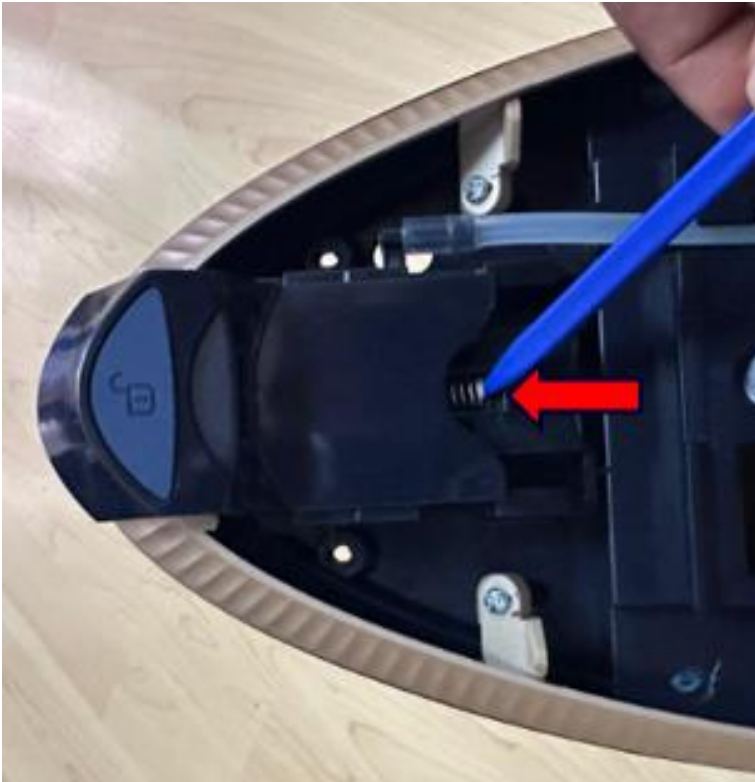
Step 5: Slide up and remove the Tray Assy (17)



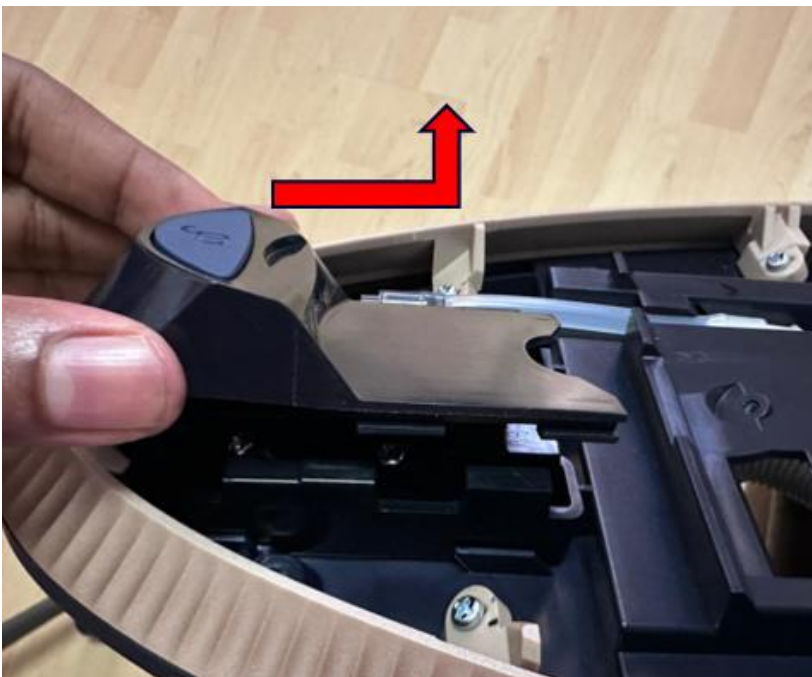
Step 6: Remove the De-air tube from the hose connector as shown



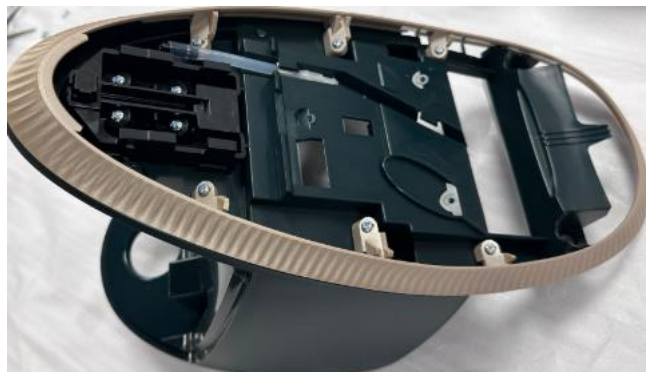
Step 7: Push the spring and take it out



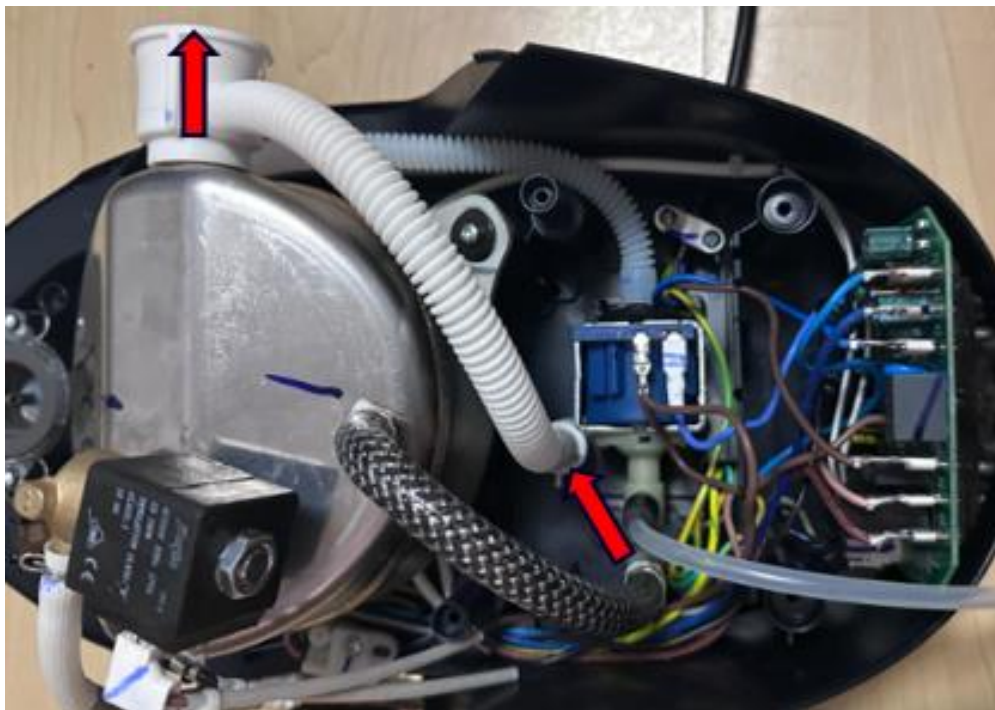
Step 8: Remove the Slider Assy (15) as shown direction



Step 9: Remove the Stand Top Assy (13) as shown



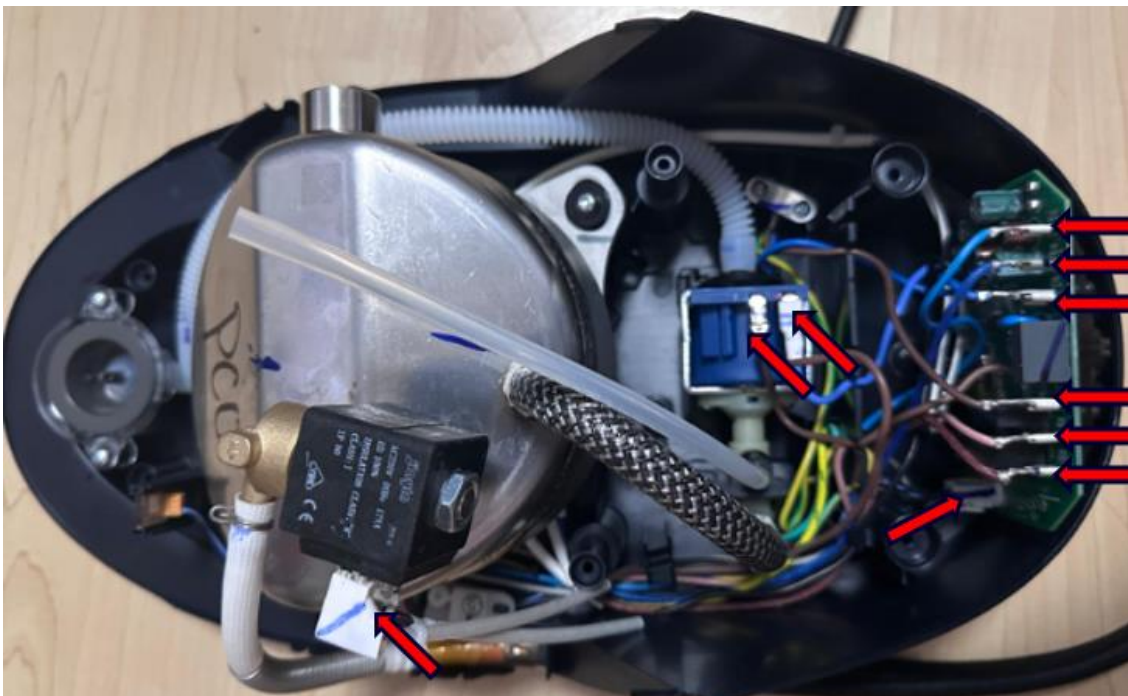
Step 10: Remove the Rinse outlet tube from Stand Bottom Assy (3) and Boiler Assy (7) as shown



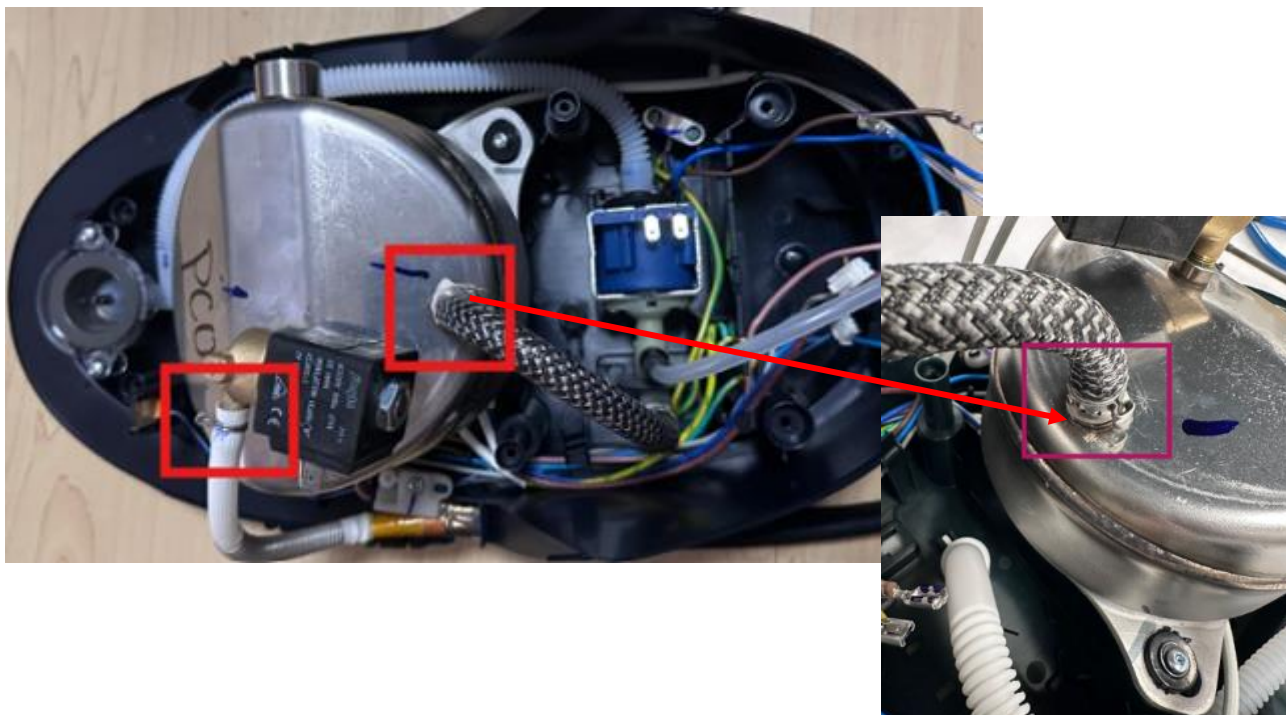
Step 11. Unscrew O (2x) Light Guide Assy (19) from Stand Bottom Assy (3) as shown



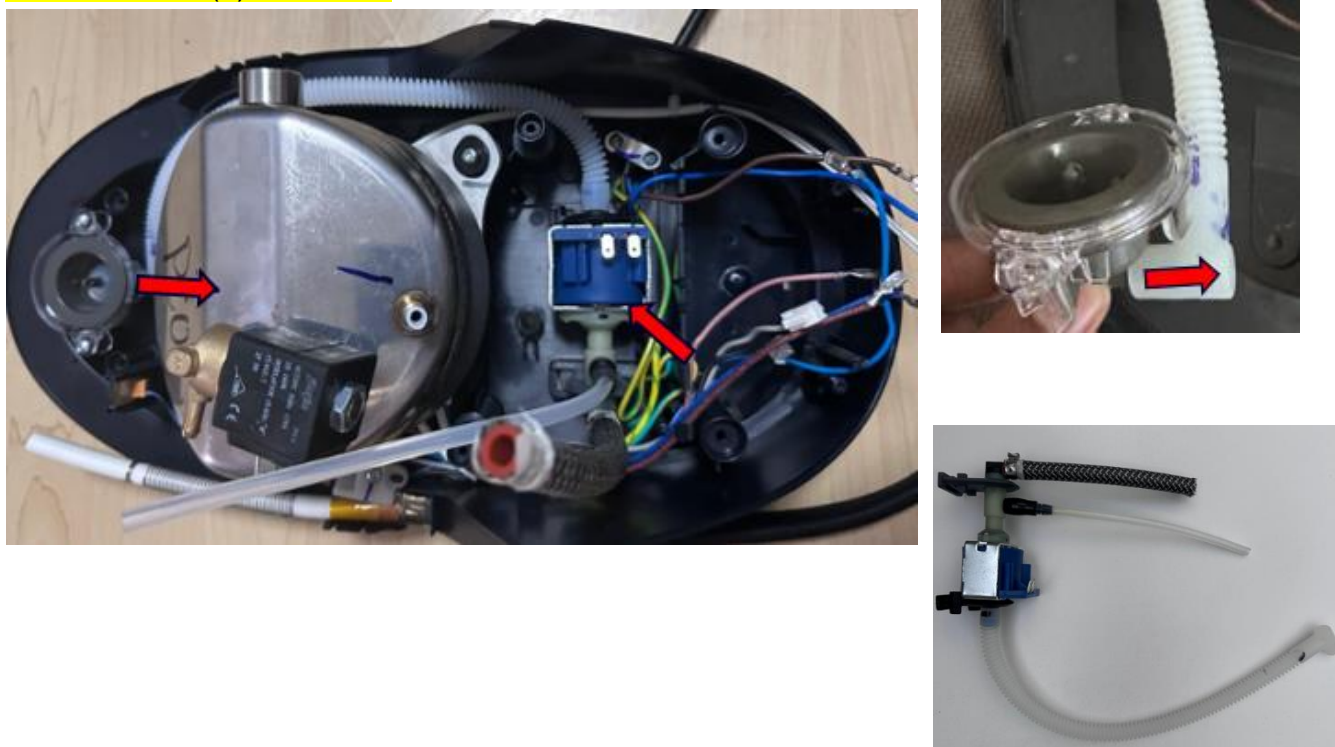
Step 12: Unplug all the quick connectors from Power PCBA (33), E-valve (110) & Pump Assy (11) as shown



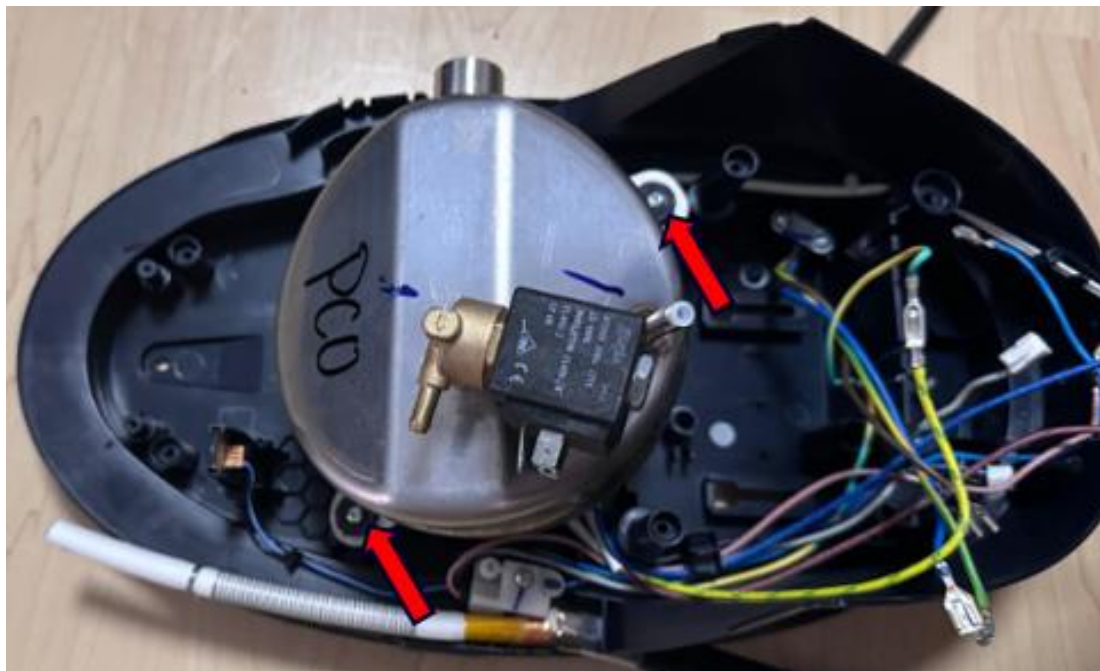
Step 13. Remove the Braided tube and Hose cord tube from Boiler Assy (7) as shown.  
**Caution: Ensure do not damage the braided tube while removing the inox clamp.**



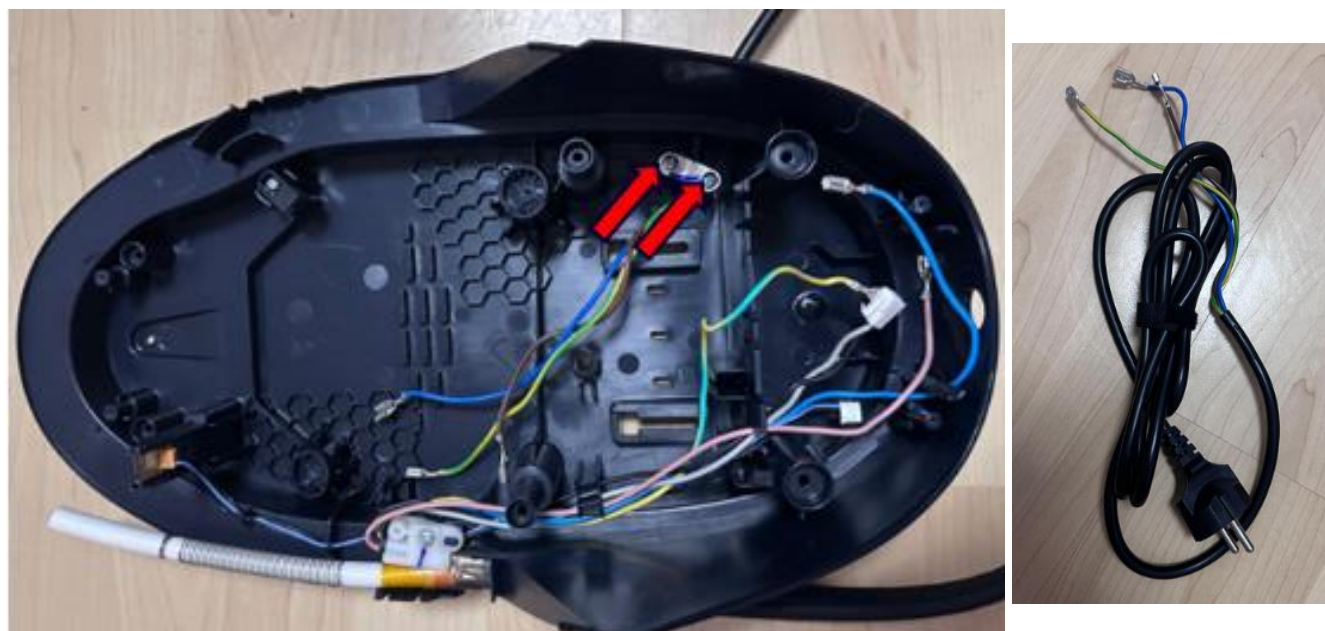
Step 14: Unplug inlet tube from water inlet coupling and Remove the Pump Assy (11) from Stand Bottom (3) as shown



Step 15. To remove Boiler Assy (7) unscrew T (2x) from Stand Bottom Assy (3) as shown



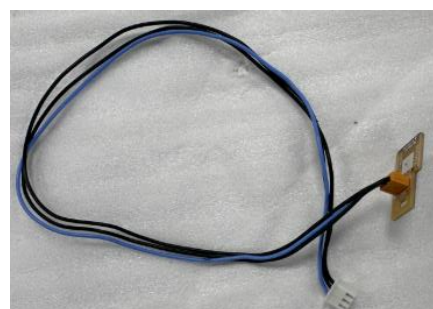
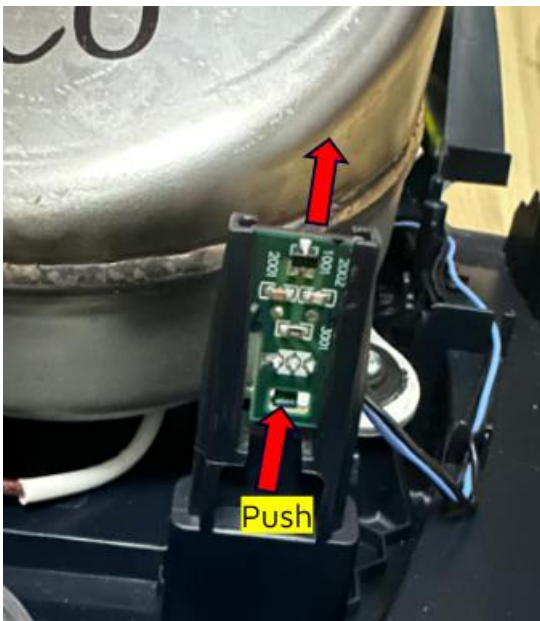
Step 16: To remove Powercord (27) unscrew Q (2x) from Stand Bottom Assy (3) as shown



Step 17: To remove Hosecord Assy (107) unscrew Q (2x) from Stand Bottom Assy (3) as shown



Step 18: Push the catch to remove the PCBA Hall sensor (26) from Stand Bottom Assy (3) as shown



### 13. Assembly Instruction other service parts (Stand Assy)

Step 1: Insert PCBA Hall sensor (26) to Stand Bottom Assy (3) and tuck in the wires as shown.

**Note:** Ensure that the PCBA Hall Sensor is securely locked in place with the stand's bottom catch.

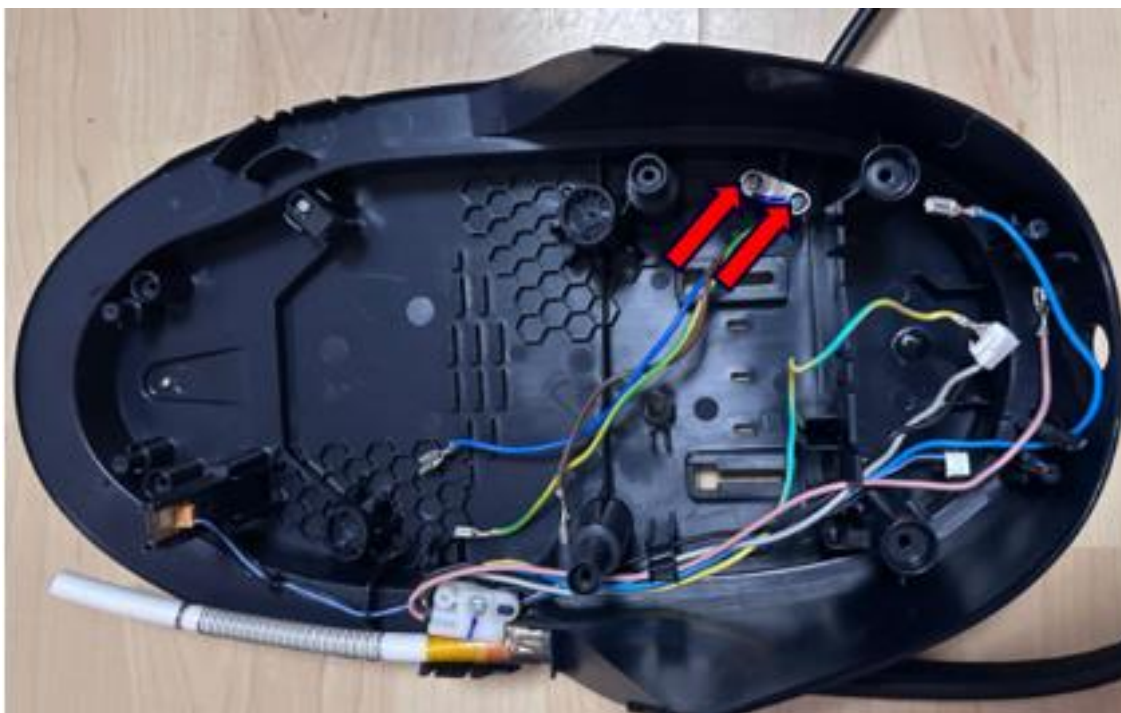


Step 2: Assemble Hosecord Assy (107) using screw R (1x) **Torque 9 ±1 Kgf.** to the Stand Bottom Assy (3) as shown

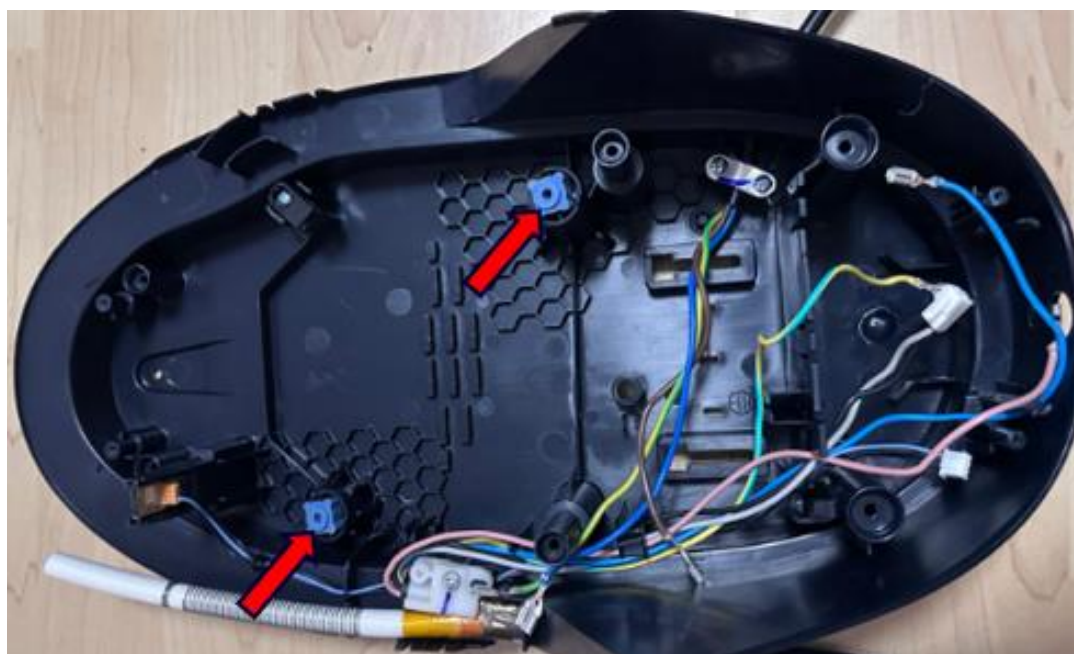
**Note:** Ensure that the Hosecord Assy wires are securely tucked inside the hook provided in the stand bottom assy.



Step 3: Assemble the Powercord (27) to Stand Bottom Assy (3) using screw Q (2x)  
**Torque 9 ±1 Kgf.** As shown.

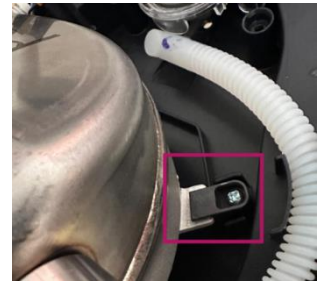
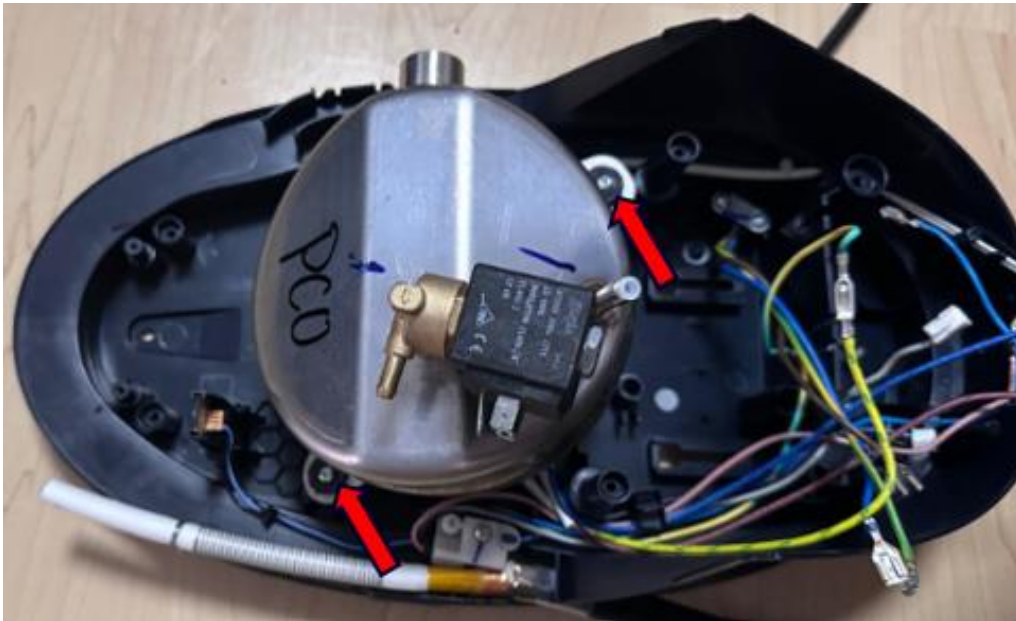


Step 4: Place the Boiler bracket (2x) to Stand Bottom Assy (3) as shown

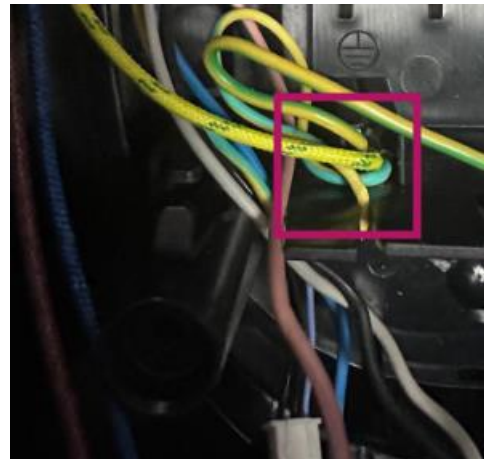
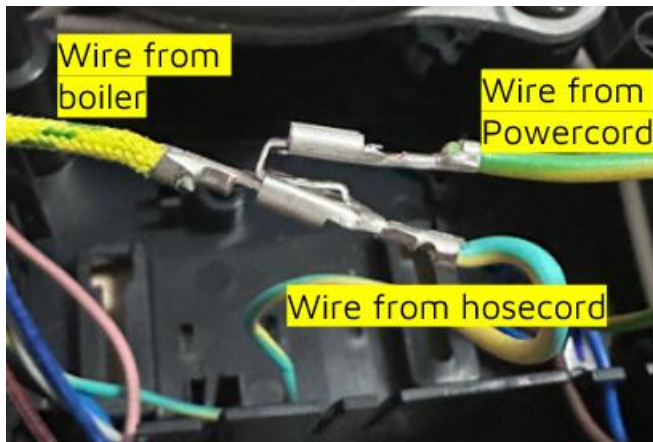


Step 5: Assemble the Boiler Assy (7) to Stand Bottom Assy (3) using screw T (2x) Torque 10 ±1 Kgf. with the plastic washer as shown.

Note: Ensure that the Boiler Assy should align with the holder on the stand bottom as shown

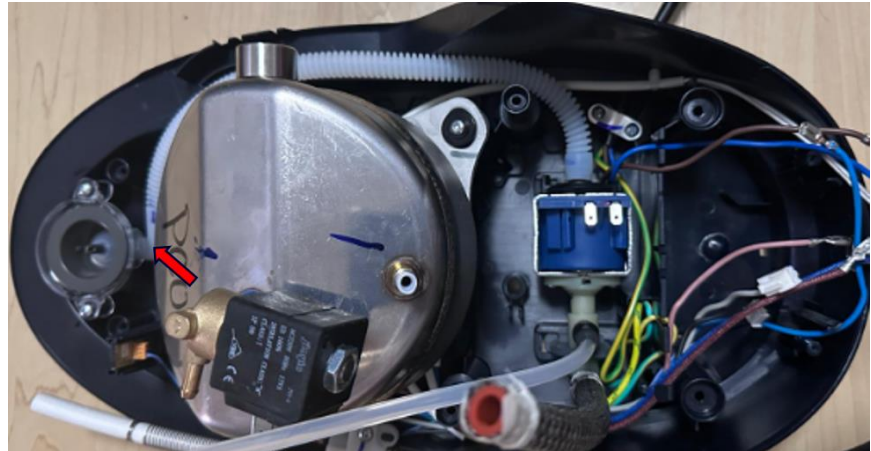
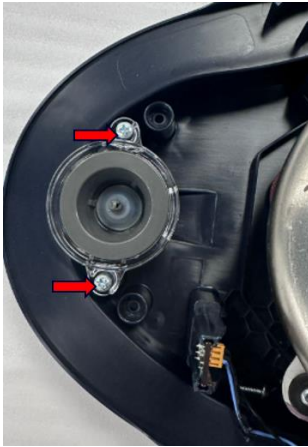


Step 6: Connect the Earth wires as shown, more detail refers wiring diagram. And insert these wires to slot provided on stand bottom assy.

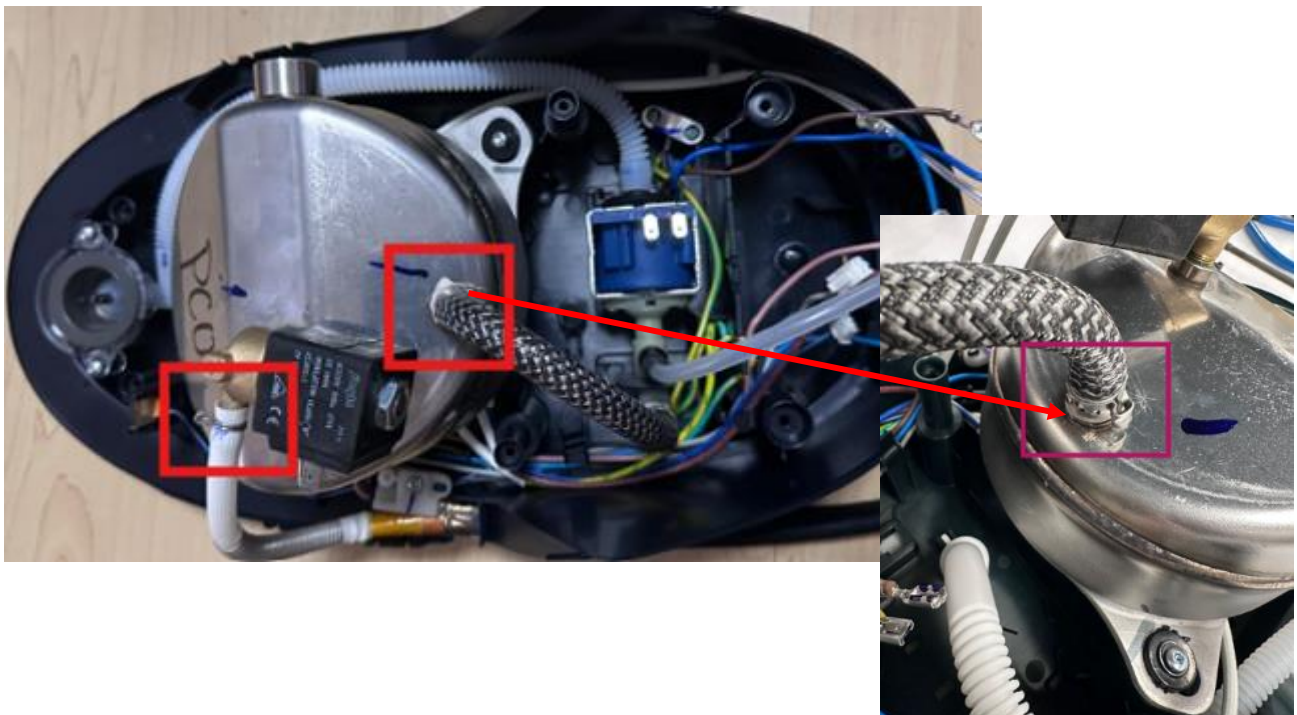


Step 7: Assemble the Water inlet coupling to the Stand Bottom Assy (3) using screw S (2x) **Torque 9 ±1 Kgf.** as shown. And assemble the Pump Assy (11) to the Stand Bottom Assy (3) then connect the pump inlet tube as shown

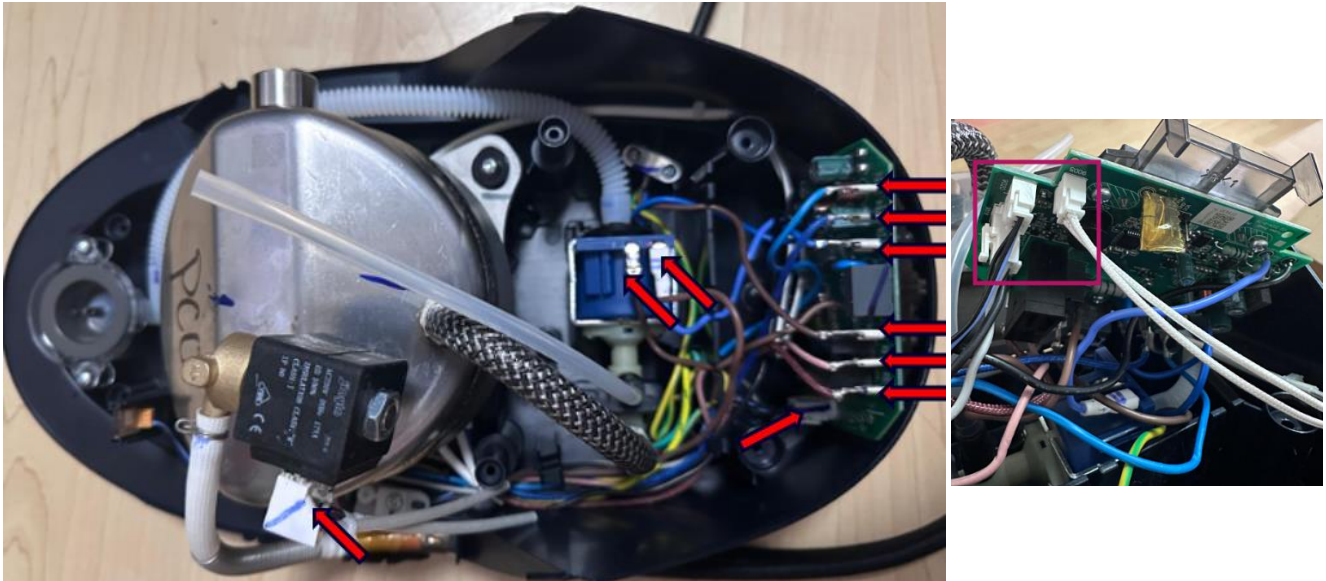
Note: Ensure the Pump Assy (11) securely mounted into the stand bottom assy.



Step 8: Connect the Braided tube and Hosecord tube to the Boiler Assy (7) To secure use Inox clamp for braided tube (Refer Page 16 for instruction) and hose clip for hosecord tube as shown.



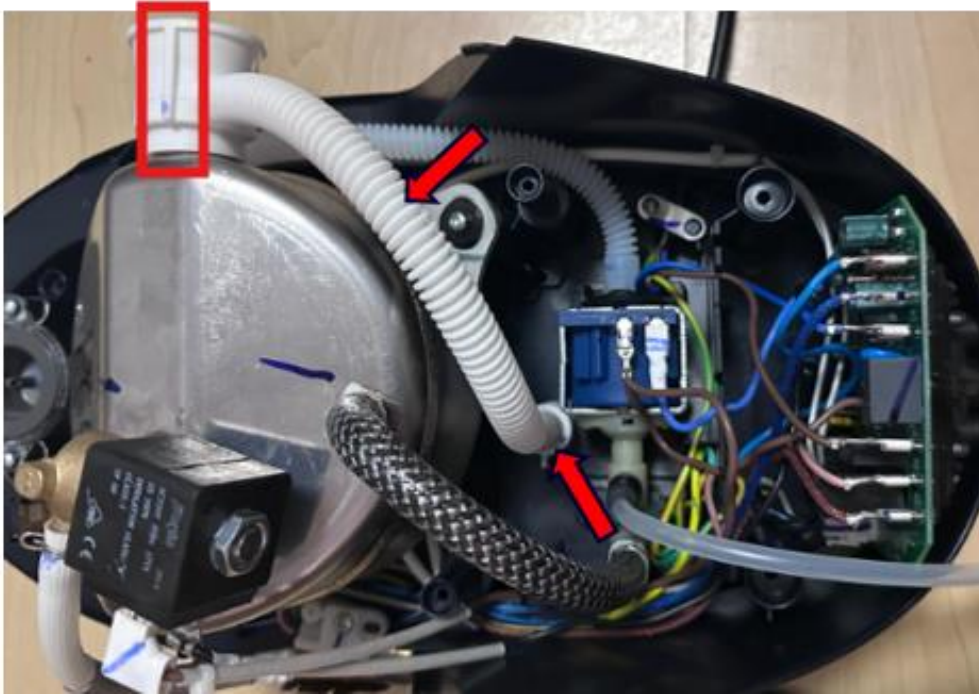
Step 9: Connect all wires to Pump Assy, Boiler Assy and Power PCBA, (Referring to the wiring diagram)



Step 10: Assemble Light Guide Assy to the Stand Bottom Assy (3) using screw O (2x)  
**Torque 5 ±1 Kgf.** as shown



Step 11. Assemble the Rinse outlet tube to Boiler Assy, ensure the rinse outlet tube orientation as shown



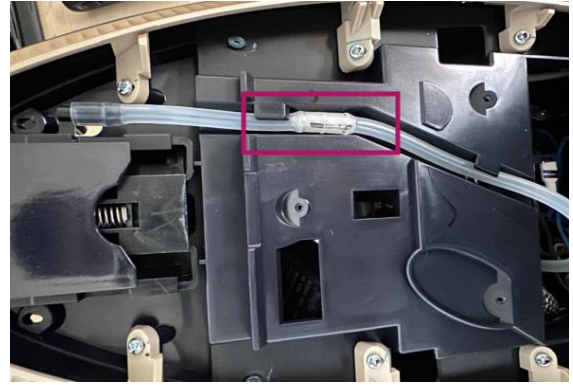
Step 12: Ensure the Rinse outlet tube rib should align with stand top assy as shown



Step 13. Assemble the Rinse bush to Stand top Assy & connect the De-air tube and tucked in to the Stand top Assy as shown



Ensure the Rinse bush groove aligns with the Rinse outlet tube as shown



Step 14: Assemble Tray Assy (17), Stand Top Assy (13) using screw L (3x) Torque  $5 \pm 1$  Kgf. as shown



Step 15: Assemble Stand Top Assy (13) with Stand Bottom Assy (3) using screw M (2x) Torque  $9 \pm 1$  Kgf. and screw N (6x) Torque  $9 \pm 1$  Kgf. as shown



Step 16. Assemble the Rinse cap Assy to the boiler by rotating it clockwise and ensuring fully tightened. Then, reinstall the water tank Assy.



## 14. Service Parts list

### 14.1 Parts list

POS	Part Description	PSG 7300/70 EU 688001003634	PSG 7300/20 EU 688001003635	PSG 7300/80 EU 688001003636	PSG 7300/80 THAI 688001003633
3	Stand Btm Assy	642001016682	642001016713	642001016751	642001016751
7	Boiler 2.0 Mtd Assy 2050W	642001017205	642001017205	642001017205	642001017205
11	Pump Assy Jiayin 3C02 230V	642001017510	642001017510	642001017510	642001017510
13	Stand Top Assy	642001016690	642001016693	642001016699	642001016699
15	Lock Slider Assy	642001016475	642001016476	642001016477	642001016477
17	Tray Assy	642001016588	642001016590	642001016591	642001016591
19	Base LGuide Assy	642001016504	642001016504	642001016504	642001016504
20	PCBA PW HE02 HV	642001022452	642001022452	642001022452	642001022452
23	Rinse Knob Assy	642001016765	642001016773	642001016774	642001016774
24	Inlet Coupling Assy	423903024481	423903024481	423903024481	423903024481
25	Inlet Coupling Seal	423901561741	423901561741	423901561741	423901561741
26	WTA Prtd Assy	642001016518	642001016518	642001016518	642001016518
27	PCBA HALL HLE01 HLV	642001015453	642001015453	642001015453	642001015453
28	3G 1.0 1.65m PVC	642001017071	642001017071	642001017071	642001018945
100	SP Mtd Assy	642001017304	642001017304	642001017304	642001017304
101	Iron Btm Cover	642001016274	642001016255	642001016256	642001016256
102	Housing Prtd	642001016259	642001017199	642001017200	642001017200
104	Inlay HE Assy	642001016432	642001016463	642001016464	642001016464
105	Trigger	642001016453	642001016453	642001016453	642001016453
107	Hosecord Assy	642001017006	642001017007	642001017054	642001017054
109	PCBA MOD IR MEMS	642001015437	642001015437	642001015437	642001015437
110	EV Jiayin JYZ-5G04/7bar	642001017224	642001017224	642001017224	642001017224
111	Inox Clamp 109	423901015791	423901015791	423901015791	423901015791
112	Inox Clamp	423901010261	423901010261	423901010261	423901010261

POS	Part Description	PSG 7300/20 UK 688001003623	PSG 7300/26 MEA 688001003661	PSG 7300/20 SG 688001003668	PSG 7300/80 UK 688001003631
3	Stand Btm Assy	642001016713	642001016713	642001016713	642001016751
7	Boiler 2.0 Mtd Assy 2050W	642001017205	642001017205	642001017205	642001017205
11	Pump Assy Jiayin 3C02 230V	642001017510	642001017510	642001017510	642001017510
13	Stand Top Assy	642001016693	642001016693	642001016693	642001016699
15	Lock Slider Assy	642001016476	642001016476	642001016476	642001016477
17	Tray Assy	642001016590	642001016590	642001016590	642001016591
19	Base LGuide Assy	642001016504	642001016504	642001016504	642001016504
20	PCBA PW HE02 HV	642001022452	642001022452	642001022452	642001022452
23	Rinse Knob Assy	642001016773	642001016773	642001016773	642001016774
24	Inlet Coupling Assy	423903024481	423903024481	423903024481	423903024481
25	Inlet Coupling Seal	423901561741	423901561741	423901561741	423901561741
26	WTA Prtd Assy	642001016518	642001016518	642001016518	642001016518
27	PCBA HALL HLE01 HLV	642001015453	642001015453	642001015453	642001015453
28	3G 1.0 1.65m PVC	642001018946	642001018946	642001018946	642001018946
100	SP Mtd Assy	642001017304	642001017304	642001017304	642001017304
101	Iron Btm Cover	642001016255	642001016255	642001016255	642001016256
102	Housing Prtd	642001017199	642001017199	642001017199	642001017200
104	Inlay HE Assy	642001016463	642001016463	642001016463	642001016464
105	Trigger	642001016453	642001016453	642001016453	642001016453
107	Hosecord Assy	642001017007	642001017007	642001017007	642001017054
109	PCBA MOD IR MEMS	642001015437	642001015437	642001015437	642001015437
110	EV Jiayin JYZ-5G04/7bar	642001017224	642001017224	642001017224	642001017224
111	Inox Clamp 109	423901015791	423901015791	423901015791	423901015791
112	Inox Clamp	423901010261	423901010261	423901010261	423901010261

<b>POS</b>	<b>Part Description</b>	<b>PSG 7300/20 SG 688001003624</b>
3	Stand Btm Assy	642001016713
7	Boiler 2.0 Mtd Assy 2050W	642001017205
11	Pump Assy Jiayin 3C02 230V	642001017510
13	Stand Top Assy	642001016693
15	Lock Slider Assy	642001016476
17	Tray Assy	642001016590
19	Base LGuide Assy	642001016504
20	PCBA PW HE02 HV	642001022452
23	Rinse Knob Assy	642001016773
24	Inlet Coupling Assy	423903024481
25	Inlet Coupling Seal	423901561741
26	WTA Prtd Assy	642001016518
27	PCBA HALL HLE01 HLV	642001015453
28	3G 1.0 1.65m PVC	642001017071
100	SP Mtd Assy	642001017304
101	Iron Btm Cover	642001016255
102	Housing Prtd	642001017199
104	Inlay HE Assy	642001016463
105	Trigger	642001016453
107	Hosecord Assy	642001017007
109	PCBA MOD IR MEMS	642001015437
110	EV Jiayin JYZ-5G04/7bar	642001017224
111	Inox Clamp 109	423901015791
112	Inox Clamp	423901010261

## 14.2 Consumer Replaceable Part

<b>Pos</b>	<b>Service 12NCs</b>	<b>Part Description</b>	<b>CRP Numbers</b>
23	642001016765	Rinse Knob Assy	CPxxxxx
23	642001016773	Rinse Knob Assy	CPxxxxx
23	642001016774	Rinse Knob Assy	CPxxxxx
26	642001016518	WTA Prtd Assy	CPxxxxx

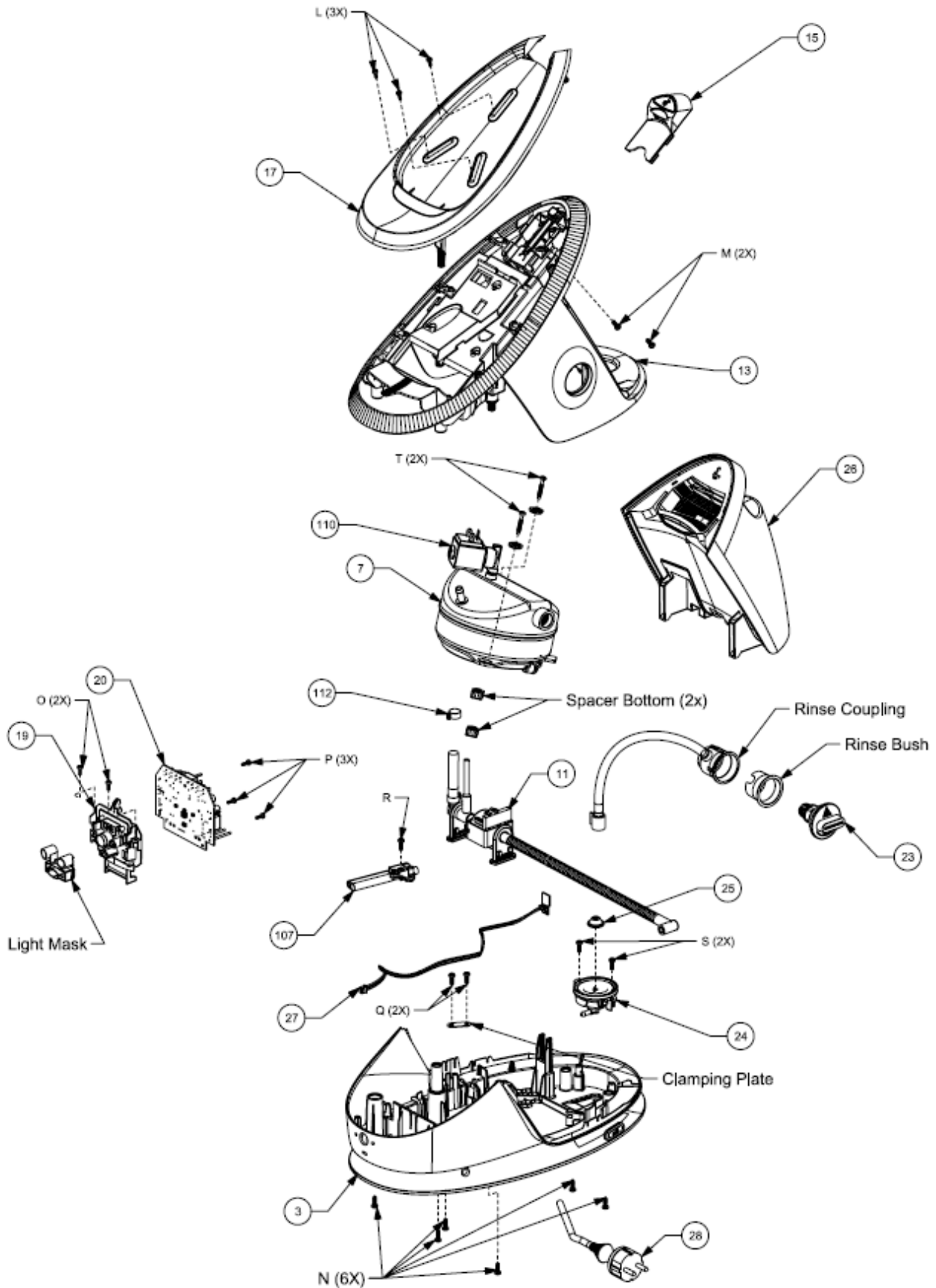
### Notes:

The above mentioned CRP is applicable for following country only:-

Germany, Austria, Netherlands, Belgium, France, Italy, Spain, UK, Denmark, Sweden, Poland, Czech Republic, Hungary & Romania



## 14.4 Exploded View Stand (HE)



## 15. Revision History

<b>Version</b>	<b>Change Details</b>	<b>Author</b>	<b>Date</b>
1	Initial release	Kothan	10/1/2025